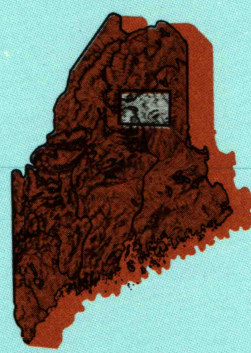


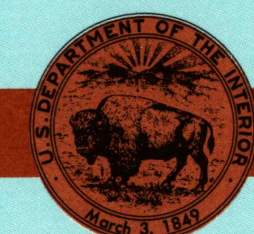
Oakfield
MAINE

1:100 000-scale metric
topographic map



30 X 60 MINUTE QUADRANGLE
SHOWING

- Contours and elevations in meters
- Highways, roads and other manmade structures
- Water features
- Woodland areas
- Geographic names



U. S. GEOLOGICAL SURVEY

1994

Produced by the United States Geological Survey

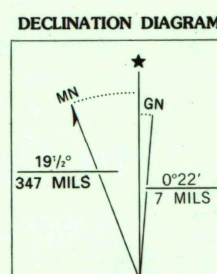
Compiled from USGS 1:62 500-scale topographic maps dated 1940-1965. Planimetry revised from aerial photographs taken 1992 and other source data. Revised information not field checked. Map edited 1994. 1927 North American Datum (NAD 27). Projection and 10 000-meter grid: Universal Transverse Mercator, zone 19. 25 000-foot ticks: Maine coordinate system, east zone. The difference between NAD 27 and North American Datum of 1983 (NAD 83) is too small to show at this scale. The values of the shift between the datums for 7.5-minute intersections are given in USGS Bulletin 1875. There may be private inholdings within the boundaries of the National or State reservations shown on this map.

CONTOUR INTERVAL 10 METERS
NATIONAL GEODETIC VERTICAL DATUM OF 1929
ELEVATIONS SHOWN TO THE NEAREST METER

THIS MAP COMPLIES WITH NATIONAL MAP ACCURACY STANDARDS

CONVERSION TABLE	
Meters	Feet
2	6.5617
3	9.8425
4	13.1234
5	16.4042
6	19.6850
7	22.9659
8	26.2467
9	29.5276
10	32.8084

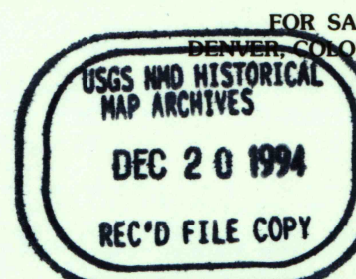
To convert meters to feet
multiply by 3.2808
To convert feet to meters
multiply by 0.3048



UTM grid convergence
(GN and 1984 magnetic
declination (MN)
at center of map
Diagram is approximate

ADJOINING MAPS		
1	2	3
4	5	6
7	8	

1 Clifton Lake
2 Presque Isle
3 Fort Fairfield
4 Chamberlain Lake
5 Houlton
6 Moosehead Lake
7 Millinocket
8 Danforth



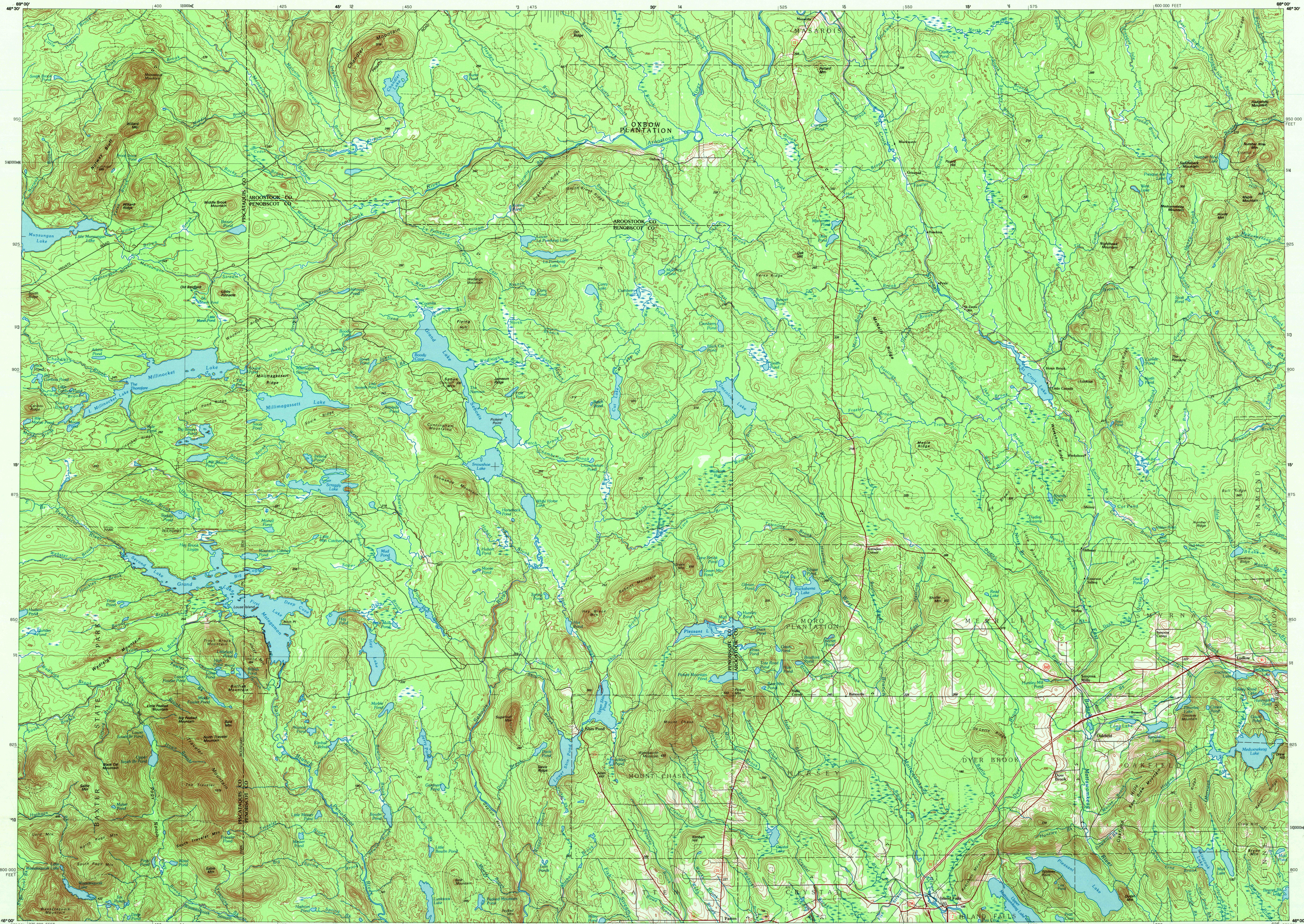
Topographic Map Symbols

- Primary highway, hard surface
Secondary highway, hard surface
Light duty road, principal street, hard or improved surface
Other road or street; trail
Route marker: Interstate, U.S., State
Railroad: standard gauge; narrow gauge
Bridge: overpass; underpass
Tunnel: road; railroad
Built up area; locality; elevation
Airport; landing field; landing strip
National boundary
State boundary
County boundary
Civil township boundary
National or State reservation boundary
Land grant boundary
U.S. public lands survey: range, township, section
Range, township, section line: protracted
Power transmission line: pipeline
Dam; dam with lock
Cemetery; building
Windmill; water well; spring
Mine shaft; adit or cave; mine, quarry; gravel pit
Campground; picnic area; U.S. location monument
Ruins; cliff dwelling
Disturbed surface: strip mine, lava, sand
Contours: index, intermediate, supplementary
Bathymetric contours: index, intermediate
Stream, lake; perennial; intermittent
Rapids, large and small; falls, large and small
Area to be submerged; marsh, swamp
Land subject to controlled inundation; woodland
Scrub; mangrove
Orchard; vineyard

A pamphlet describing topographic maps is available on request

OAKFIELD, MAINE
46068-A1-TM-100

1994



1:100 000
SCALE 1:100 000
CONTOUR INTERVAL 10 METERS

SCALE 1:100 000

CONTOUR INTERVAL 10 METERS