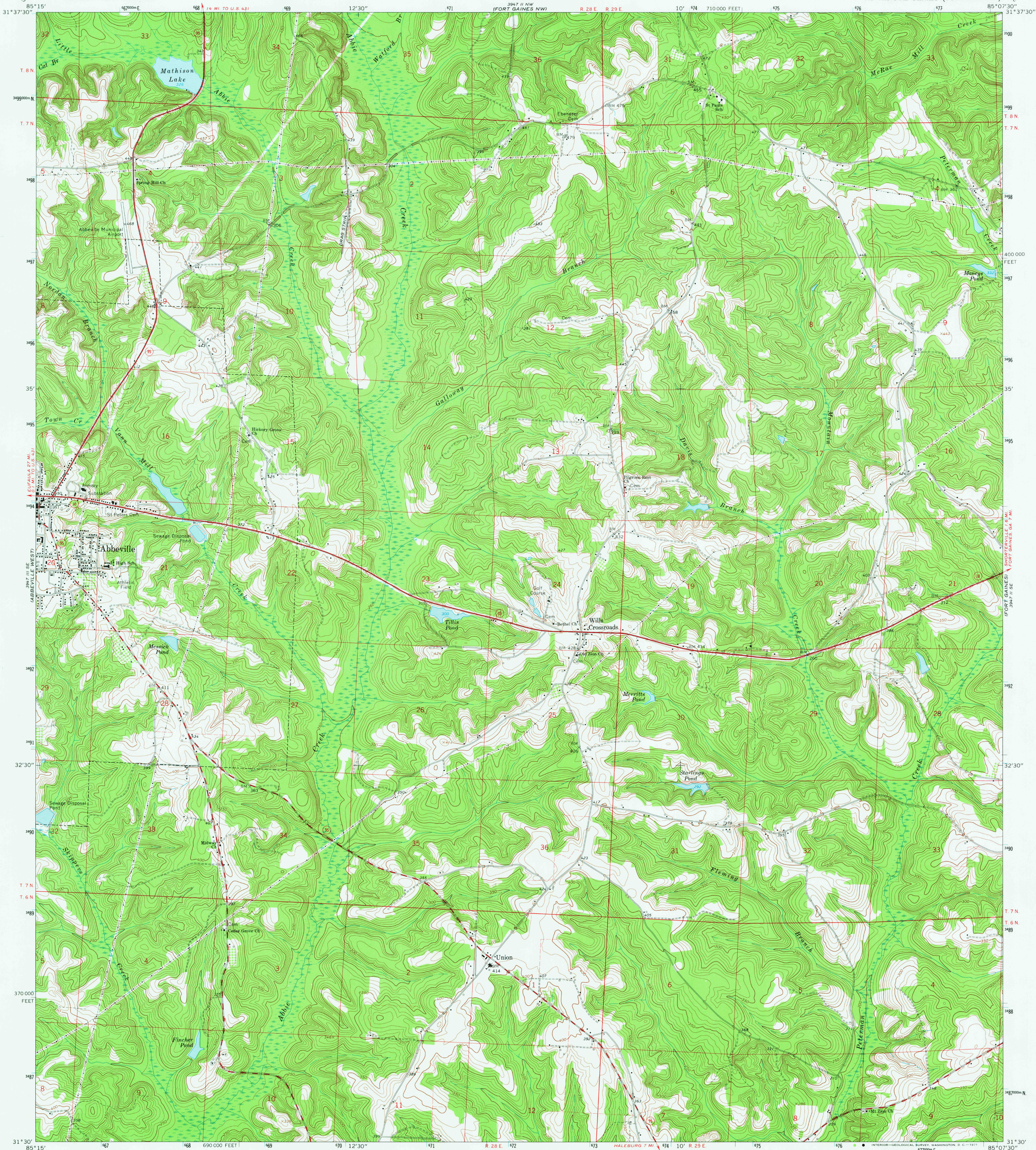


3947 II SE  
(LAWRENCEVILLE)

3947 II SE  
(FORT GAINES NW)

UNITED STATES  
DEPARTMENT OF THE INTERIOR  
GEOLOGICAL SURVEY

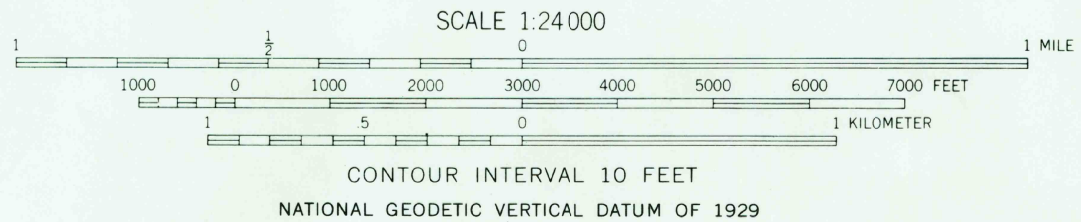
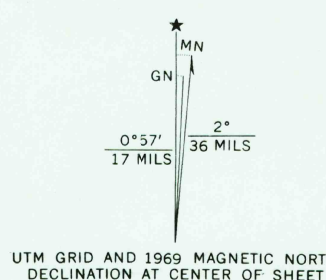
ABBEVILLE EAST QUADRANGLE  
ALABAMA—HENRY CO.  
7.5 MINUTE SERIES (TOPOGRAPHIC)



3947 II SE  
(NEWVILLE)

3947 II SE  
(FORT GAINES NW)

Mapped, edited, and published by the Geological Survey  
Control by USGS, USC&GS, and USCE  
Topography by photogrammetric methods from aerial photographs  
taken 1965 Field checked 1969  
Polyconic projection. 1927 North American datum  
10,000-foot grid based on Alabama coordinate system, east zone  
1000-meter Universal Transverse Mercator grid ticks,  
zone 16, shown in blue  
Fine red dashed lines indicate selected fence and field lines where  
generally visible on aerial photographs. This information is unchecked  
Map photinspected 1979  
No major culture or drainage changes observed



ROAD CLASSIFICATION  
Primary highway, all weather, hard surface  
Secondary highway, all weather, hard surface  
Light-duty road, all weather, improved surface  
Unimproved road, fair or poor, weather  
State Route

ABBEVILLE EAST, ALA.  
N 3130—W 8507.5/7.5

1969  
PHOTOINSPECTED 1979  
AMS 3947 II SW—SERIES V844

THIS MAP COMPLIES WITH NATIONAL MAP ACCURACY STANDARDS  
FOR SALE BY U. S. GEOLOGICAL SURVEY, RESTON, VIRGINIA 22092  
A FOLDER DESCRIBING TOPOGRAPHIC MAPS AND SYMBOLS IS AVAILABLE ON REQUEST

FEB 2 1983  
1300