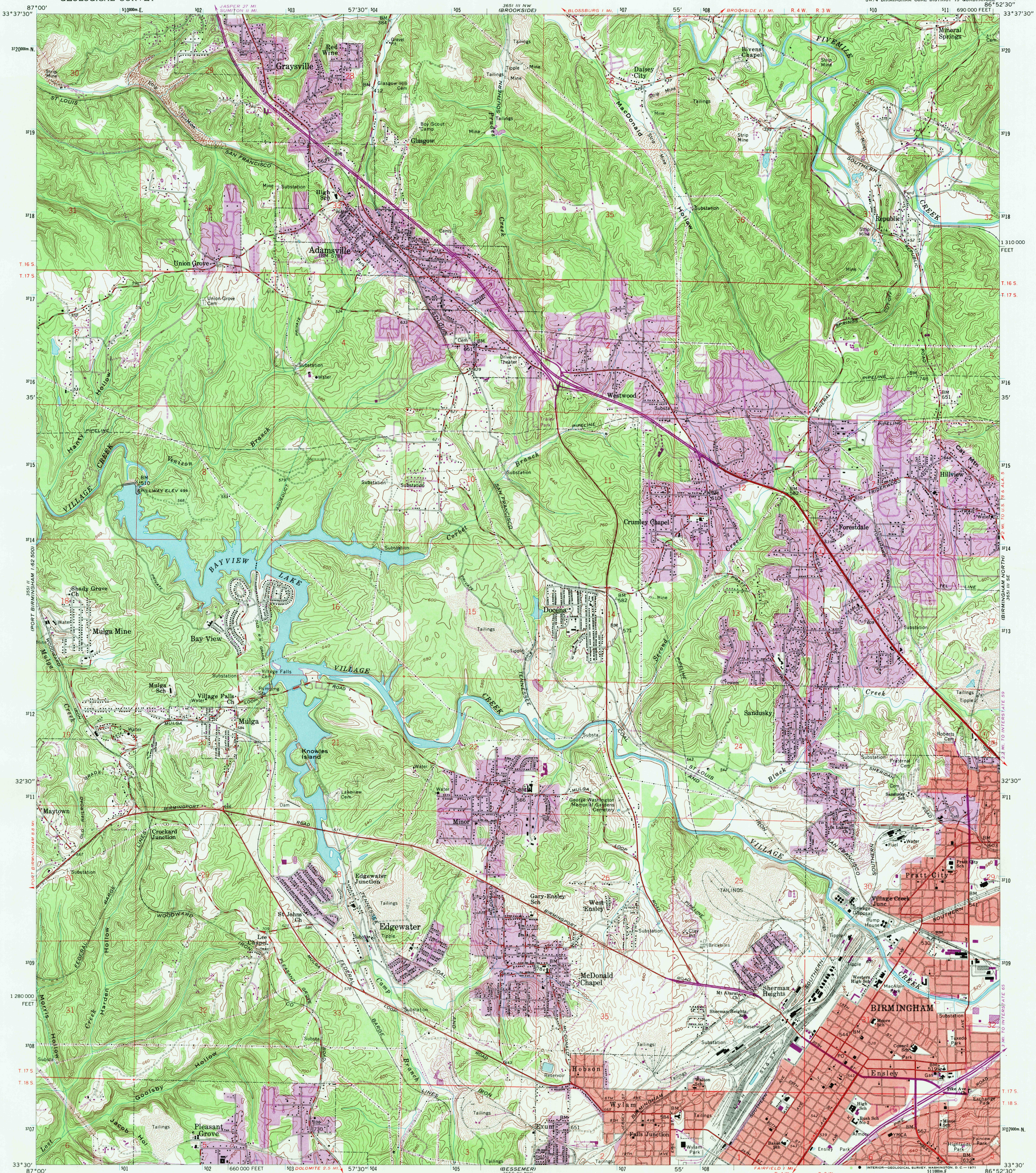
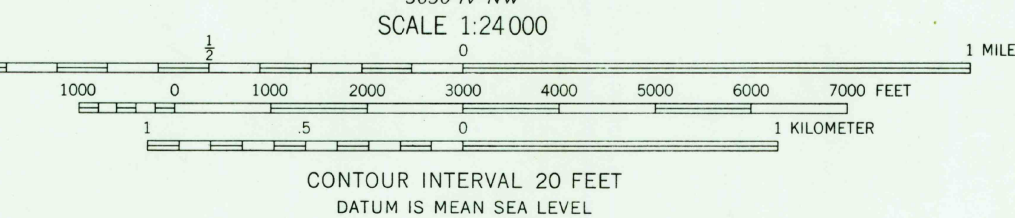
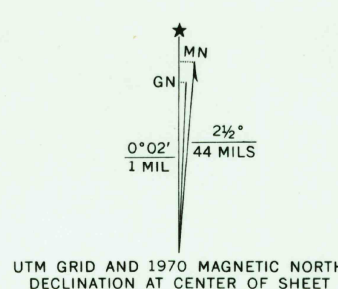


UNITED STATES
DEPARTMENT OF THE INTERIOR
GEOLOGICAL SURVEY

ADAMSVILLE QUADRANGLE
ALABAMA—JEFFERSON CO.
7.5 MINUTE SERIES (TOPOGRAPHIC)
SW/4 BIRMINGHAM COAL DISTRICT 15' QUADRANGLE



Maped, edited, and published by the Geological Survey
Control by USGS, USC&GS, USCE, and Alabama Geodetic Survey
Topography from aerial photographs by photogrammetric methods
Aerial photographs taken 1957. Field check 1959
Polyconic projection. 1927 North American datum
10,000-foot grid based on Alabama coordinate system, west zone
1000-meter Universal Transverse Mercator grid ticks,
zone 16, shown in blue
Red tint indicates areas in which only
landmark buildings are shown
Revisions shown in purple compiled from aerial photographs
taken 1970. This information not field checked
Purple tint indicates extension of urban areas



THIS MAP COMPLIES WITH NATIONAL MAP ACCURACY STANDARDS
FOR SALE BY U. S. GEOLOGICAL SURVEY, WASHINGTON, D. C. 20542
A FOLDER DESCRIBING TOPOGRAPHIC MAPS AND SYMBOLS IS AVAILABLE ON REQUEST



ROAD CLASSIFICATION
Heavy-duty ——— Light-duty ———
Medium-duty ——— Unimproved dirt ———
Interstate Route U. S. Route State Route
ADAMSVILLE, ALA.
SW/4 BIRMINGHAM COAL DISTRICT 15' QUADRANGLE
N3330—W8652.5/7.5
1959
PHOTOREVISED 1970
AMS 3651 III SW—SERIES V884