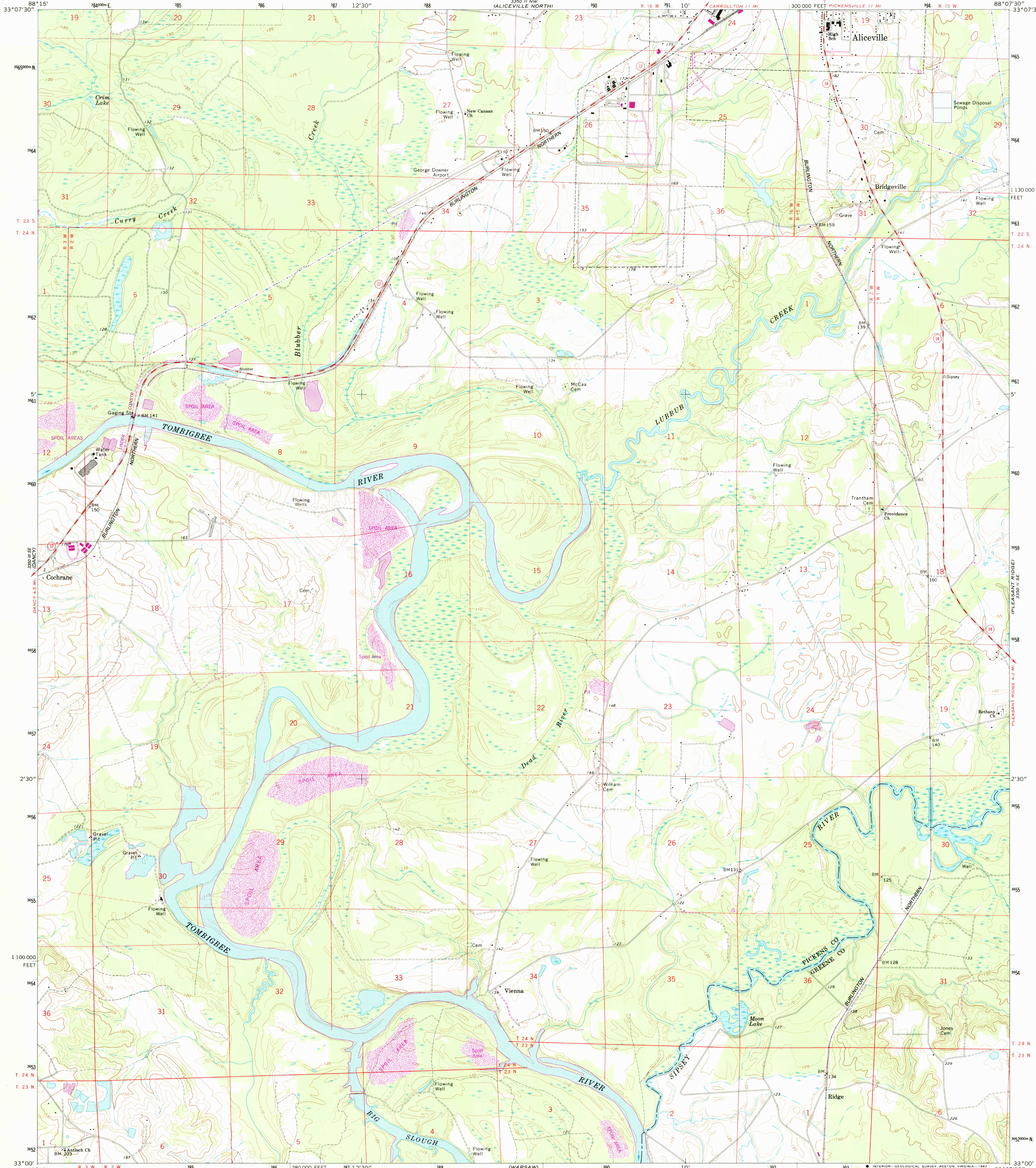


PICKENSVILLE
33°07'30" N
88°15' W

UNITED STATES
DEPARTMENT OF THE INTERIOR
GEOLOGICAL SURVEY

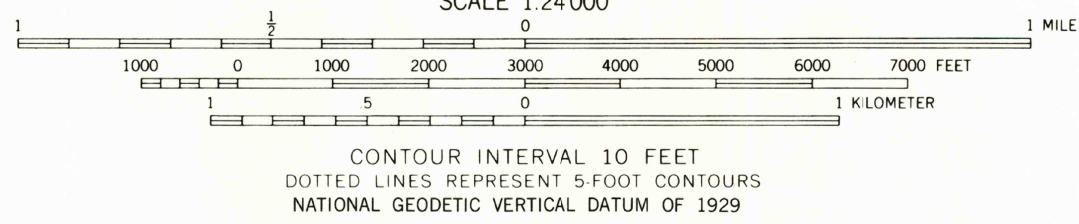
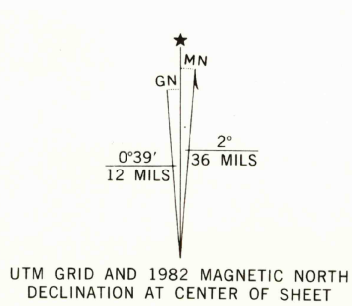
ALICEVILLE SOUTH QUADRANGLE
ALABAMA
7.5 MINUTE SERIES (TOPOGRAPHIC)

33°07'30" N
88°07'30" W
CUNNINGHAM



PANOLA
33°00' N
88°15' W

Mapped, edited, and published by the Geological Survey
Control by USGS, USC&GS, and USCE
Topography by photogrammetric methods from aerial photographs
taken 1964 and 1971. Field checked 1970
Polyconic projection. 1927 North American datum
10,000-foot grid based on Alabama coordinate system, west zone
1000-meter Universal Transverse Mercator grid ticks,
zone 16, shown in blue
Fine red dashed lines indicate selected fence and field lines where
generally visible on aerial photographs. This information is unchecked
To place on the predicted North American Datum 1983
move the projection lines 11 meters south and
2 meters east as shown by dashed corner ticks
Revisions shown in purple compiled from aerial photographs taken 1981
and other sources. This information not field checked. Map edited 1982



THIS MAP COMPLIES WITH NATIONAL MAP ACCURACY STANDARDS
FOR SALE BY U. S. GEOLOGICAL SURVEY, RESTON, VIRGINIA 22092
A FOLDER DESCRIBING TOPOGRAPHIC MAPS AND SYMBOLS IS AVAILABLE ON REQUEST



ROAD CLASSIFICATION
Primary highway, hard surface
Secondary highway, hard surface
Light-duty road, hard or improved surface
Unimproved road
Interstate Route
U. S. Route
State Route

RETURN TO:
USGS NATIONAL MAP ARCHIVES
RESTON, VA-22092

ALICEVILLE SOUTH, ALA.
N3300-W8807.5/7.5
1970
PHOTOREVISED 1982
DMA 3350 II SW-SERIES V844

WEST GREENE
33°00' N
88°15' W