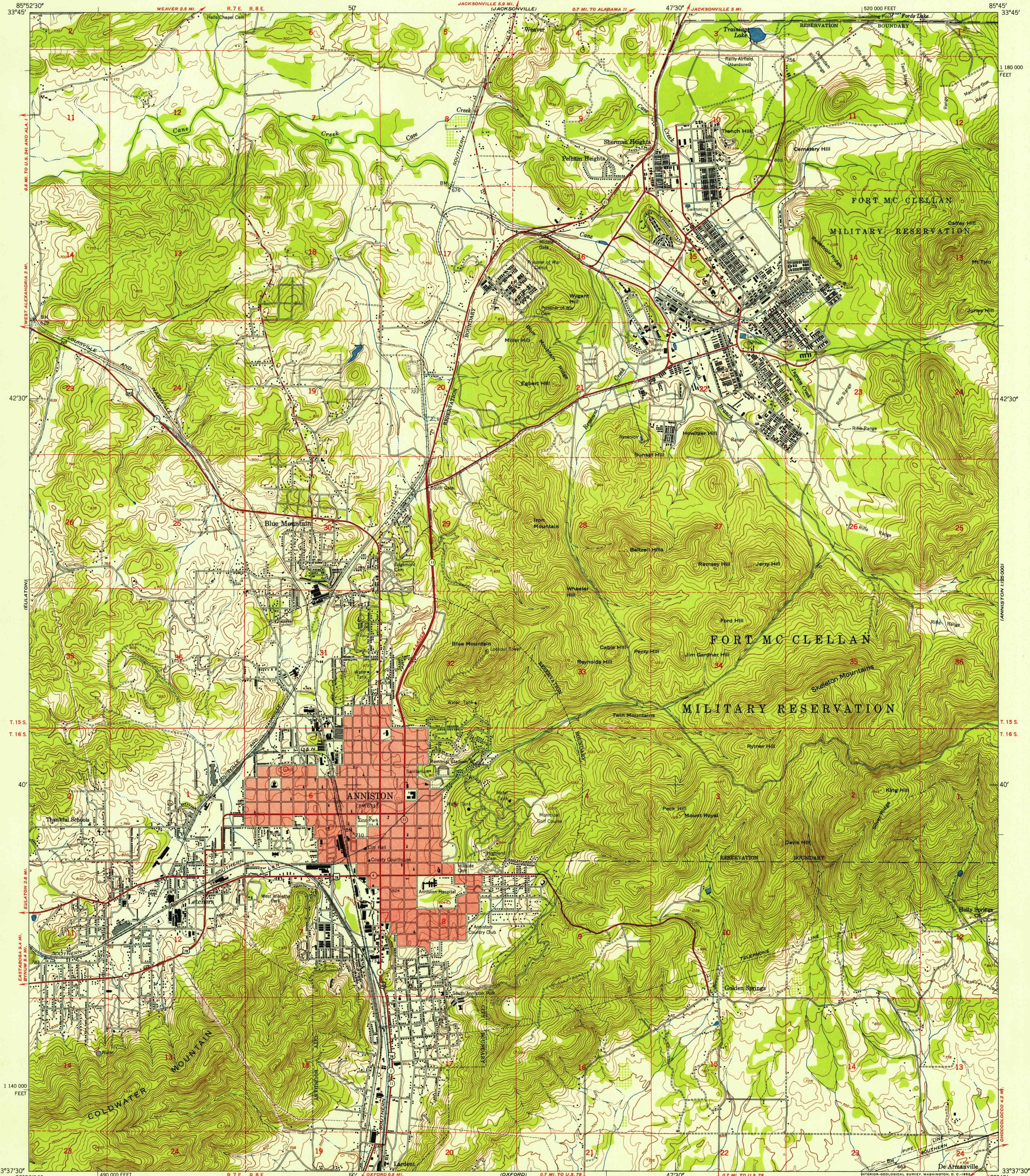


UNITED STATES
DEPARTMENT OF THE INTERIOR
GEOLOGICAL SURVEY

UNITED STATES
DEPARTMENT OF THE ARMY
CORPS OF ENGINEERS

U.S.G.S.
FILE COPY
Inspection and Editing

ANNISTON QUADRANGLE
ALABAMA-CALHOUN CO.
7.5 MINUTE SERIES (TOPOGRAPHIC)
NE/4 ANNISTON 15' QUADRANGLE



Map by the Army Map Service
Published for civil use by the Geological Survey
Control by USGS, USC&GS, and USCE
Topography from aerial photographs by multiplex methods
Aerial photographs taken 1946. Field check 1947
Polyconic projection, 1927 North American datum
10,000-foot grid based on Alabama coordinate system,
east zone
No distinction is made between barns, dwellings,
commercial and industrial buildings
Red tint indicates area in which only
landmark buildings are shown
Unchecked elevations are shown in brown
Dashed land lines indicate approximate locations

TRUE NORTH
MAGNETIC NORTH
APPROXIMATE MEAN
DECLINATION, 1947

SCALE 1:24,000
1 0 1000 2000 3000 4000 5000 6000 7000 FEET
1 5 0 1 KILOMETER
CONTOUR INTERVAL 20 FEET
DATUM IS MEAN SEA LEVEL

THIS MAP COMPLIES WITH NATIONAL MAP ACCURACY STANDARDS
FOR SALE BY U.S. GEOLOGICAL SURVEY, WASHINGTON 25, D.C.
A FOLDER DESCRIBING TOPOGRAPHIC MAPS AND SYMBOLS IS AVAILABLE ON REQUEST



ROAD CLASSIFICATION
Heavy-duty 4 LANE IS LANE Light-duty
Medium-duty 4 LANE IS LANE Unimproved dirt
U.S. Route State Route

U.S.G.S.
FILE COPY
Inspection and Editing

ANNISTON, ALA.
NE/4 ANNISTON 15' QUADRANGLE
N3337.5-W8545/7.5

1947

HISTORICAL

SEP 9 1953