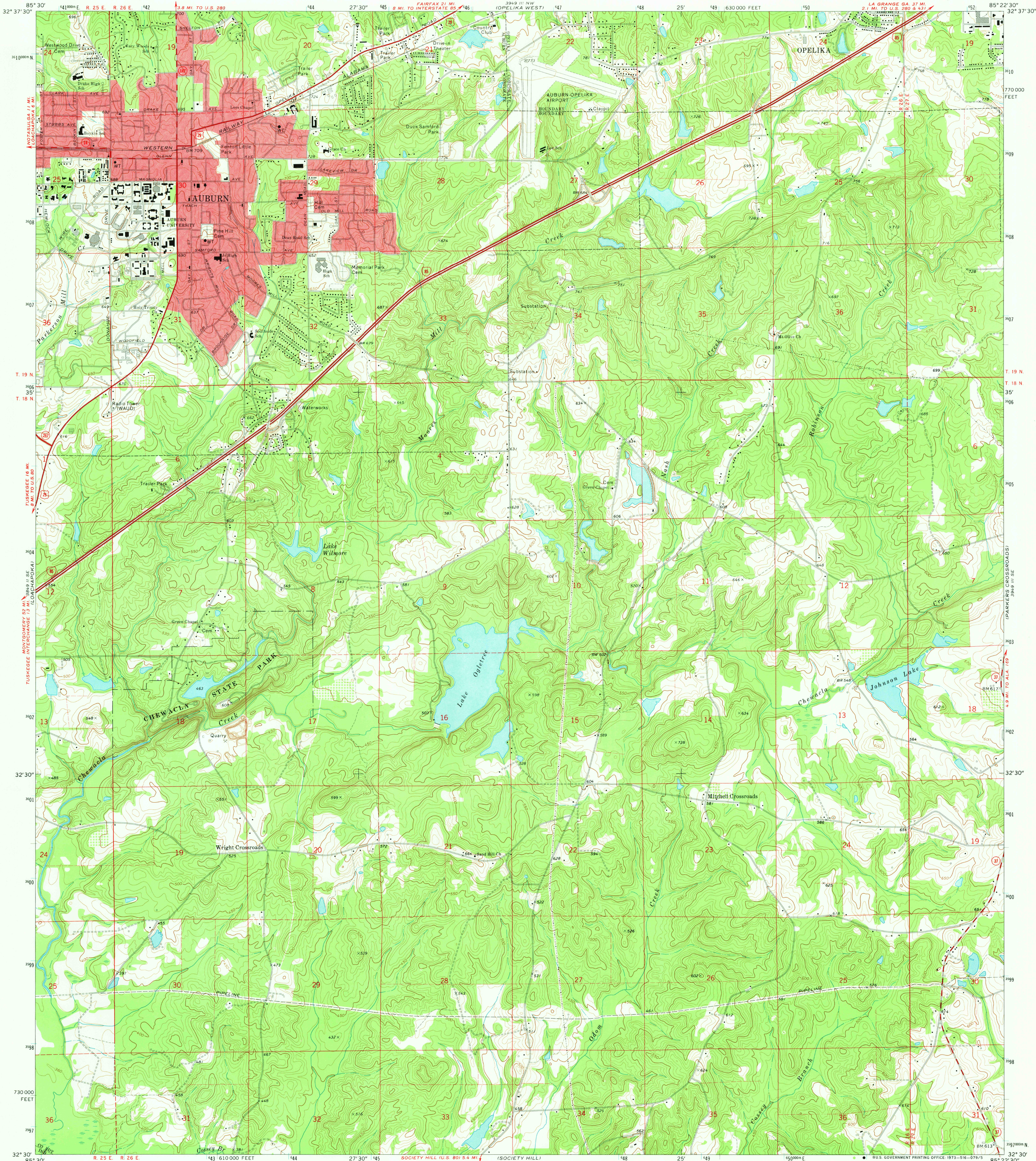
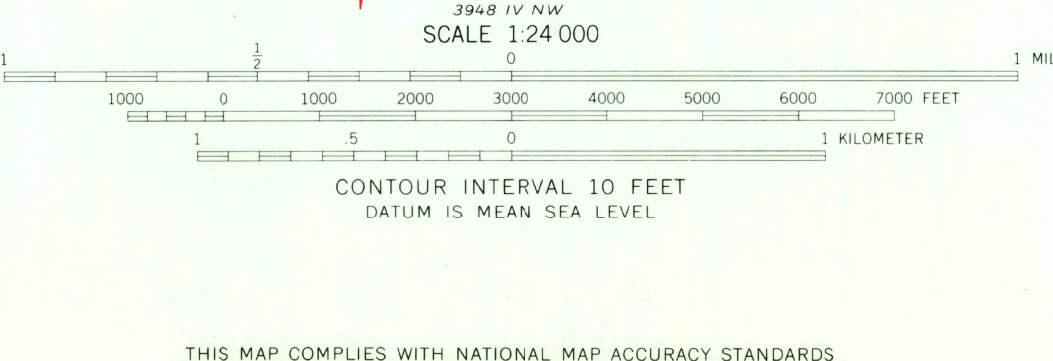
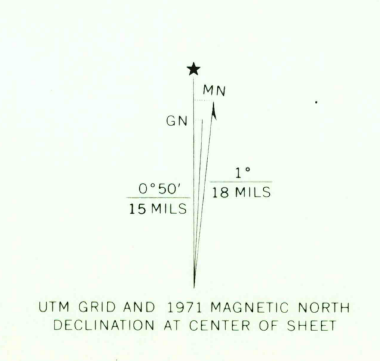


UNITED STATES  
DEPARTMENT OF THE INTERIOR  
GEOLOGICAL SURVEY

AUBURN QUADRANGLE  
ALABAMA—LEE CO.  
7.5 MINUTE SERIES (TOPOGRAPHIC)



Mapped, edited, and published by the Geological Survey  
Control by USGS and USC&GS  
Topography by photogrammetric methods from aerial  
photographs taken 1969. Field checked 1971  
Polyconic projection. 1927 North American datum  
10,000-foot grid based on Alabama coordinate system, east zone  
1000-meter Universal Transverse Mercator grid ticks,  
zone 16, shown in blue  
Red tint indicates area in which only landmark buildings are shown  
Fine red dashed lines indicate selected fence and field lines where  
generally visible on aerial photographs. This information is unchecked



ROAD CLASSIFICATION  
Primary highway, hard surface  
Secondary highway, hard surface  
Light-duty road, hard or improved surface  
Unimproved road  
Interstate Route  
U.S. Route  
State Route

USGS  
HISTORICAL FILE  
TOPOGRAPHIC DIVISION

AUBURN, ALA.  
N3230-W8522.5/7.5

MAY 10 1973

AMS 3949 III SW—SERIES V844