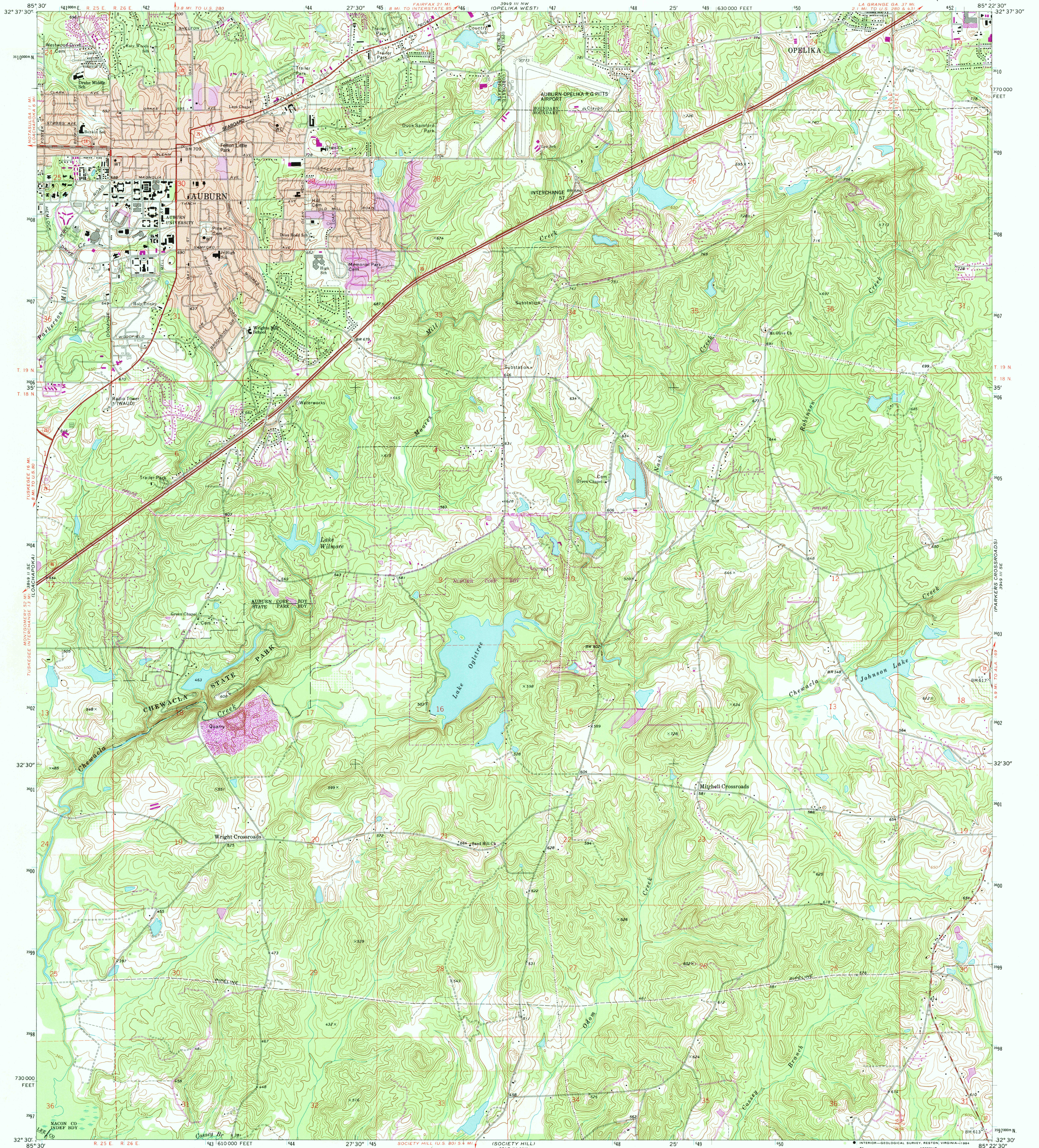


UNITED STATES  
DEPARTMENT OF THE INTERIOR  
GEOLOGICAL SURVEY

AUBURN QUADRANGLE  
ALABAMA  
7.5 MINUTE SERIES (TOPOGRAPHIC)



Mapped, edited, and published by the Geological Survey  
Control by USGS and NOS/NOAA  
Topography by photogrammetric methods from aerial photographs  
taken 1969. Field checked 1971  
Polyconic projection. 10,000-foot grid ticks based on  
Alabama coordinate system, east zone  
1000-meter Universal Transverse Mercator grid ticks,  
zone 16, shown in blue  
1927 North American Datum  
To place on the predicted North American Datum 1983  
move the projection lines 12 meters south and  
5 meters west as shown by dashed corner ticks  
Red tint indicates area in which only landmark buildings are shown  
Fine red dashed lines indicate selected fence and field lines where  
generally visible on aerial photographs. This information is unchecked  
There may be private inholdings within the boundaries  
of the National or State reservations shown on this map

Revisions shown in purple and woodland compiled from  
aerial photographs taken 1983 and other sources  
This information not field checked. Map edited 1983  
Purple tint indicates extension of urban areas

THIS MAP COMPLIES WITH NATIONAL MAP ACCURACY STANDARDS  
FOR SALE BY U.S. GEOLOGICAL SURVEY  
DENVER, COLORADO 80225, OR RESTON, VIRGINIA 22092  
A FOLDER DESCRIBING TOPOGRAPHIC MAPS AND SYMBOLS IS AVAILABLE ON REQUEST



AUBURN, ALA.  
32085-E4-TF-024

1971  
PHOTOREVISED 1983  
DMA 3949 III SW - SERIES V844