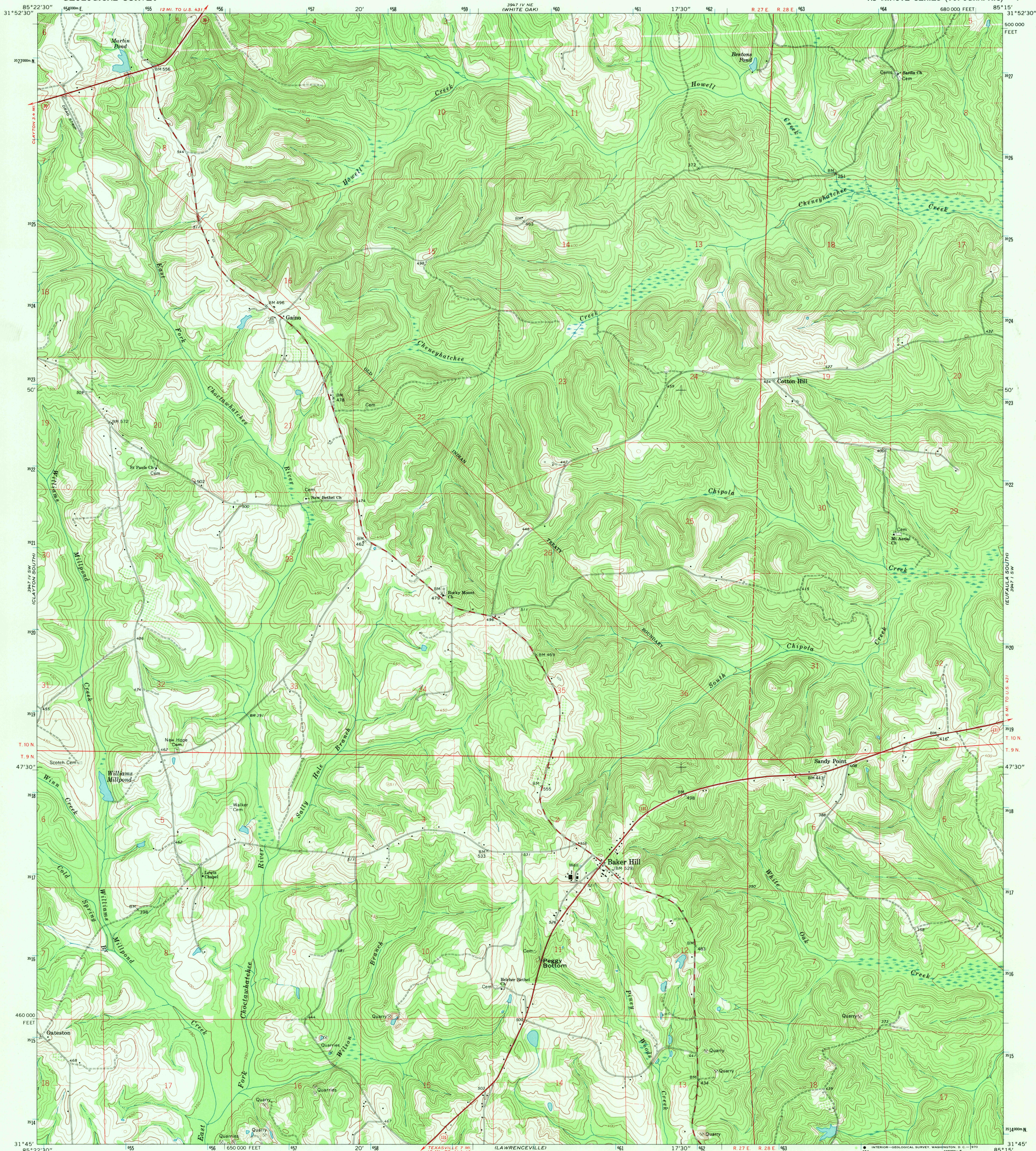
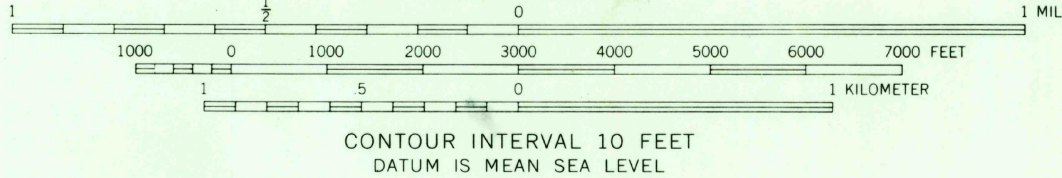
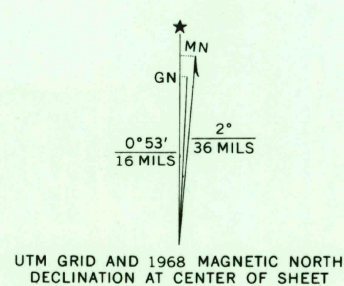


UNITED STATES  
DEPARTMENT OF THE INTERIOR  
GEOLOGICAL SURVEY

BAKER HILL QUADRANGLE  
ALABAMA—BARBOUR CO.  
7.5 MINUTE SERIES (TOPOGRAPHIC)



Mapped, edited, and published by the Geological Survey  
Control by USGS and USC&GS  
Topography by photogrammetric methods from aerial photographs  
taken 1965. Field checked 1968  
Polyconic projection. 1927 North American datum  
10,000 foot grid based on Alabama coordinate system, east zone  
1000-meter Universal Transverse Mercator grid ticks,  
zone 16, shown in blue  
Fine red dashed lines indicate selected fence and field lines where  
generally visible on aerial photographs. This information is unchecked



USGS  
Historical File  
Topographic Division

ROAD CLASSIFICATION  
Primary highway, all weather, hard surface  
Secondary highway, all weather, fair or dry hard surface  
Light-duty road, all weather, improved surface  
Unimproved road, fair or dry weather  
State Route



U.S.G.S.  
FILE COPY  
TOPOGRAPHIC DIVISION

BAKER HILL, ALA.  
N3145—W8515/7.5

1968

AMS 3947 IV SE—SERIES V844

THIS MAP COMPLIES WITH NATIONAL MAP ACCURACY STANDARDS  
FOR SALE BY U. S. GEOLOGICAL SURVEY, WASHINGTON, D. C. 20242  
A FOLDER DESCRIBING TOPOGRAPHIC MAPS AND SYMBOLS IS AVAILABLE ON REQUEST

NOV 9 1970