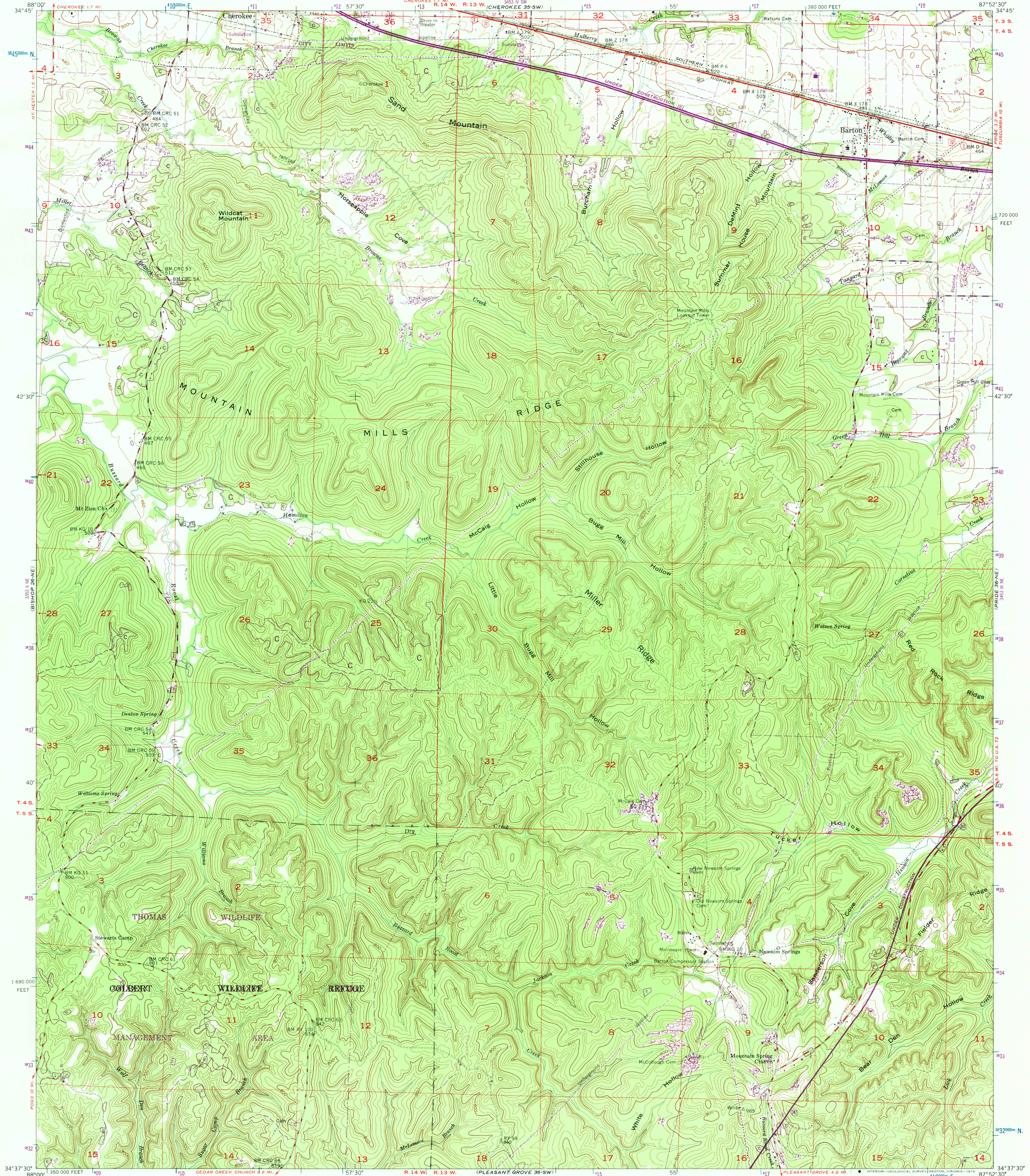


UNITED STATES
DEPARTMENT OF THE INTERIOR
GEOLOGICAL SURVEY

UNITED STATES
TENNESSEE VALLEY AUTHORITY
MAPS AND SURVEYS BRANCH

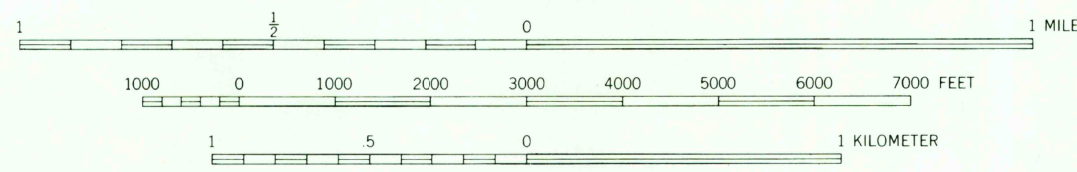
BARTON QUADRANGLE
ALABAMA-COLBERT CO.
7.5 MINUTE SERIES (TOPOGRAPHIC) 36-NW



Mapped and edited by Tennessee Valley Authority
Published by the Geological Survey

Control by US&GS, USGS, and TVA
Topography by multiplex methods from aerial
photographs taken 1950. Field examination by TVA, 1953
Polyconic projection, 1927 North American datum
10,000-foot grid based on Alabama (West)
rectangular coordinate system
1000 meter Universal Transverse Mercator Grid ticks,
Zone 16, shown in blue and labeled in purple
Grid declination 0°32' 9" Mills West
Revisions in purple compiled by TVA, January 1968 from
April 1967 photography without field examination
No larger scale topographic maps available from TVA.

3 1/2° 62 MILS
TRUE NORTH
MAGNETIC NORTH
APPROXIMATE MEAN
DECLINATION 1955
1959



CONTOUR INTERVAL 20 FEET
DASHED LINES REPRESENT HALF-INTERVAL CONTOURS
NATIONAL GEODETIC VERTICAL DATUM OF 1929
THIS MAP COMPLIES WITH NATIONAL MAP ACCURACY STANDARDS
FOR SALE BY U. S. GEOLOGICAL SURVEY, RESTON, VIRGINIA 22092,
AND U. S. TENNESSEE VALLEY AUTHORITY, CHATTANOOGA, TENN. 37401 OR KNOXVILLE, TENN. 37902
A FOLDER DESCRIBING TOPOGRAPHIC MAPS AND SYMBOLS IS AVAILABLE ON REQUEST



ROAD CLASSIFICATION
HARD-SURFACE ALL WEATHER ROADS
Heavy-duty ———— Improved dirt ————
Medium-duty ———— Unimproved dirt ————
Loose-surface, graded, or narrow hard-surface ————
U. S. Route ———— State Route ————

LEGEND
Fence and field line ————
Stream ————
Pond and dam ————
Mine or quarry ————
Woodland (formerly clearing) ————
Clearing (formerly woodland) ————
Wagon and jeep track ————
BARTON, ALA.
N3437.5-W8752.5/7.5
1953
MINOR CORRECTIONS MADE 1956
36-NW
AMS 3453 IN NW SERIES 984

AUG 3 1974 3100