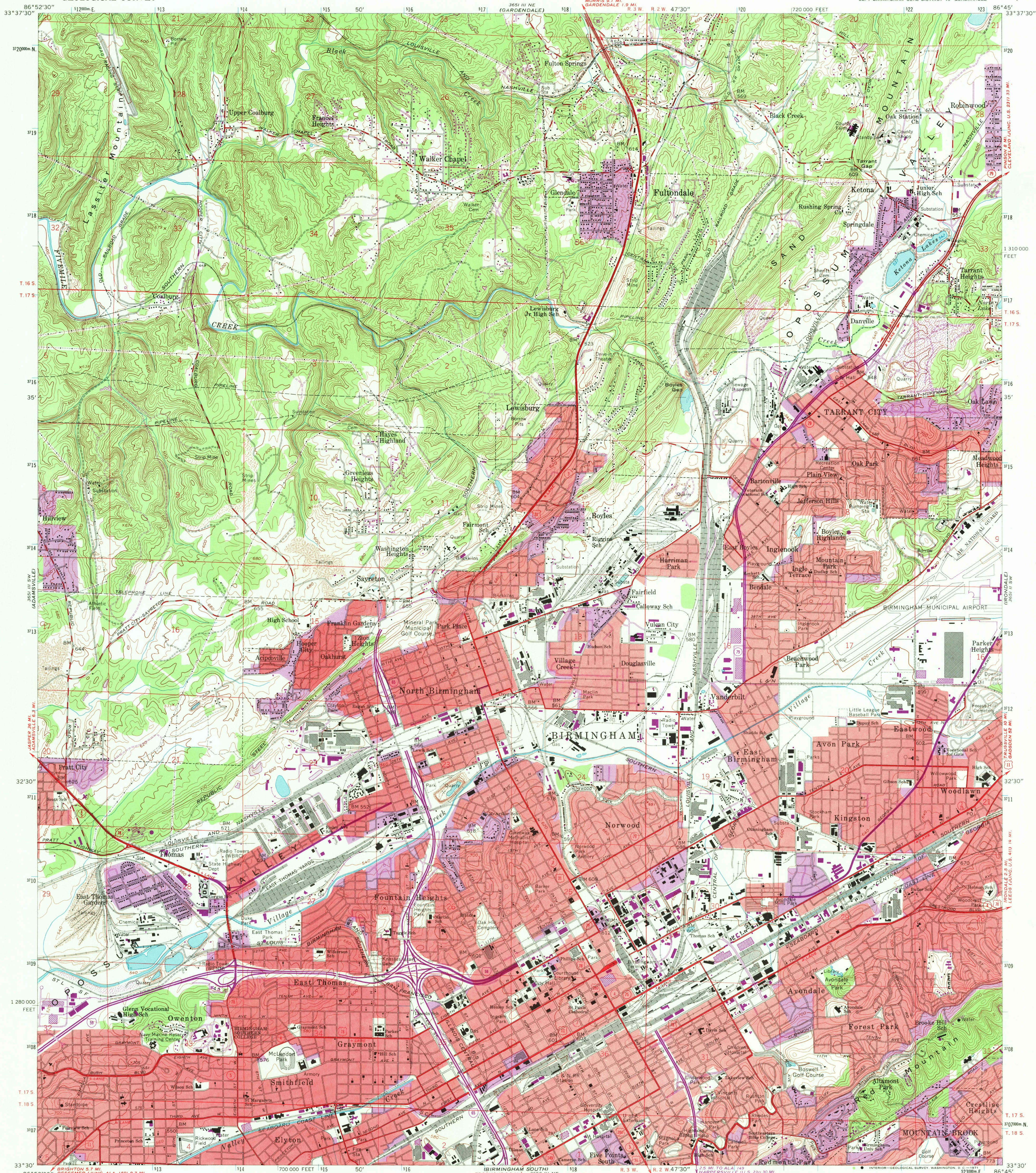
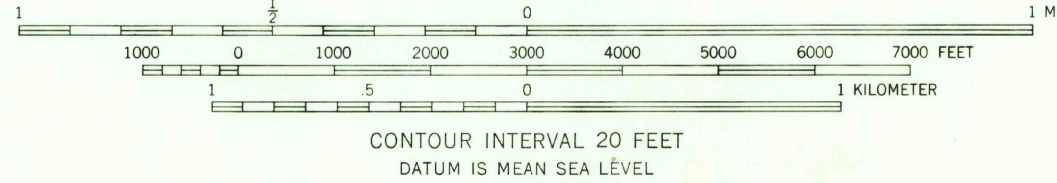
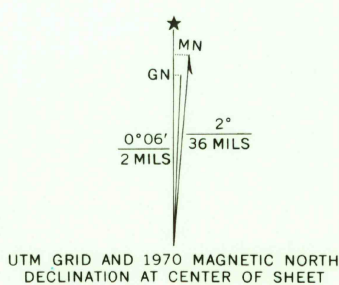


UNITED STATES
DEPARTMENT OF THE INTERIOR
GEOLOGICAL SURVEY

BIRMINGHAM NORTH QUADRANGLE
ALABAMA—JEFFERSON CO.
7.5 MINUTE SERIES (TOPOGRAPHIC)
SE/4 BIRMINGHAM COAL DISTRICT 15' QUADRANGLE



Mapped, edited, and published by the Geological Survey
Control by USGS, USC&GS, USCE, and Alabama Geodetic Survey
Topography from aerial photographs by photogrammetric methods
Aerial photographs taken 1957. Field check 1959
Polyconic projection. 1927 North American datum
10,000-foot grid based on Alabama coordinate system, west zone
1000-meter Universal Transverse Mercator grid ticks,
zone 16, shown in blue
Red tint indicates areas in which only
landmark buildings are shown
Revisions shown in purple compiled from aerial photographs
taken 1970. This information not field checked
Purple tint indicates extension of urban areas



ROAD CLASSIFICATION	
Heavy-duty	Light-duty
Medium-duty	Unimproved dirt
Interstate Route	U. S. Route
	State Route

BIRMINGHAM NORTH, ALA.
SE/4 BIRMINGHAM COAL DISTRICT 15' QUADRANGLE
N3330—W8645/7.5

1959
PHOTOGRAPHED 1970
AMS 3651 III SE—SERIES V844

THIS MAP COMPLIES WITH NATIONAL MAP ACCURACY STANDARDS
FOR SALE BY U. S. GEOLOGICAL SURVEY, WASHINGTON, D. C. 20242
A FOLDER DESCRIBING TOPOGRAPHIC MAPS AND SYMBOLS IS AVAILABLE ON REQUEST

OCT 4 1971