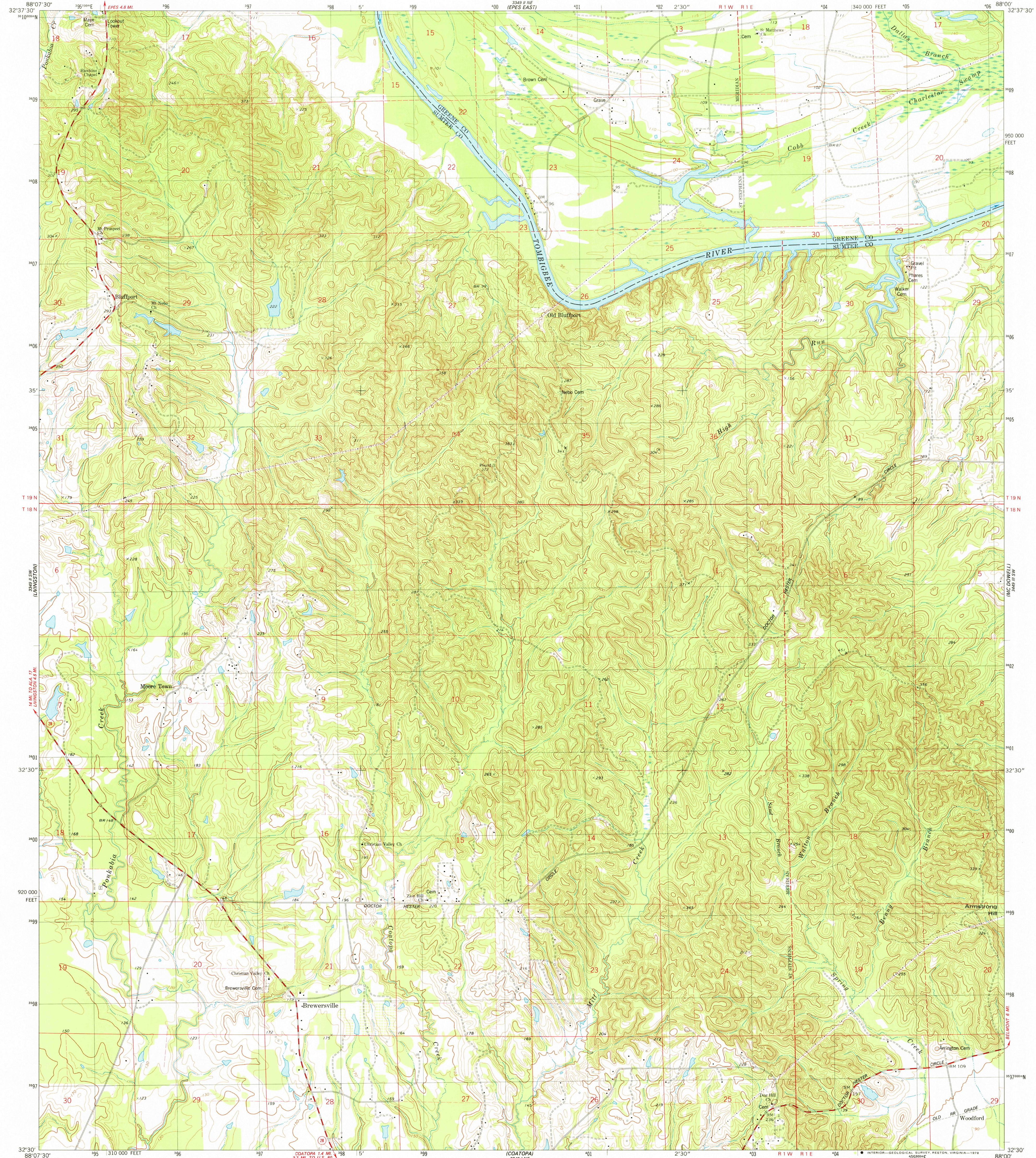


348° 11' NW
(62° 5' WEST)

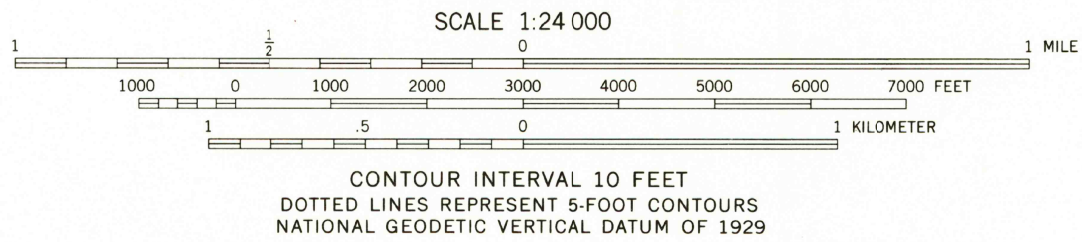
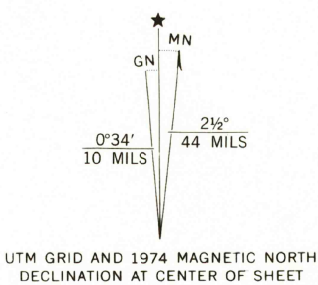
UNITED STATES
DEPARTMENT OF THE INTERIOR
GEOLOGICAL SURVEY

BREWERSVILLE QUADRANGLE
ALABAMA
7.5 MINUTE SERIES (TOPOGRAPHIC)
SE/4 EPES 15' QUADRANGLE

348° 11' NW
(FORLAND)



Mapped, edited, and published by the Geological Survey
Control by USGS and NOS/NOAA
Topography by photogrammetric methods from aerial photographs taken 1973-74. Field checked 1974
Projection and 10,000-foot grid ticks: Alabama coordinate system, west zone (transverse Mercator)
1000-meter Universal Transverse Mercator grid, zone 16
1927 North American datum
Fine red dashed lines indicate selected fence and field lines where generally visible on aerial photographs. This information is unchecked



ROAD CLASSIFICATION
Primary highway, hard surface
Secondary highway, hard surface
Interstate Route
Light duty road, hard or improved surface
Unimproved road
U.S. Route
State Route
NOV 0 6 1978
USGS
Historical File
Topographic Division
BREWERSVILLE, ALA.
SE/4 EPES 15' QUADRANGLE
N3230 — W8800/7.5
1974
AMS 3349 II SE—SERIES W844

THIS MAP COMPLIES WITH NATIONAL MAP ACCURACY STANDARDS
FOR SALE BY U. S. GEOLOGICAL SURVEY, RESTON, VIRGINIA 22092
A FOLDER DESCRIBING TOPOGRAPHIC MAPS AND SYMBOLS IS AVAILABLE ON REQUEST