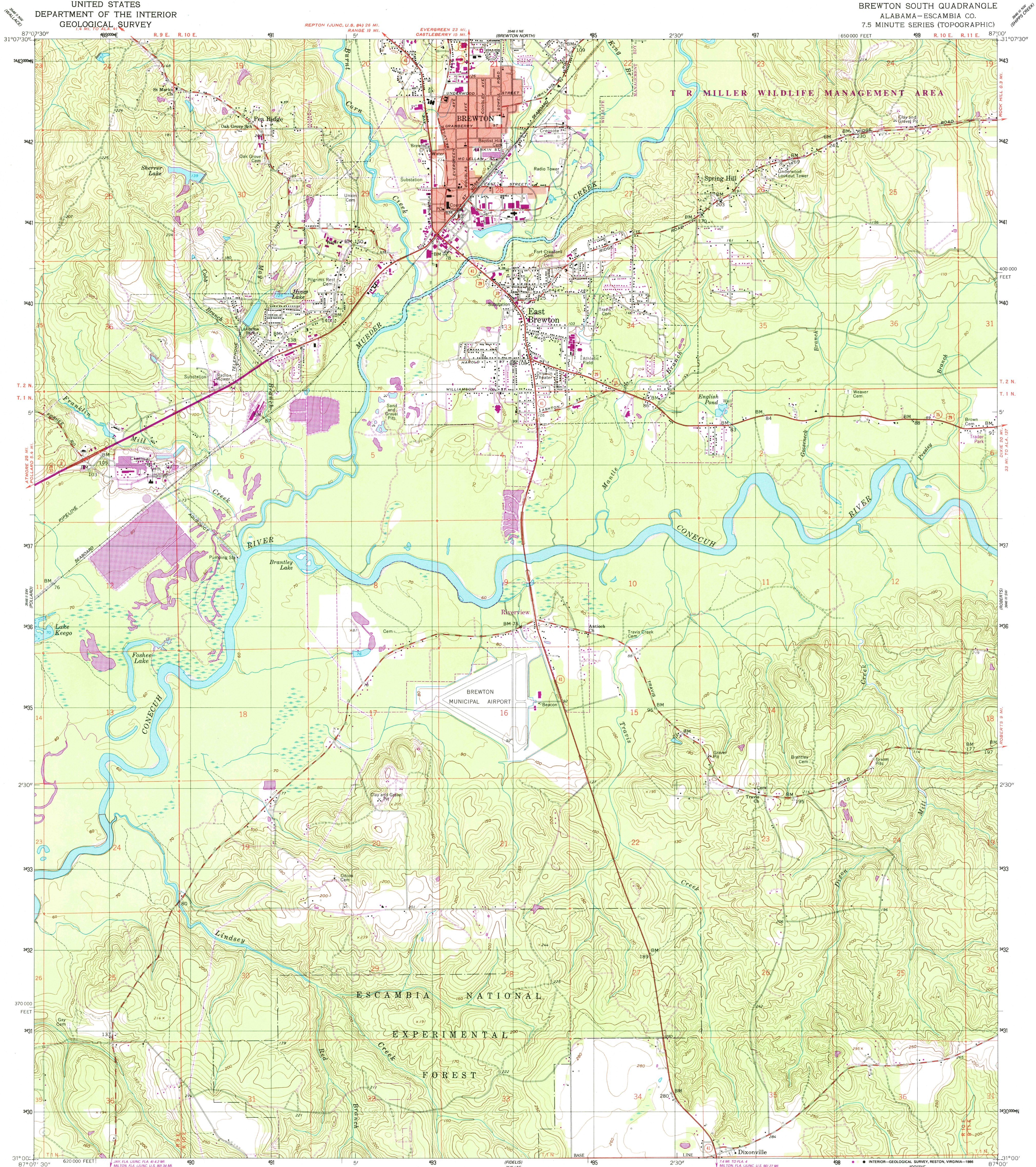


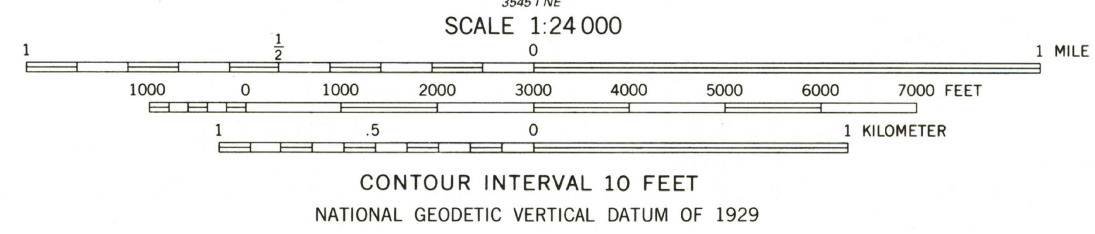
UNITED STATES
DEPARTMENT OF THE INTERIOR
GEOLOGICAL SURVEY

BREWTON SOUTH QUADRANGLE
ALABAMA-ESCAMBIA CO.
7.5 MINUTE SERIES (TOPOGRAPHIC)



Mapped, edited, and published by the Geological Survey
Control by USGS, NOS/NOAA, and Alabama Geodetic Survey
Topography by photogrammetric methods from aerial
photographs taken 1958. Field checked 1960
Polyconic projection. 10,000-foot grid ticks based on Alabama
coordinate system, west zone
1000-meter Universal Transverse Mercator grid, zone 16
1927 North American Datum
To place on the predicted North American Datum 1983
move the projection lines 15 meters south and
3 meters west as shown by dashed corner ticks
Fine red dashed lines indicate selected fence and field lines where
generally visible on aerial photographs. This information is unchecked
Red tint indicates area in which only landmark buildings are shown
There may be private inholdings within the boundaries of
the National or State reservations shown on this map

Revisions shown in purple and woodland compiled from
aerial photographs taken 1984 and other sources. This
information not field checked. Map edited 1986



THIS MAP COMPLIES WITH NATIONAL MAP ACCURACY STANDARDS
FOR SALE BY U.S. GEOLOGICAL SURVEY, RESTON, VIRGINIA 22092
A FOLDER DESCRIBING TOPOGRAPHIC MAPS AND SYMBOLS IS AVAILABLE ON REQUEST

ROAD CLASSIFICATION

Primary highway, hard surface	Light-duty road, hard or improved surface
Secondary highway, hard surface	Unimproved road

○ Interstate Route □ U.S. Route ○ State Route

ALABAMA

QUADRANGLE LOCATION

USGS MMD HISTORICAL MAP
MAR 23 1987
REC'D FILE COPY

BREWTON SOUTH, ALA.
31087-A1-TF-024

1960
PHOTOREVISED 1986
DMA 3546 II SE-SERIES V844