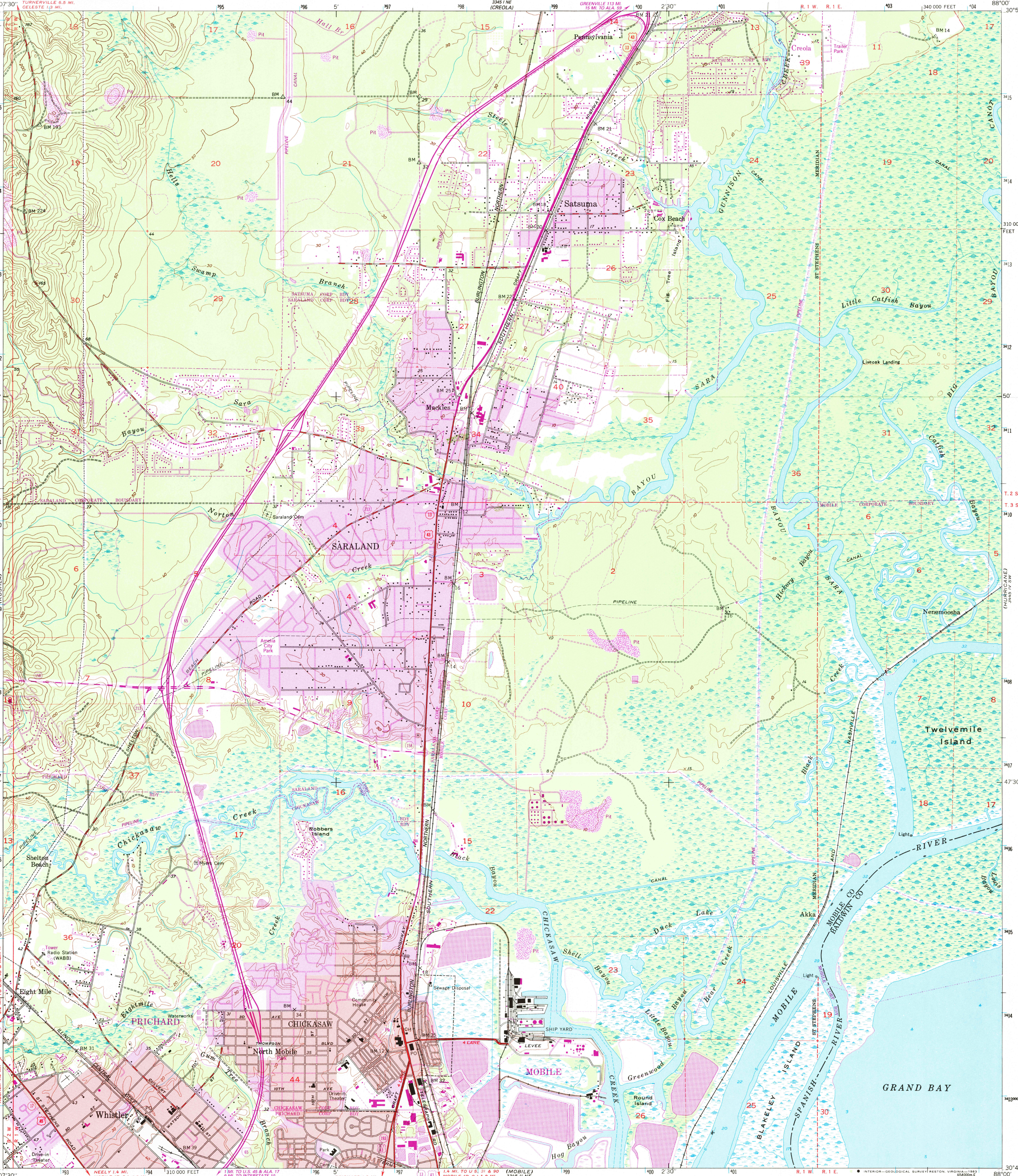


UNITED STATES
DEPARTMENT OF THE INTERIOR
GEOLOGICAL SURVEY

CHICKASAW QUADRANGLE
ALABAMA
7.5 MINUTE SERIES (TOPOGRAPHIC)
SE/4 CREOLA 15' QUADRANGLE



Mapped, edited, and published by the Geological Survey
Control by USGS, USC&GS, and Alabama Geodetic Survey
Culture and drainage in part compiled from aerial photographs
Topography by plane-table surveys 1938-1940, and in part by
Tennessee Coal, Iron and Railroad Co. Revised 1953
Hydrography compiled from USC&GS Chart 1266 (1:80,000)
Polyconic projection. 1927 North American datum
10,000-foot grid based on Alabama coordinate system,
west zone
Red tint indicates areas in which only
landmark buildings are shown
Dashed land lines indicate approximate locations
Certain land lines are omitted in T. 3 S.—R. 1 E. because of
insufficient data
1000-meter Universal Transverse Mercator grid ticks,
zone 16, shown in blue

UTM GRID AND 1983 MAGNETIC NORTH
DECLINATION AT CENTER OF SHEET
To place on the predicted North American Datum 1983
move the projection lines 17 meters south and
1 meter east as shown by dashed corner ticks

SCALE 1:24000
1 0 1000 2000 3000 4000 5000 6000 7000 FEET
1 0 5 10 15 20 25 30 KILOMETER
CONTOUR INTERVAL 10 FEET
NATIONAL GEODETIC VERTICAL DATUM OF 1929
DEPTH CURVES AND SOUNDINGS IN FEET—GULF COAST LOW WATER DATUM
THE RELATIONSHIP BETWEEN THE TWO DATUMS IS VARIABLE
SHORELINE SHOWN REPRESENTS THE APPROXIMATE LINE OF MEAN HIGH WATER
THE MEAN RANGE OF TIDE IS APPROXIMATELY 1 FOOT
THIS MAP COMPLIES WITH NATIONAL MAP ACCURACY STANDARDS
FOR SALE BY U. S. GEOLOGICAL SURVEY, RESTON, VIRGINIA 22092
A FOLDER DESCRIBING TOPOGRAPHIC MAPS AND SYMBOLS IS AVAILABLE ON REQUEST

Revisions shown in purple compiled from aerial
photographs taken 1981 and other sources
This information not field checked. Map edited 1982
Purple tint indicates extension of urban area

ROAD CLASSIFICATION
Heavy-duty ——— Light-duty ———
Medium-duty ——— Unimproved dirt ———
Interstate Route U. S. Route State Route
CHICKASAW, ALA.
SE/4 CREOLA 15' QUADRANGLE
N 3045—W 8800/7.5
1953
PHOTOREVISED 1982
DMA 3345 I SE—SERIES V844

2895