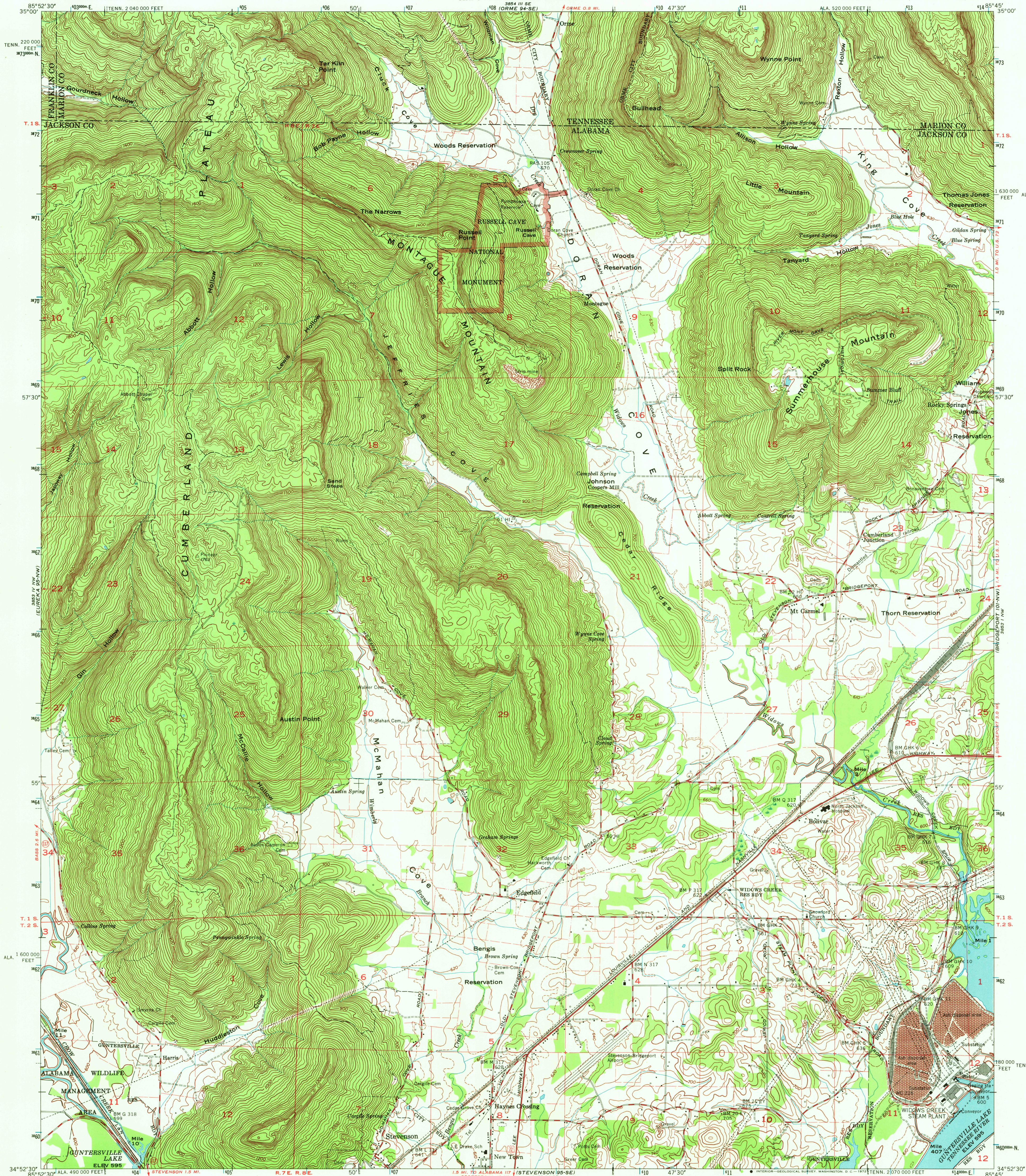


UNITED STATES
DEPARTMENT OF THE INTERIOR
GEOLOGICAL SURVEY

UNITED STATES
TENNESSEE VALLEY AUTHORITY
MAPS AND SURVEYS BRANCH

DORAN COVE QUADRANGLE
ALABAMA-TENNESSEE
7.5 MINUTE SERIES (TOPOGRAPHIC) 95-NE

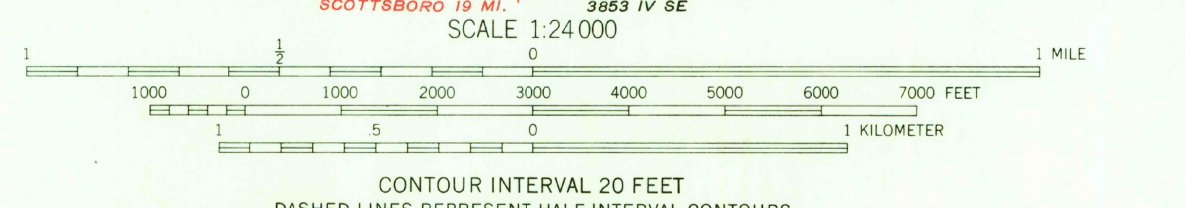
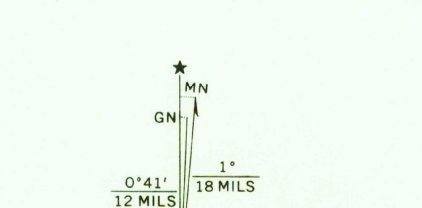


Mapped and edited by Tennessee Valley Authority
Published by the Geological Survey
Control by USC&GS, USGS, and TVA

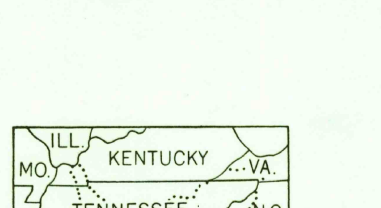
Revised by TVA in 1967 by photogrammetric methods using
aerial photographs taken 1967 and by reference to TVA-USGS
quadrangle dated 1950. Map field checked by TVA, 1967

Polyconic projection, 1927 North American datum
10,000 foot grid based on Alabama (East)
and Tennessee rectangular coordinate systems
1000 meter Universal Transverse Mercator Grid ticks,
Zone 16, shown in blue

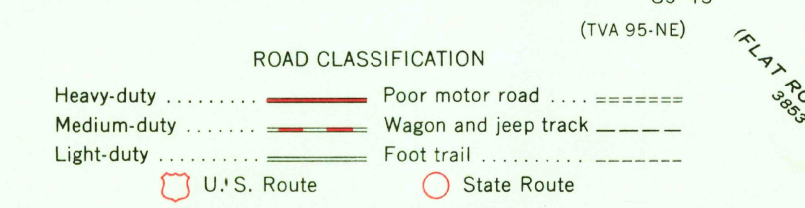
Fine red dashed lines indicate selected fence and field lines
visible on aerial photography. This information is unchecked



CONTOUR INTERVAL 20 FEET
DASHED LINES REPRESENT HALF-INTERVAL CONTOURS
DATUM IS MEAN SEA LEVEL
THIS MAP COMPLIES WITH NATIONAL MAP ACCURACY STANDARDS
FOR SALE BY U.S. GEOLOGICAL SURVEY, WASHINGTON, D.C. 20242,
TENNESSEE DIVISION OF GEOLOGY, NASHVILLE, TENN. 37219,
U.S. TENNESSEE VALLEY AUTHORITY, CHATTANOOGA, TENN. 37401 OR KNOXVILLE, TENN. 37902
A FOLDER DESCRIBING TOPOGRAPHIC MAPS AND SYMBOLS IS AVAILABLE ON REQUEST



QUADRANGLE LOCATION



ROAD CLASSIFICATION
Heavy-duty Poor motor road
Medium-duty Wagon and jeep track
Light-duty Foot trail
U.S. Route State Route
In developed areas, only through roads are classified

DORAN COVE, ALA.-TENN. APR 3 1972
N3452.5-W8545/7.5
1967
AMS 3853 IV NE-SERIES V844
USGS HISTORICAL FILE