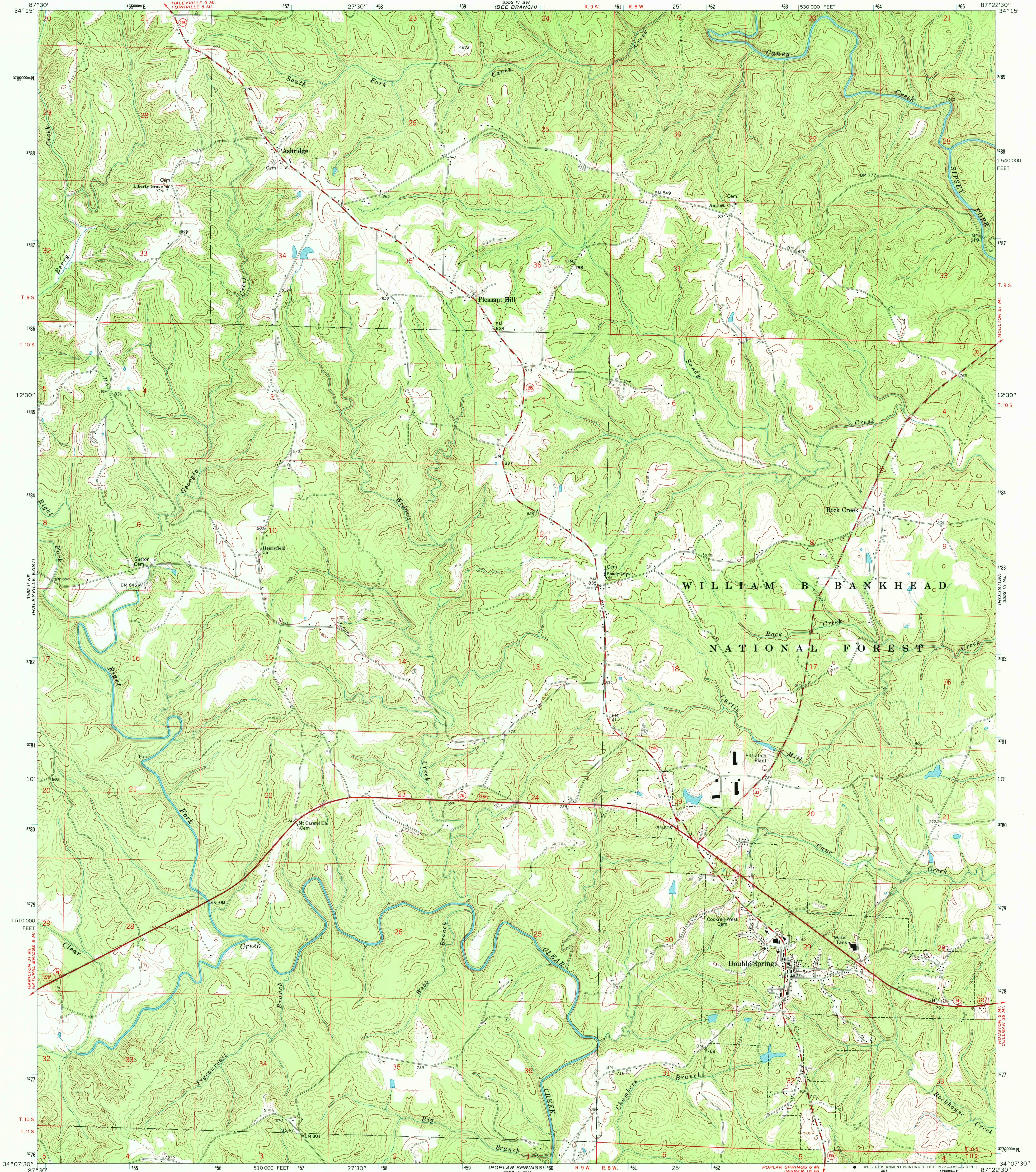
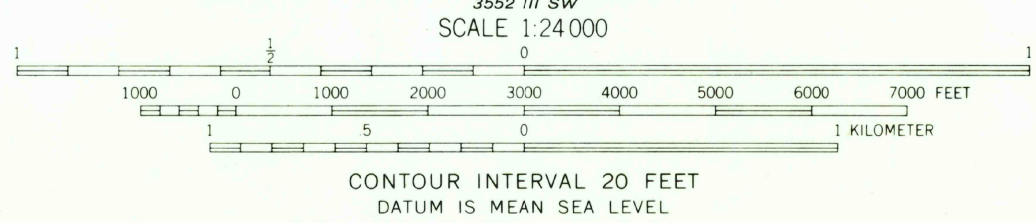
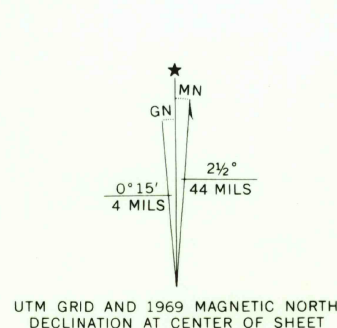


UNITED STATES  
DEPARTMENT OF THE INTERIOR  
GEOLOGICAL SURVEY

DOUBLE SPRINGS QUADRANGLE  
ALABAMA—WINSTON CO.  
7.5 MINUTE SERIES (TOPOGRAPHIC)



Mapped, edited, and published by the Geological Survey  
Control by USGS and USC&GS  
Topography by photogrammetric methods from aerial photographs  
taken 1966 and 1967. Field checked 1969  
Polyconic projection. 1927 North American datum  
10,000-foot grid based on Alabama coordinate system, west zone  
1000-meter Universal Transverse Mercator grid ticks,  
zone 16, shown in blue  
Fine red dashed lines indicate selected fence and field lines where  
generally visible on aerial photographs. This information is unchecked



ROAD CLASSIFICATION  
Primary highway, hard surface ———— Light duty road, hard or improved surface ————  
Secondary highway, hard surface ———— Unimproved road ————  
○ Interstate Route ○ U.S. Route ○ State Route  
MAR 2 2 1973  
DOUBLE SPRINGS, ALA.  
N3407.5—W8722.5/7.5

THIS MAP COMPLIES WITH NATIONAL MAP ACCURACY STANDARDS  
FOR SALE BY U.S. GEOLOGICAL SURVEY, WASHINGTON, D. C. 20242  
A FOLDER DESCRIBING TOPOGRAPHIC MAPS AND SYMBOLS IS AVAILABLE ON REQUEST

USGS  
HISTORICAL FILE  
TOPOGRAPHIC DIVISION

1969  
AMS 3552 III NW—SERIES V844