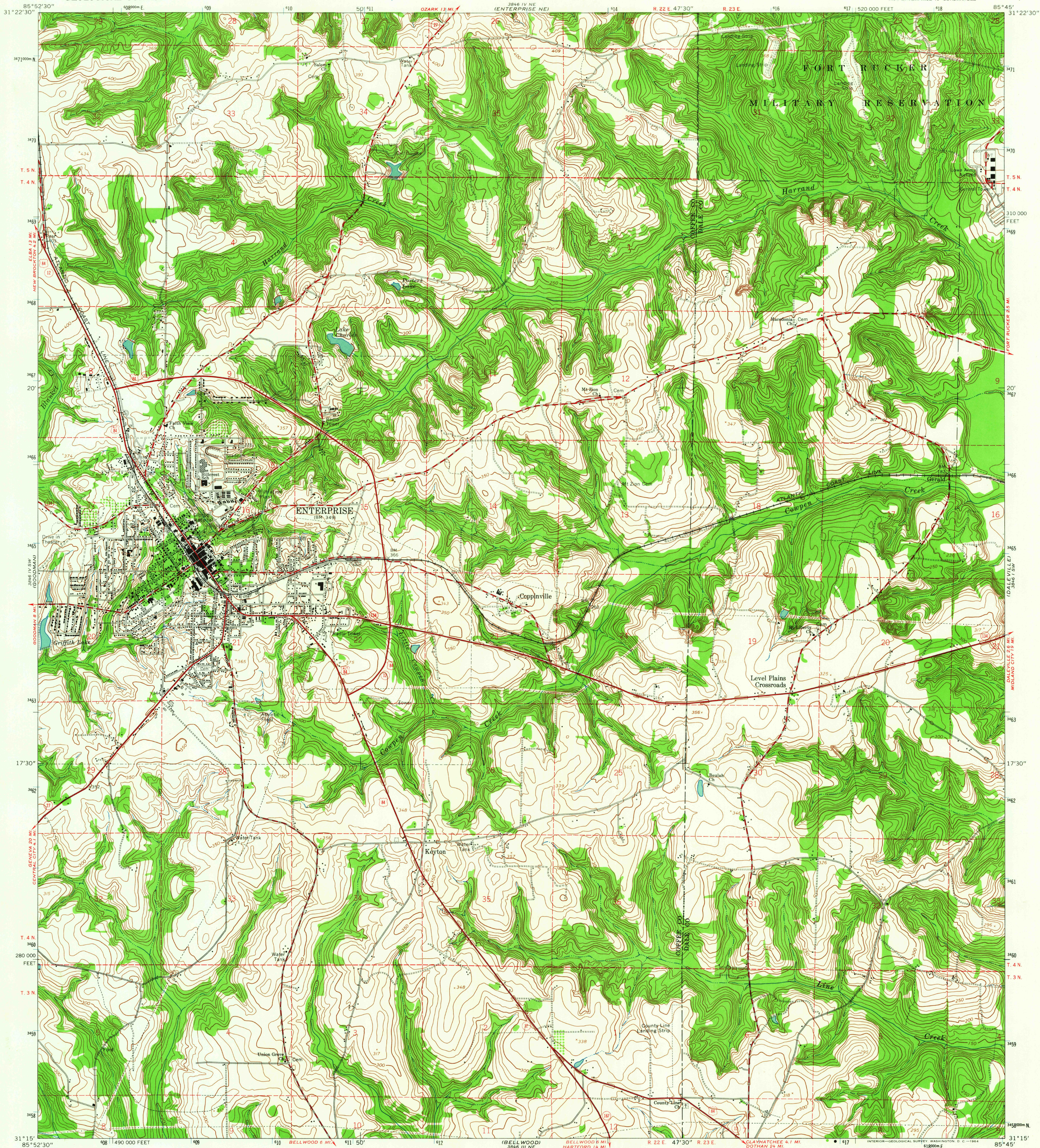


UNITED STATES  
DEPARTMENT OF THE INTERIOR  
GEOLOGICAL SURVEY

ENTERPRISE QUADRANGLE  
ALABAMA  
7.5 MINUTE SERIES (TOPOGRAPHIC)  
SE/4 ENTERPRISE 15' QUADRANGLE

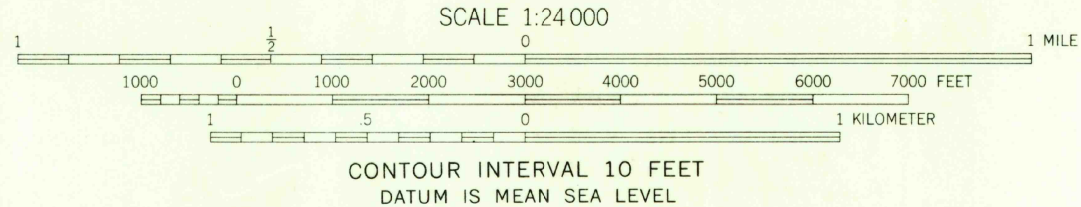
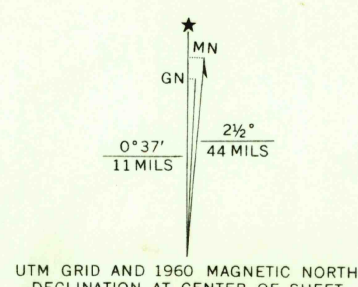


Mapped by the Army Map Service  
Published for civil use by the Geological Survey

Control by USC&GS and USCE

Topography by photogrammetric methods from aerial photographs  
taken 1946. Field checked 1948. Revised from aerial photographs  
taken 1959, field annotated 1960

Polyconic projection. 1927 North American datum  
10,000-foot grid based on Alabama coordinate system, east zone  
1000-meter Universal Transverse Mercator grid ticks,  
zone 16, shown in blue



THIS MAP COMPLIES WITH NATIONAL MAP ACCURACY STANDARDS  
FOR SALE BY U. S. GEOLOGICAL SURVEY, WASHINGTON 25, D. C.  
A FOLDER DESCRIBING TOPOGRAPHIC MAPS AND SYMBOLS IS AVAILABLE ON REQUEST

ROAD CLASSIFICATION  
Heavy-duty ——— Light-duty ———  
Medium-duty ——— Unimproved dirt ———  
U. S. Route —○— State Route —○—

USGS  
Historical File  
Topographic Division

ENTERPRISE, ALA.

SE/4 ENTERPRISE 15' QUADRANGLE  
N3115—W8545/7.5

1960

AMS 3846 IV SE—SERIES V844

U.S.G.S.  
FILE COPY  
TOPOGRAPHIC DIVISION

HISTORICAL

DEC 9 1964

2570