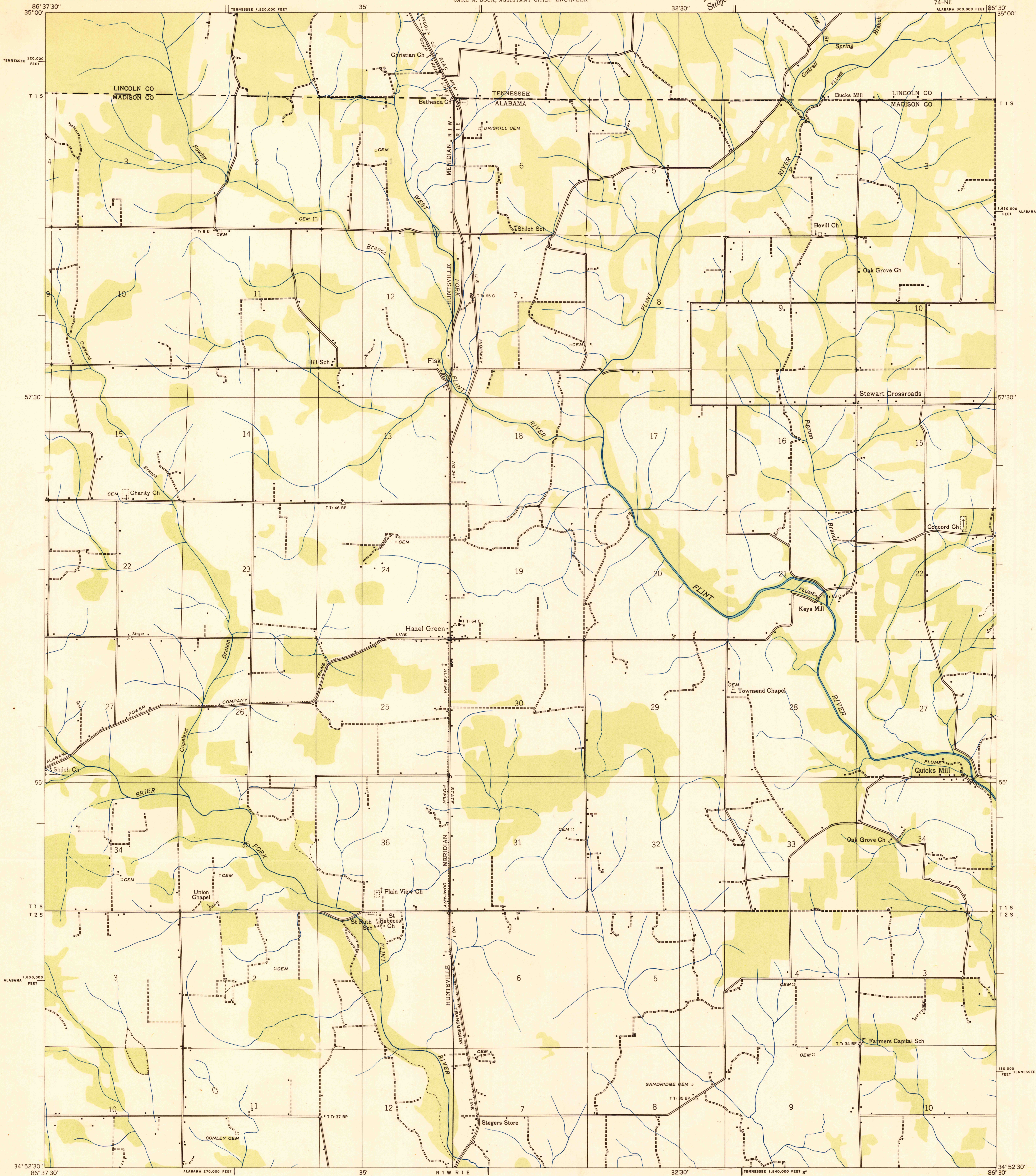
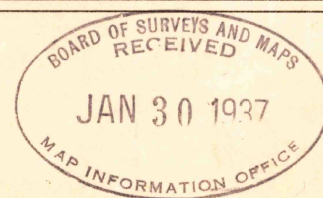
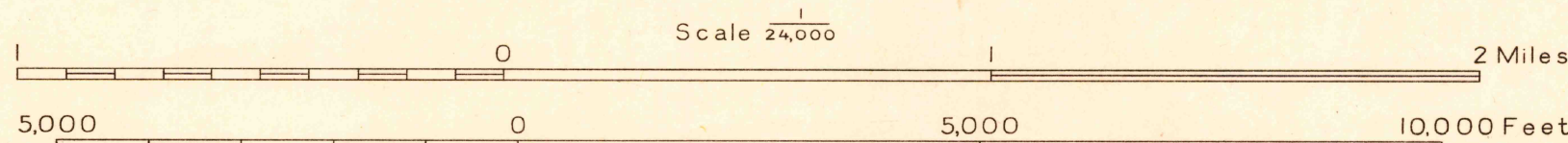


Advance sheet
Subject to correction



Albert Pike, Division Engineer
Compiled by U. S. Geological Survey from aerial photographs
Control by U. S. Geological Survey and U. S. Coast and Geodetic Survey
Field examination in 1936



TRUE NORTH
MAGNETIC NORTH
APPROXIMATE MEAN
DECLINATION, 1936

Polyconic projection. 1927 North American datum
10,000 foot grid based on Alabama (East) and Tennessee
rectangular coordinate systems

Trail
Sinks
Probable drainage

FISK, ALA.-TENN. 74-NE

ALABAMA

USGS
Historical File
Topographic Division