

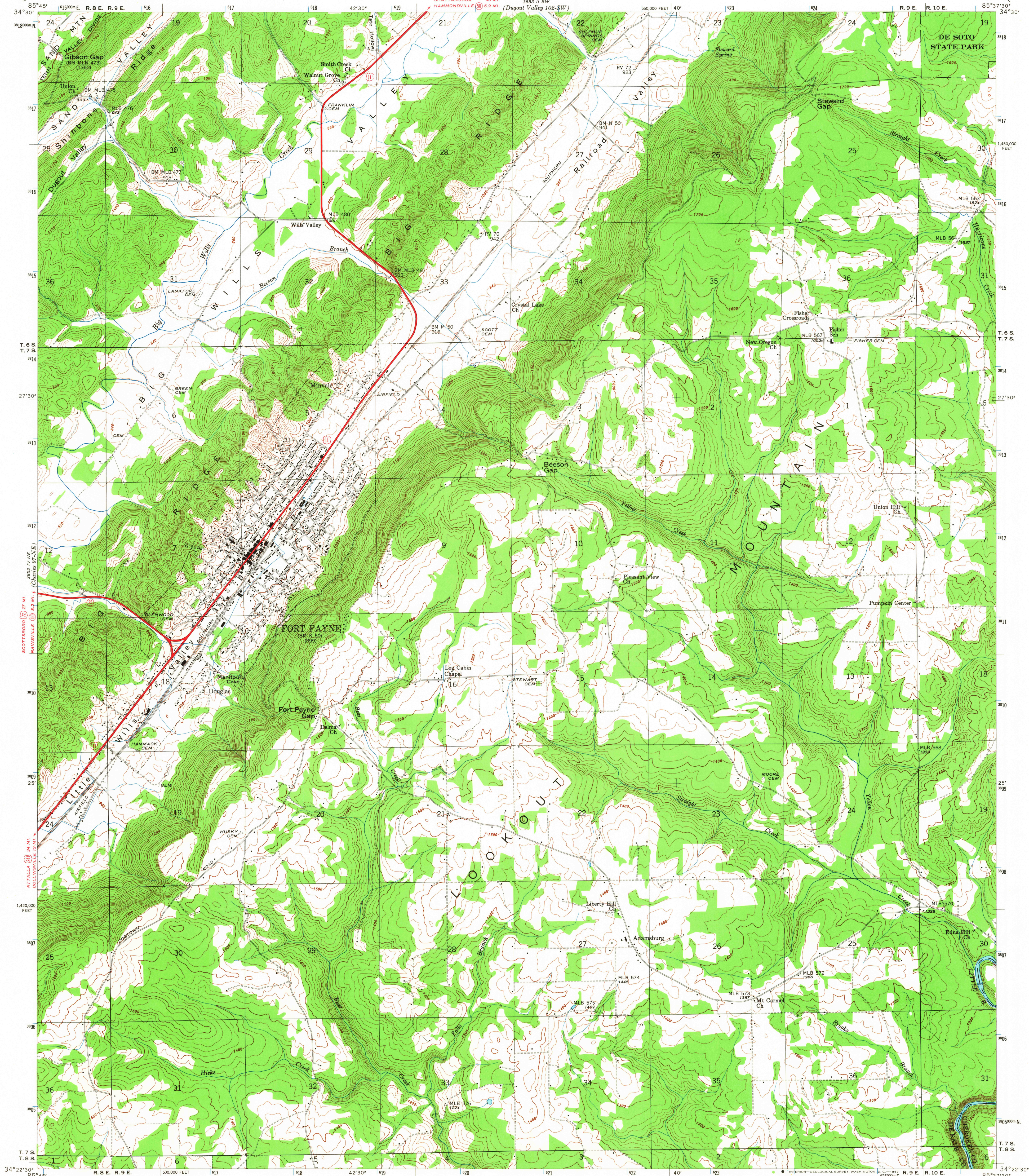
(Sylvan 10 SE)
area 11 SE

UNITED STATES
DEPARTMENT OF THE INTERIOR
GEOLOGICAL SURVEY

UNITED STATES
TENNESSEE VALLEY AUTHORITY
MAPS AND SURVEYS DIVISION

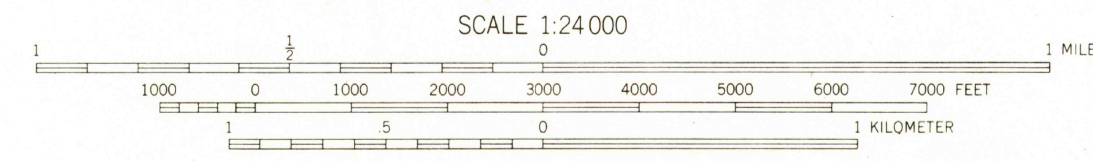
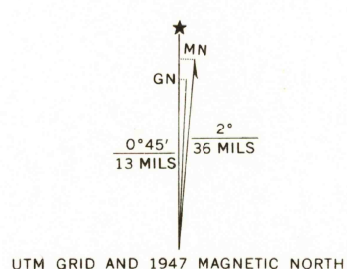
ALABAMA
FT. PAYNE QUADRANGLE
97A-NW

area 11 SE
(Valley Head 102-SW)



(Porterville 95 SE)
area 11 SE

Control by USC&GS, USGS, and TVA
Topography by USGS and TVA from aerial
photographs by stereophotogrammetric methods
Field examination by Tennessee Valley Authority, 1946



Contour interval 20 feet
Datum is mean sea level

FOR SALE BY U. S. GEOLOGICAL SURVEY, WASHINGTON, D. C. 20242.
U. S. TENNESSEE VALLEY AUTHORITY, CHATTANOOGA, TENN. 37401 OR KNOXVILLE, TENN. 37902
A FOLDER DESCRIBING TOPOGRAPHIC MAPS AND SYMBOLS IS AVAILABLE ON REQUEST

USGS
Historical File
Topographic Division

U.S.G.S.
FILE COPY
TOPOGRAPHIC DIVISION
HISTORICAL

Polyconic projection, 1927 North American datum
10,000 foot grid based on Alabama (East)
rectangular coordinate system.
1000-meter Universal Transverse Mercator grid ticks,
Zone 16, shown in blue.
ROUTES USUALLY TRAVELED
HARD, IMPERVIOUS SURFACES
OTHER SURFACE IMPROVEMENTS
U. S. ROUTE STATE ROUTE

FT. PAYNE, ALA.
97A-NW
N3422.5 W8537.5/7.5
1946
AMS 3852 1 NW-SERIES V844

1675
NOV 17 1967