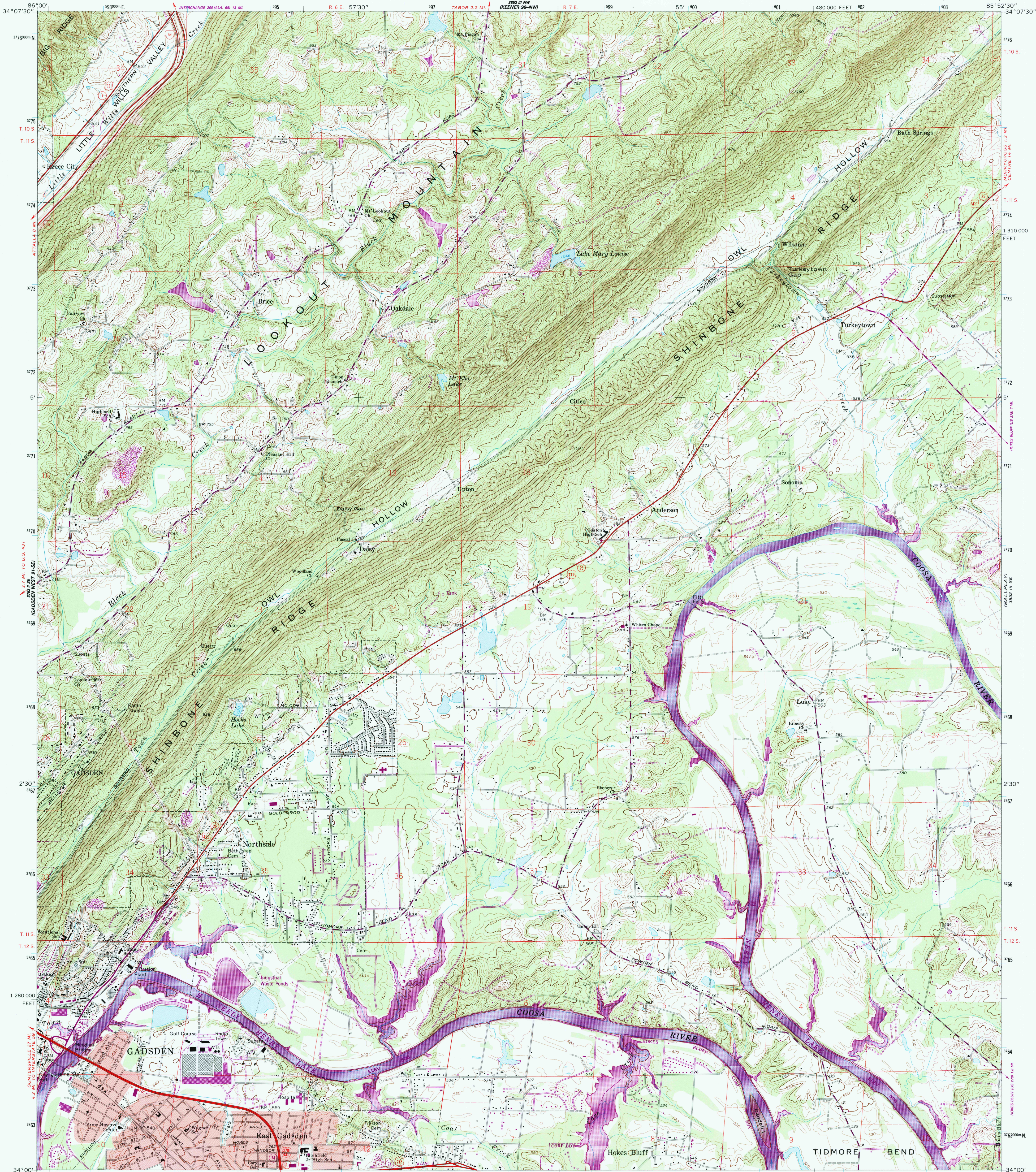


UNITED STATES  
DEPARTMENT OF THE INTERIOR  
GEOLOGICAL SURVEY

GADSDEN EAST QUADRANGLE  
ALABAMA—ETOWAH CO.  
7.5 MINUTE SERIES (TOPOGRAPHIC)

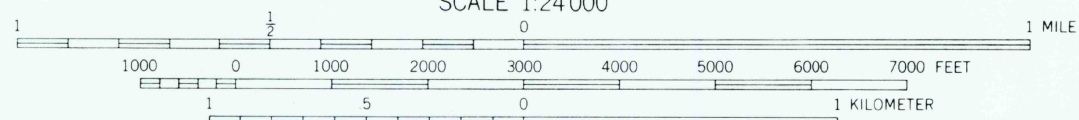
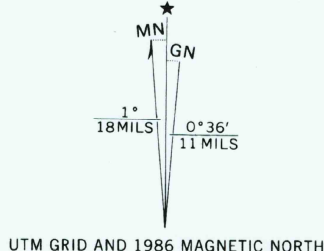


Mapped, edited, and published by the Geological Survey  
Control by USGS, NOS/NOAA, TVA, and Alabama Power Company

Topography by photogrammetric methods from aerial  
photographs taken 1965. Field checked 1967

Polyconic projection. 10,000-foot grid ticks based on  
Alabama coordinate system, east zone  
1000-meter Universal Transverse Mercator grid ticks,  
zone 16, shown in blue. 1927 North American Datum.  
To place on the predicted North American Datum 1983  
move the projection lines 9 meters south and  
3 meters west as shown by dashed corner ticks

Fine red dashed lines indicate selected fence and field lines where  
generally visible on aerial photographs. This information is unchecked  
Red tint indicates area in which only landmark buildings are shown



THIS MAP COMPLIES WITH NATIONAL MAP ACCURACY STANDARDS  
FOR SALE BY U.S. GEOLOGICAL SURVEY, DENVER, COLORADO 80225, OR RESTON, VIRGINIA 22092  
A FOLDER DESCRIBING TOPOGRAPHIC MAPS AND SYMBOLS IS AVAILABLE ON REQUEST



Revisions shown in purple and woodland compiled by  
the Tennessee Valley Authority from aerial photographs  
taken 1981 and other sources. This information not  
field checked. Map edited 1986

ROAD CLASSIFICATION	
Primary highway, all weather, hard surface	Light-duty road, all weather, improved surface
Secondary highway, all weather, hard surface	Unimproved road, fair or dry weather
Interstate Route	U. S. Route
	State Route

GADSDEN EAST, ALA.  
34085-A8-TF-024

1967  
PHOTOREVISED 1986  
DMA 3852 III SW-SERIES V844

REC'D FILE COPY

FEB - 1988

USGS NHD HISTORICAL MAP