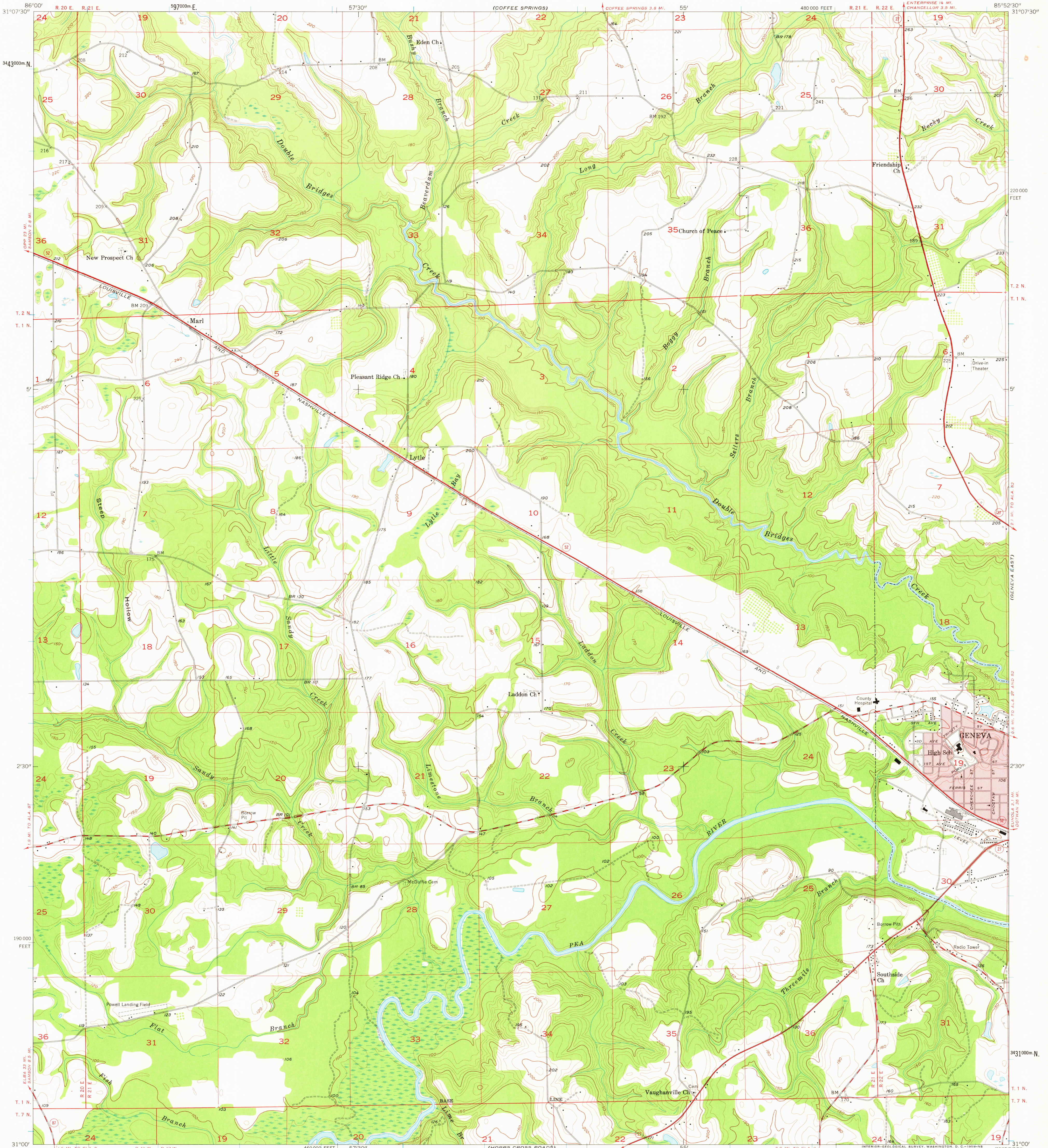


UNITED STATES
DEPARTMENT OF THE INTERIOR
GEOLOGICAL SURVEY

GENEVA WEST QUADRANGLE
ALABAMA—GENEVA CO.
7.5 MINUTE SERIES (TOPOGRAPHIC)

SW 1/4 GENEVA 15' QUADRANGLE
ENTERPRISE 14 MI.
CHANCELLOR 12.8 MI.

(BELLWOOD)



Mapped, edited, and published by the Geological Survey

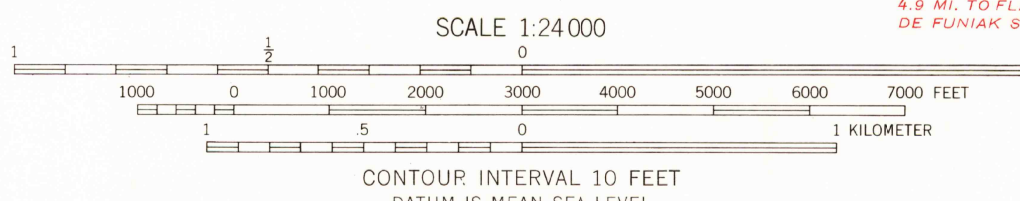
Control by USGS and USC&GS

Topography from aerial photographs by photogrammetric methods
Aerial photographs taken 1957. Field check 1957

Polyconic projection. 1927 North American datum
10,000-foot grid based on Alabama coordinate system, east zone
1000-meter Universal Transverse Mercator grid ticks,
zone 16, shown in blue

Red tint indicates area in which only
landmark buildings are shown

TRUE NORTH
MAGNETIC NORTH
APPROXIMATE MEAN
DECLINATION, 1957



THIS MAP COMPLIES WITH NATIONAL MAP ACCURACY STANDARDS
FOR SALE BY U. S. GEOLOGICAL SURVEY, WASHINGTON 25, D. C.
A FOLDER DESCRIBING TOPOGRAPHIC MAPS AND SYMBOLS IS AVAILABLE ON REQUEST



ROAD CLASSIFICATION
Heavy-duty ——— Light-duty ———
Medium-duty ——— Unimproved dirt ———
○ State Route

GENEVA WEST, ALA.
SW 1/4 GENEVA 15' QUADRANGLE
N 3100—W 8552.5/7.5

USGS
Historical File
Topographic Division

1957

SEP 28 1976
Feb 3 1958