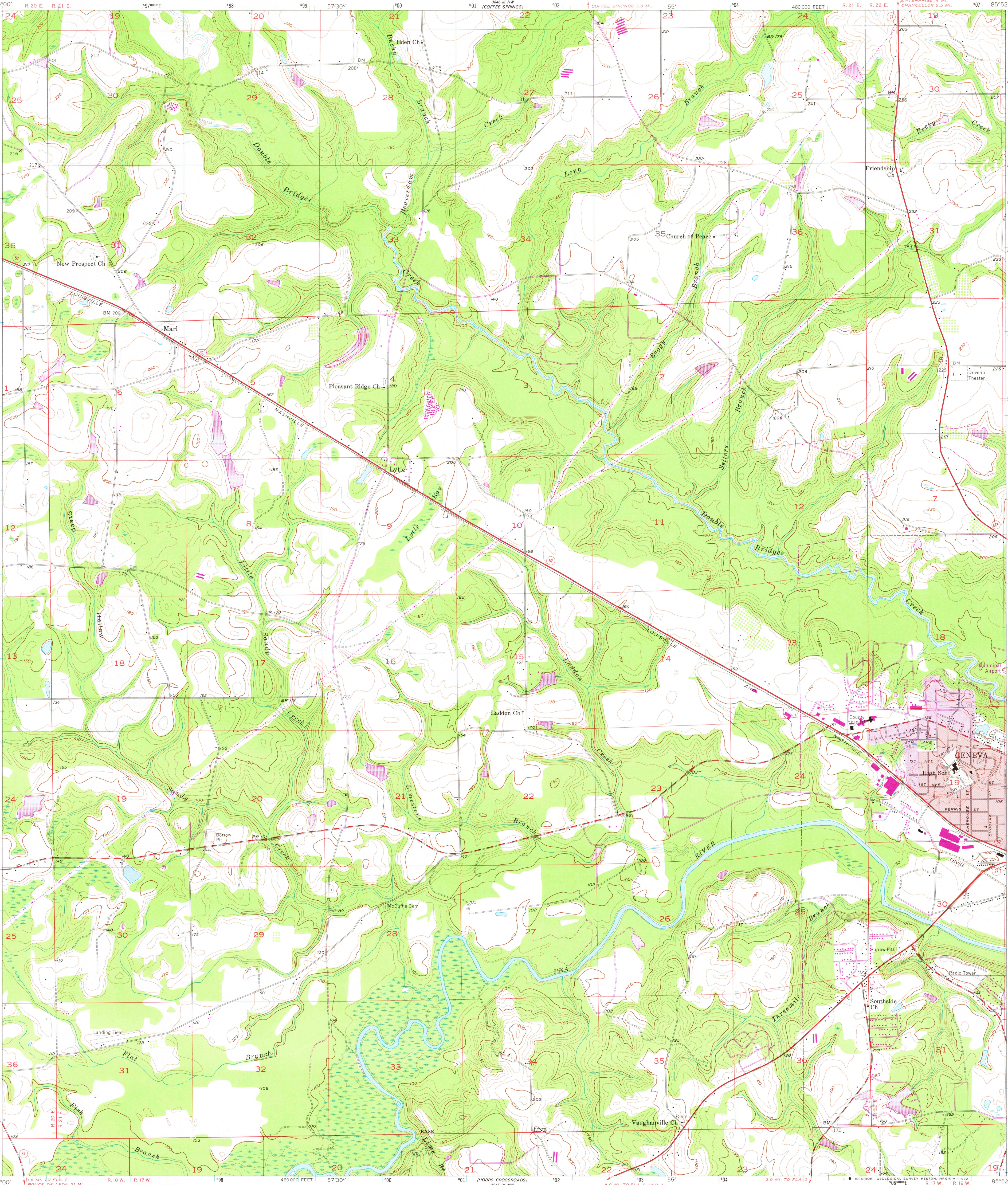


UNITED STATES  
DEPARTMENT OF THE INTERIOR  
GEOLOGICAL SURVEY

GENEVA WEST QUADRANGLE  
ALABAMA—GENEVA CO.  
7.5 MINUTE SERIES (TOPOGRAPHIC)



Mapped, edited, and published by the Geological Survey  
Control by USGS and NOS/NOAA  
Topography by photogrammetric methods from aerial photographs taken 1957. Field checked 1957.  
Polyconic projection. 10,000-foot grid based on Alabama coordinate system, east zone. 1000-meter Universal Transverse Mercator grid ticks, zone 16, shown in blue. 1927 North American Datum. To place on the predicted North American Datum 1983 move the projection lines 16 meters south and 6 meters west as shown by dashed corner ticks.  
Red tint indicates area in which only landmark buildings are shown.  
Revisions shown in purple compiled from aerial photographs taken 1979 and other sources.  
This information not field checked. Map edited 1981.  
Purple tint indicates extension of urban areas.

Scale 1:24,000  
CONTOUR INTERVAL 10 FEET  
NATIONAL GEODETIC VERTICAL DATUM OF 1929

THIS MAP COMPLIES WITH NATIONAL MAP ACCURACY STANDARDS  
FOR SALE BY U. S. GEOLOGICAL SURVEY, RESTON, VIRGINIA 22092  
A FOLDER DESCRIBING TOPOGRAPHIC MAPS AND SYMBOLS IS AVAILABLE ON REQUEST

ROAD CLASSIFICATION  
Primary highway, hard surface  
Secondary highway, hard surface  
Light-duty road, hard or improved surface  
Unimproved road  
Interstate Route  
U. S. Route  
State Route

GENEVA WEST, ALA.  
SW/4 GENEVA 15' QUADRANGLE  
N3100—W8552.5/7.5  
1957  
PHOTOREVISED 1981  
DMA 3846 III SW—SERIES V844

FEB 9 1982  
2487