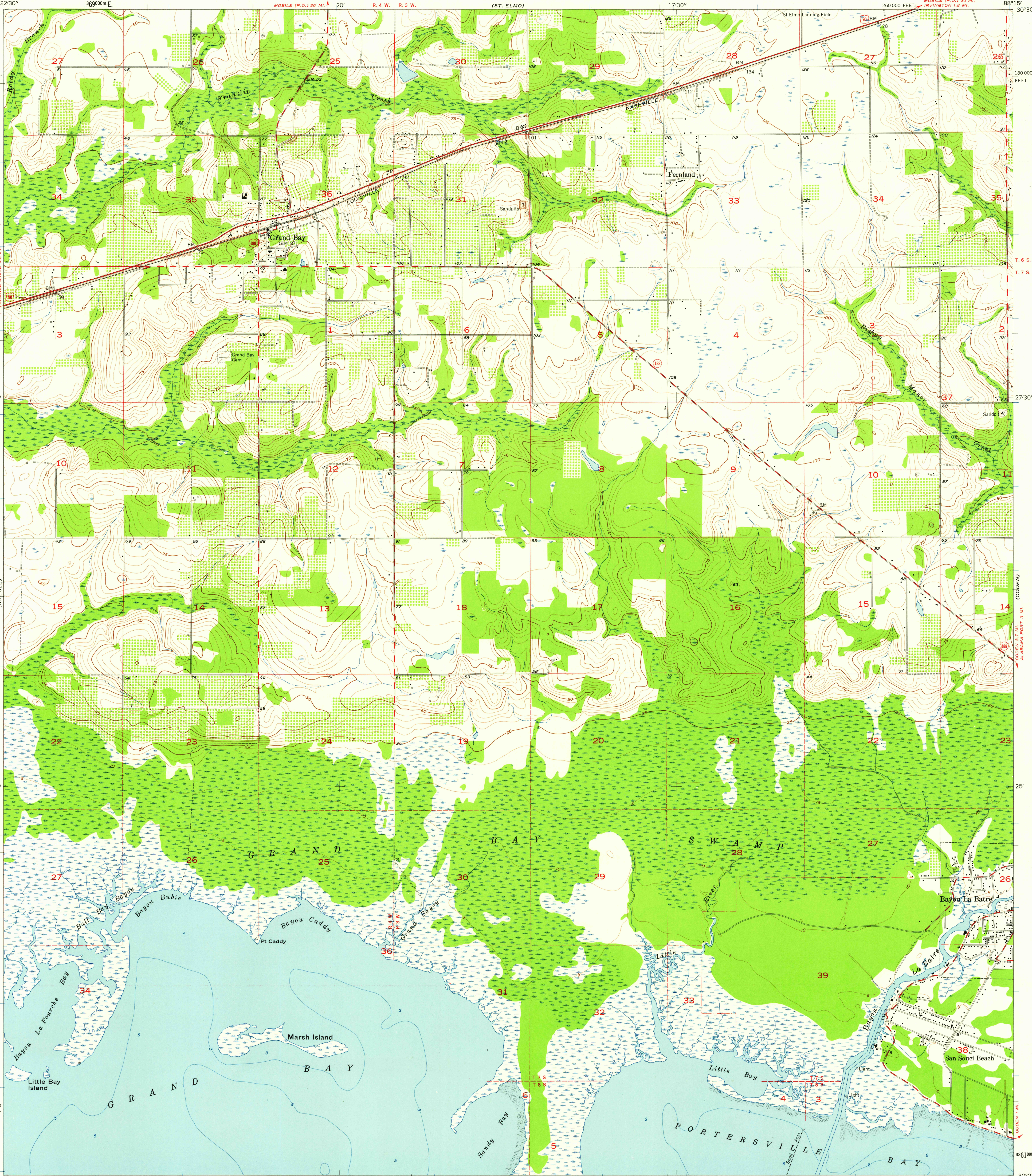


UNITED STATES
DEPARTMENT OF THE INTERIOR
GEOLOGICAL SURVEY

GRAND BAY QUADRANGLE
ALABAMA—MOBILE CO.
7.5 MINUTE SERIES (TOPOGRAPHIC)
NE 1/4 GRAND BAY 15' QUADRANGLE
MOBILE (P.O.) 25 MI.
IRVINGTON 1.8 MI.



Mapped, edited, and published by the Geological Survey
Control by USGS, USC&GS, and Alabama Geodetic Survey
Culture and drainage in part compiled from aerial photographs
taken 1952. Topography by planetable surveys 1958
Hydrography compiled from USC&GS chart 874 (1957)
Polyconic projection. 1927 North American datum
10,000-foot grid based on Alabama coordinate system, west zone
1000-meter Universal Transverse Mercator grid ticks,
zone 16, shown in blue
Dashed land lines indicate approximate locations

TRUE NORTH
MAGNETIC NORTH
APPROXIMATE MEAN
DECLINATION, 1958

SCALE 1:24,000
1 0 1000 2000 3000 4000 5000 6000 7000 FEET
1 0 5 10 KILOMETER
CONTOUR INTERVAL 5 FEET
DATUM IS MEAN SEA LEVEL
DEPTH CURVES AND SOUNDINGS IN FEET—DATUM IS MEAN LOW WATER
SHORELINE SHOWN REPRESENTS THE APPROXIMATE LINE OF MEAN HIGH WATER
THE MEAN RANGE OF TIDE IS APPROXIMATELY 2 FEET
THIS MAP COMPLIES WITH NATIONAL MAP ACCURACY STANDARDS
FOR SALE BY U. S. GEOLOGICAL SURVEY, WASHINGTON 25, D. C.
A FOLDER DESCRIBING TOPOGRAPHIC MAPS AND SYMBOLS IS AVAILABLE ON REQUEST

USGS
Historical File
Topographic Division
ROAD CLASSIFICATION
Heavy-duty ——— Light-duty ———
Medium-duty ——— Unimproved dirt ———
U. S. Route ——— State Route ———
U.S.G.S.
FILE COPY
TOPOGRAPHIC DIVISION
HISTORICAL
GRAND BAY, ALA.
NE 1/4 GRAND BAY 15' QUADRANGLE
N 3022.5—W 8815/7.5
1958
MAY 26 1959
2325