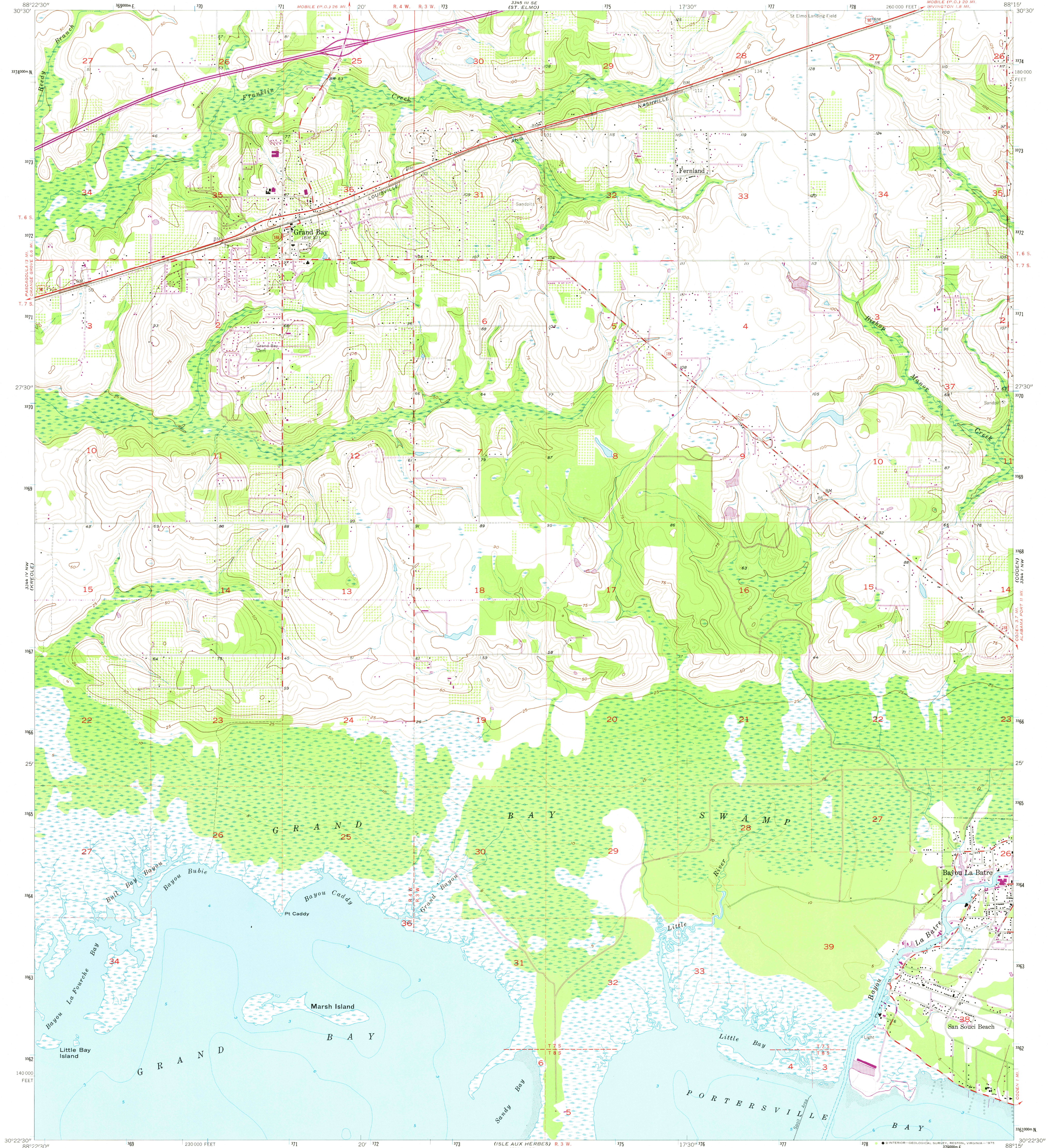
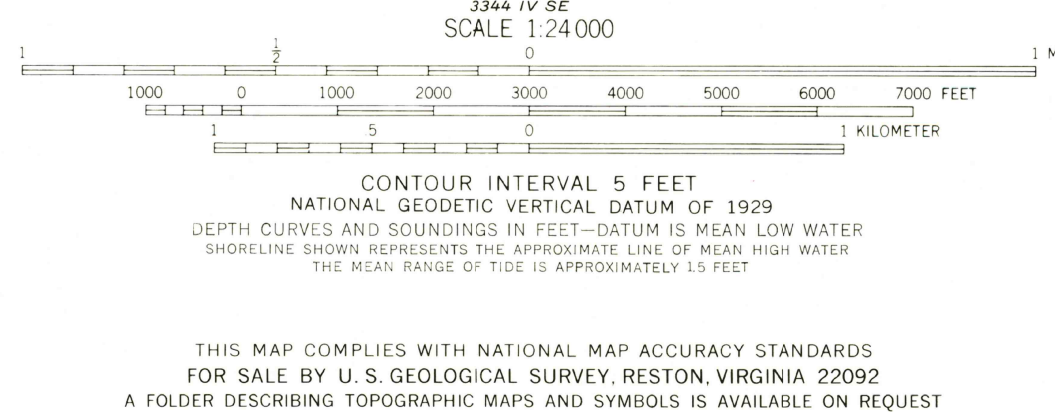
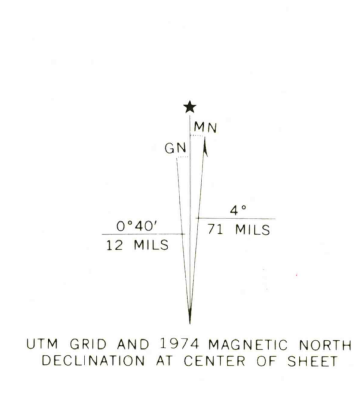


UNITED STATES
DEPARTMENT OF THE INTERIOR
GEOLOGICAL SURVEY

GRAND BAY QUADRANGLE
ALABAMA—MOBILE CO.
7.5 MINUTE SERIES (TOPOGRAPHIC)
NE 1/4 GRAND BAY 15' QUADRANGLE



Mapped, edited, and published by the Geological Survey
Control by USGS, USC&GS, and Alabama Geodetic Survey
Culture and drainage in part compiled from aerial photographs
taken 1952. Topography by planetable surveys 1958
Hydrography compiled from USC&GS chart 874 (1957)
Polyconic projection. 1927 North American datum
10,000-foot grid based on Alabama coordinate system, west zone
1000-meter Universal Transverse Mercator grid ticks,
zone 16, shown in blue
Dashed land lines indicate approximate locations
Revisions shown in purple compiled from aerial
photographs taken 1974. This information not field checked



ROAD CLASSIFICATION

Heavy-duty	Light-duty
Medium-duty	Unimproved dirt
U.S. Route	State Route

GRAND BAY, ALA.
NE 1/4 GRAND BAY 15' QUADRANGLE
N 3022.5—W 8815/7.5
1958
PHOTOREVISED 1974
AMS 3344 IV NE—SERIES V844

2700
APR 10 1975