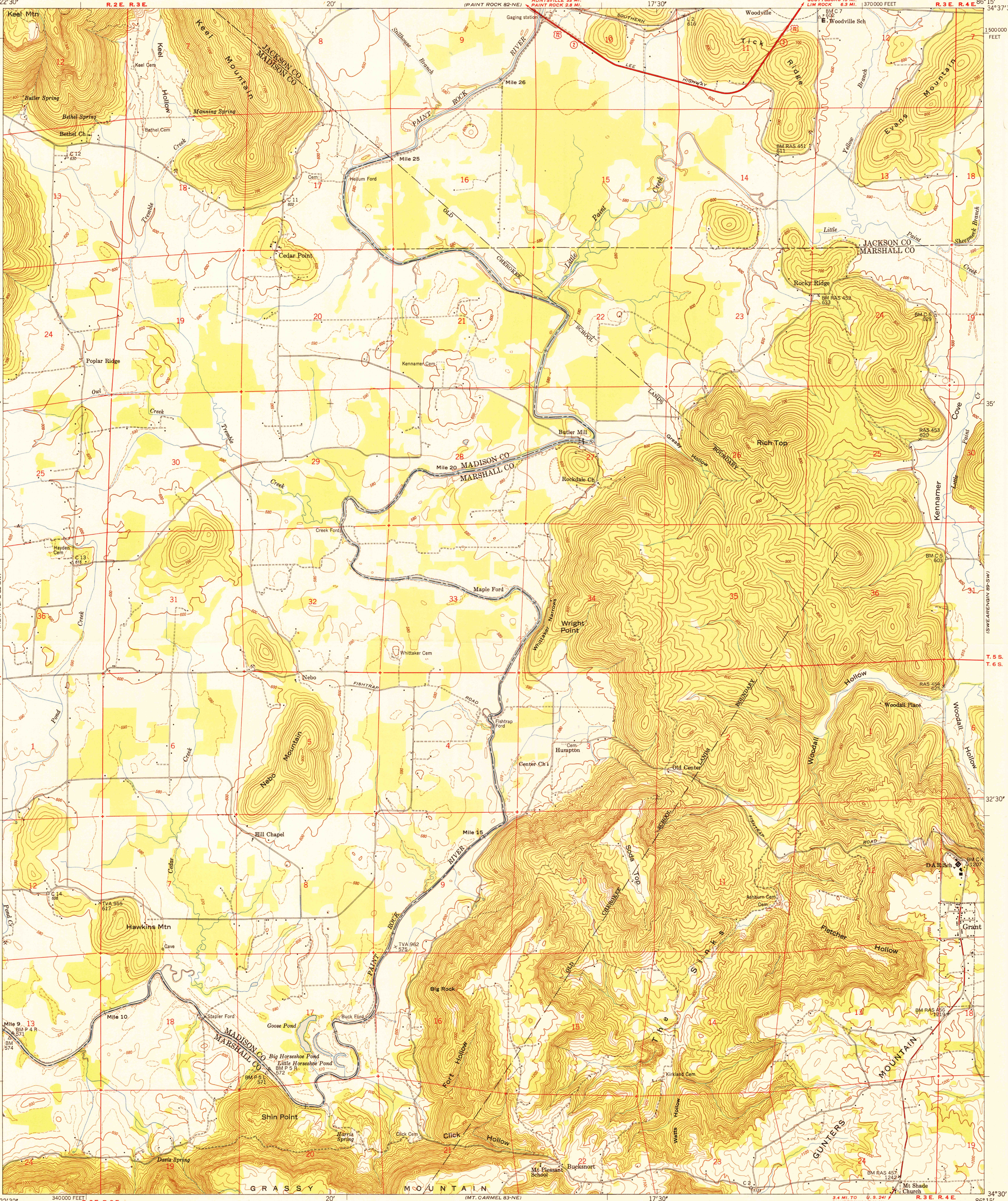


UNITED STATES  
DEPARTMENT OF THE INTERIOR  
GEOLOGICAL SURVEY

FILE COPY  
Interpretation and Editing

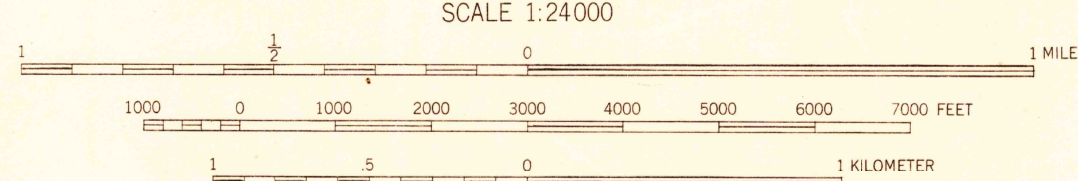
UNITED STATES  
TENNESSEE VALLEY AUTHORITY  
MAPS AND SURVEYS BRANCH

GRANT QUADRANGLE  
ALABAMA  
7.5 MINUTE SERIES (TOPOGRAPHIC) 82-SE



Maped and edited by Tennessee Valley Authority  
Published by the Geological Survey  
Control by USC&GS, USGS, and TVA  
Topography by USGS and TVA by multiplex and planetable  
methods from aerial photographs taken 1946.  
Field examination by TVA, 1947  
Polyconic projection, 1927 North American datum  
10,000-foot grid based on Alabama (East) rectangular  
coordinate system

TRUE NORTH  
MAGNETIC NORTH  
APPROXIMATE MEAN  
DECLINATION 1947



CONTOUR INTERVAL 20 FEET  
DASHED LINES REPRESENT HALF-INTERVAL CONTOURS  
DATUM IS MEAN SEA LEVEL

THIS MAP COMPLIES WITH NATIONAL MAP ACCURACY STANDARDS  
FOR SALE BY U. S. GEOLOGICAL SURVEY, WASHINGTON 25, D. C.  
AND BY U. S. TENNESSEE VALLEY AUTHORITY, CHATTANOOGA OR KNOXVILLE, TENN.  
A FOLDER DESCRIBING TOPOGRAPHIC MAPS AND SYMBOLS IS AVAILABLE ON REQUEST

USGS  
Historical File  
Topographic Division

ROUTES USUALLY TRAVELED  
HARD, IMPERVIOUS SURFACES  
OTHER SURFACE IMPROVEMENTS  
U. S. ROUTE  
STATE ROUTE

GRANT, ALA.  
N3430-W8615/7.5

PRINTED 1950

FILE COPY  
Interpretation and Editing

HISTORICAL  
SEP 11 1950 2120