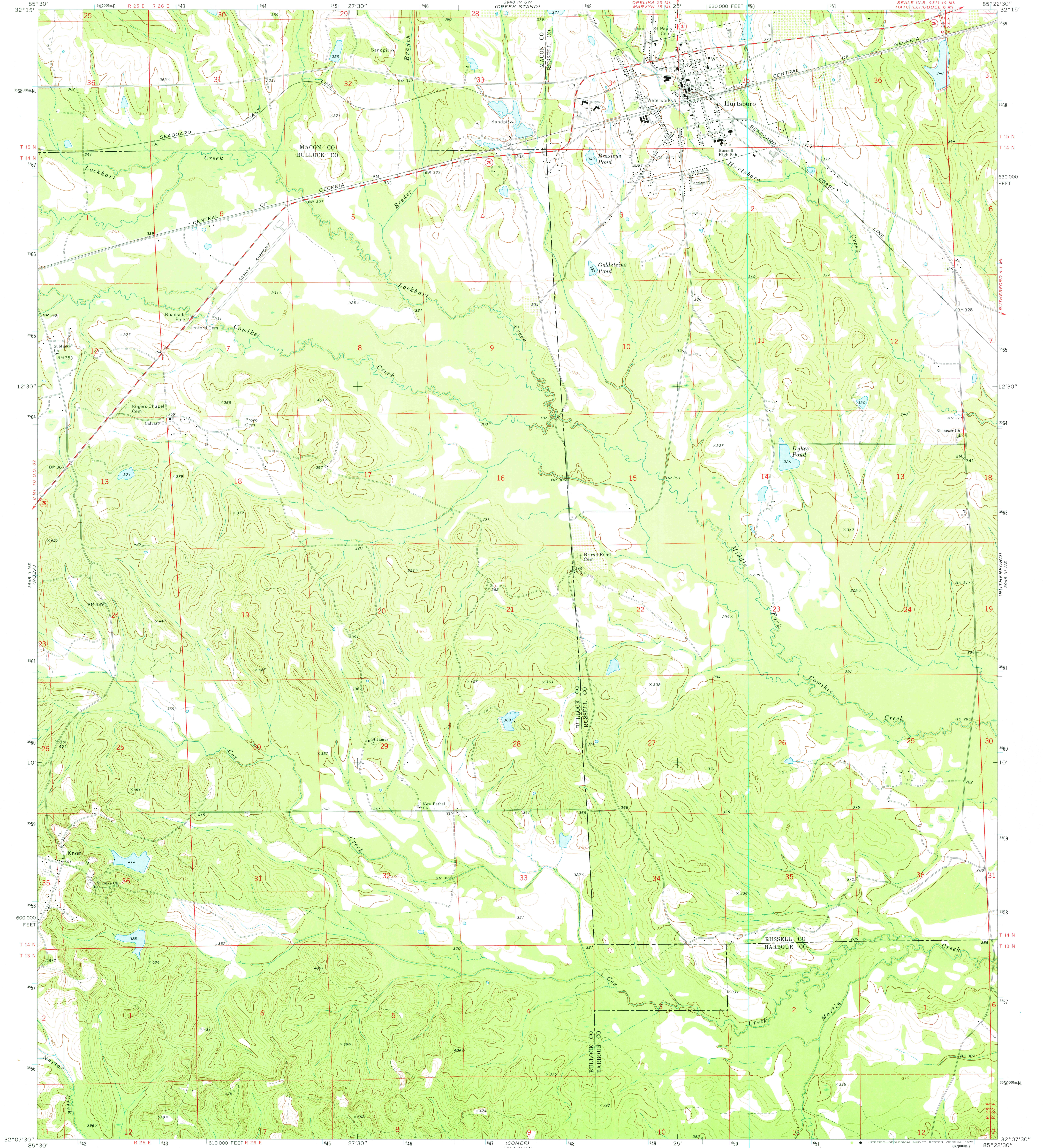
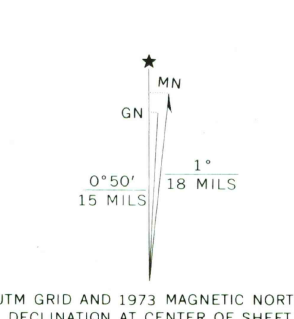


UNITED STATES  
DEPARTMENT OF THE INTERIOR  
GEOLOGICAL SURVEY

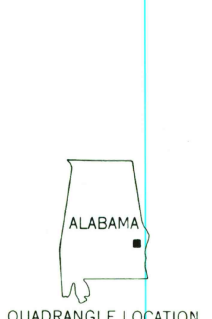
HURTSBORO QUADRANGLE  
ALABAMA  
7.5 MINUTE SERIES (TOPOGRAPHIC)



Mapped, edited, and published by the Geological Survey  
Control by USGS and NOS/NOAA  
Topography by photogrammetric methods from aerial  
photographs taken 1972. Field checked 1973  
Projection and 10,000-foot grid ticks: Alabama coordinate  
system, east zone (transverse Mercator)  
1000-metre Universal Transverse Mercator grid ticks,  
zone 16, shown in blue. 1927 North American datum  
Fine red dashed lines indicate selected fence and field lines where  
generally visible on aerial photographs. This information is unchecked



CONTOUR INTERVAL 10 FEET  
NATIONAL GEODETIC VERTICAL DATUM OF 1929



ROAD CLASSIFICATION  
Primary highway, hard surface ——— Light-duty road, hard or improved surface  
Secondary highway, hard surface ——— Unimproved road  
Interstate Route ——— U.S. Route ——— State Route

THIS MAP COMPLIES WITH NATIONAL MAP ACCURACY STANDARDS  
FOR SALE BY U.S. GEOLOGICAL SURVEY, RESTON, VIRGINIA 22092  
A FOLDER DESCRIBING TOPOGRAPHIC MAPS AND SYMBOLS IS AVAILABLE ON REQUEST

USGS  
HISTORICAL FILE  
TOPOGRAPHIC DIVISION

HURTSBORO, ALA.  
N3207.5-W8522.5/7.5  
1973

AMS 3948 III NW—SERIES V844

FEB 02 1976