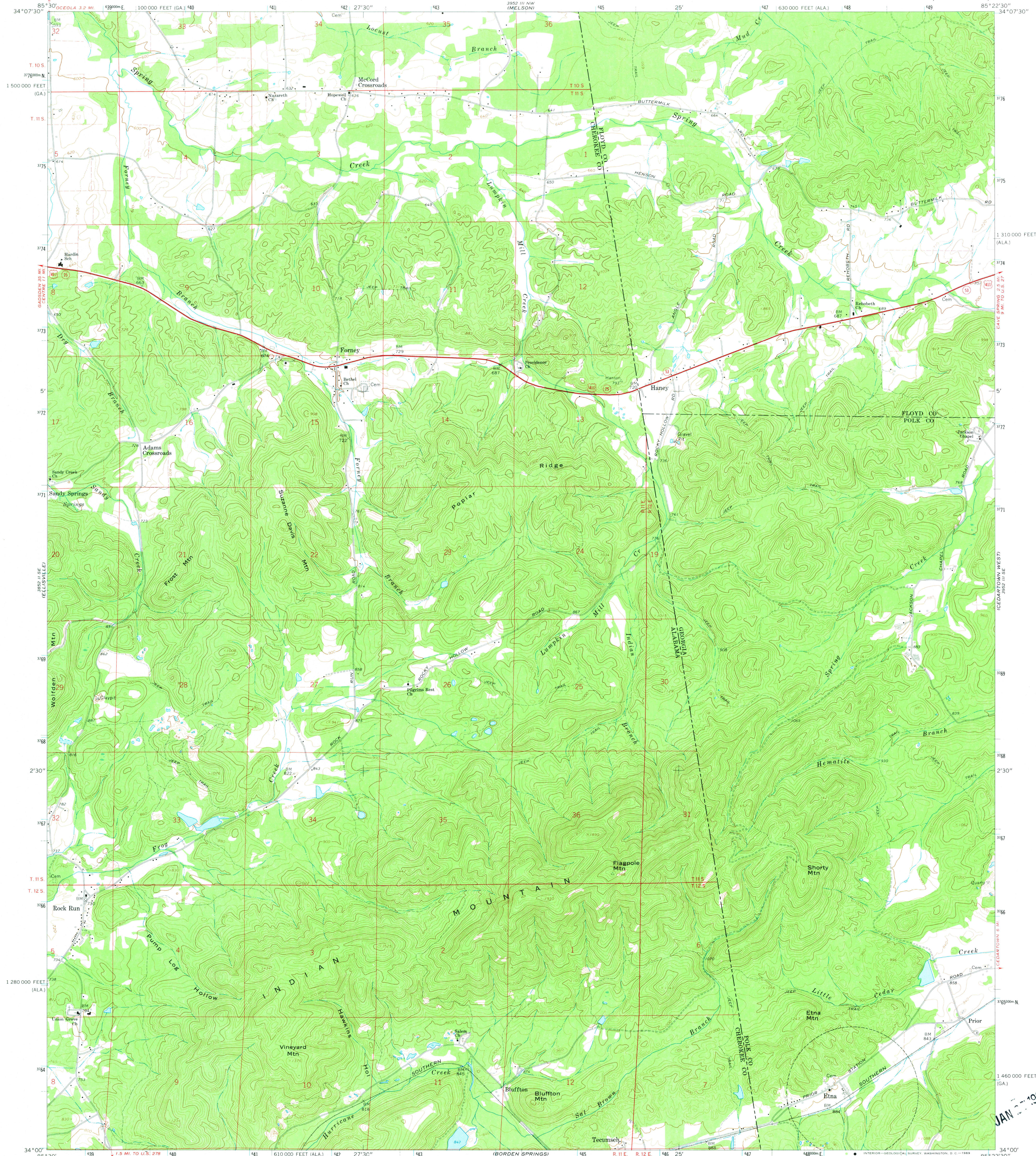
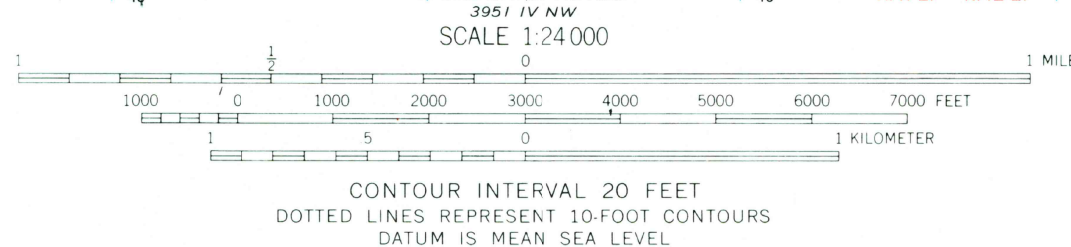
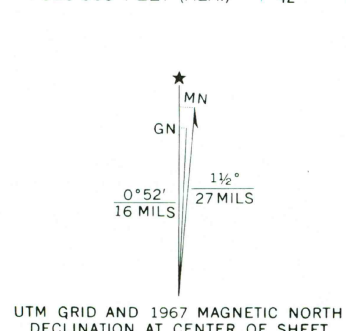


UNITED STATES
DEPARTMENT OF THE INTERIOR
GEOLOGICAL SURVEY

INDIAN MOUNTAIN QUADRANGLE
ALABAMA-GEORGIA
7.5 MINUTE SERIES (TOPOGRAPHIC)



Mapped, edited, and published by the Geological Survey
Control by USGS, USC&GS, USCE, U.S. Soil Conservation Service,
and Georgia Geodetic Survey
Topography by photogrammetric methods from aerial photographs
taken 1964. Field checked 1967
Polyconic projection. 1927 North American datum
10,000-foot grids based on Alabama coordinate system, east zone
and Georgia coordinate system, west zone
1000-meter Universal Transverse Mercator grid ticks,
zone 16, shown in blue
Fine red dashed lines indicate selected fence and field lines where
generally visible on aerial photographs. This information is unchecked
Map photoinspected 1976
No major culture or drainage changes observed



THIS MAP COMPLIES WITH NATIONAL MAP ACCURACY STANDARDS
FOR SALE BY U.S. GEOLOGICAL SURVEY, WASHINGTON, D.C. 20242
A FOLDER DESCRIBING TOPOGRAPHIC MAPS AND SYMBOLS IS AVAILABLE ON REQUEST



ROAD CLASSIFICATION
Primary highway, all weather, Light-duty road, all weather,
hard surface improved surface
Unimproved road, fair or dry
weather
U.S. Route State Route

INDIAN MOUNTAIN, ALA.-GA.
N3400-W8522.5/7.5
PHOTOINSPECTED 1976
1967
AMS 3952 III SW-SERIES V844

RETURN TO:
NHD HISTORICAL MAP ARCHIVES
USGS NATIONAL CENTER, MS-522
RESTON, VA 22092

JAN 1982

1300