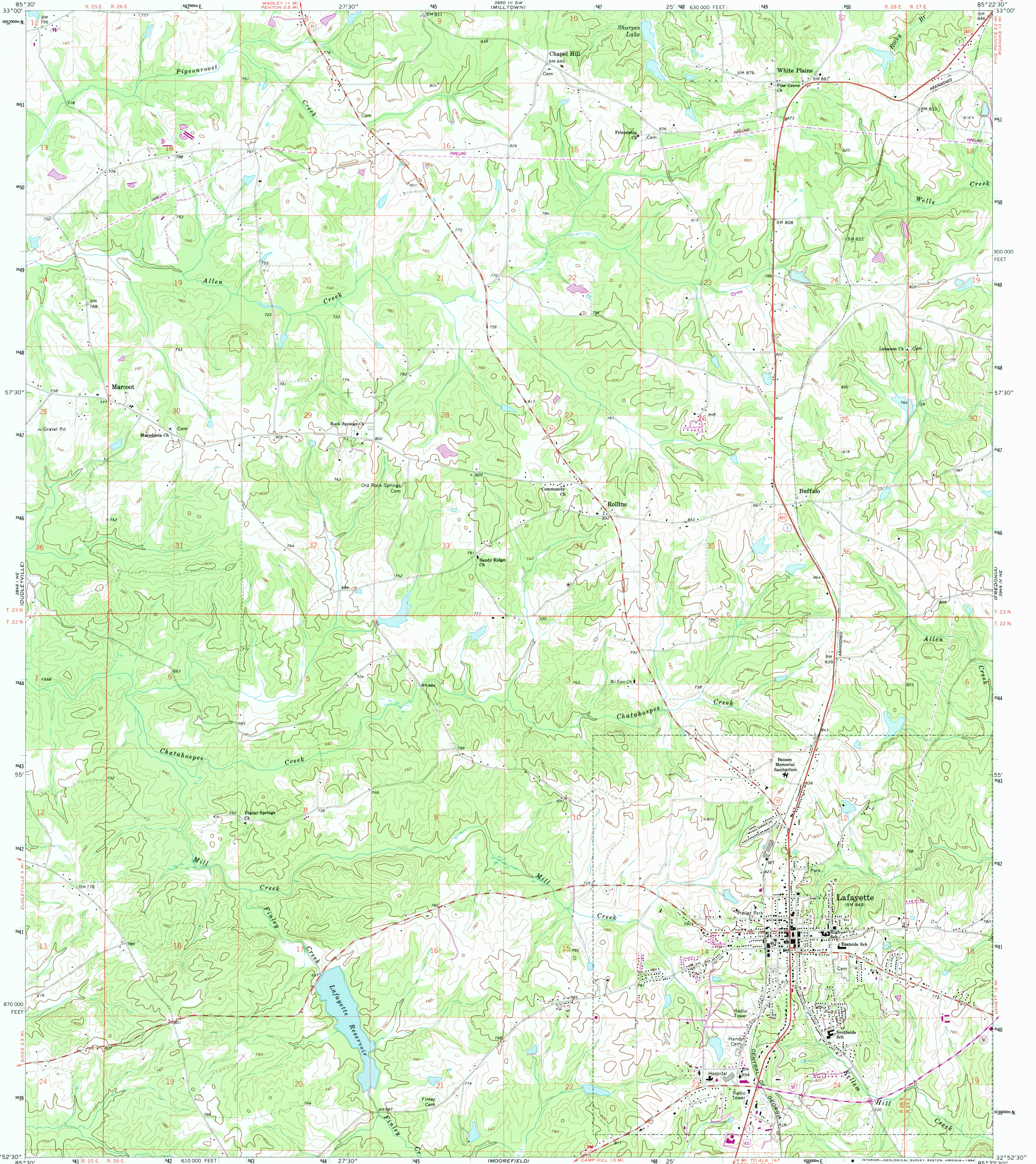


UNITED STATES  
DEPARTMENT OF THE INTERIOR  
GEOLOGICAL SURVEY

LAFAYETTE QUADRANGLE  
ALABAMA—CHAMBERS CO.  
7.5 MINUTE SERIES (TOPOGRAPHIC)



Mapped, edited, and published by the Geological Survey

Control by USGS and NOS/NOAA

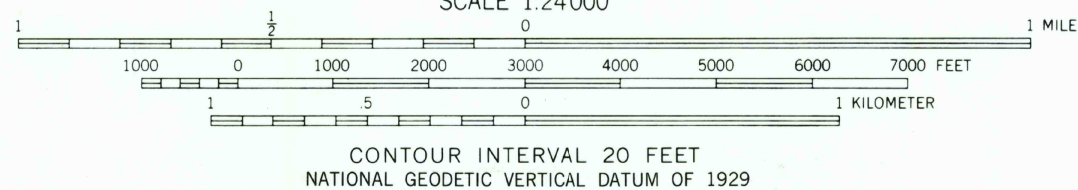
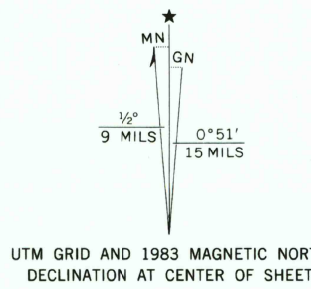
Topography by photogrammetric methods from aerial photographs taken 1969. Field checked 1971

Polyconic projection. 10,000-foot grid ticks based on Alabama coordinate system, east zone. 1000-meter Universal Transverse Mercator grid ticks, zone 16, shown in blue 1927 North American Datum

To place on the predicted North American Datum 1983 move the projection lines 11 meters south and 5 meters west as shown by dashed corner ticks

Fine red dashed lines indicate selected fence and field lines where generally visible on aerial photographs. This information is unchecked

Revisions shown in purple and woodland compiled from aerial photographs taken 1983 and other sources  
This information not field checked. Map edited 1983



THIS MAP COMPLIES WITH NATIONAL MAP ACCURACY STANDARDS  
FOR SALE BY U. S. GEOLOGICAL SURVEY, RESTON, VIRGINIA 22092  
A FOLDER DESCRIBING TOPOGRAPHIC MAPS AND SYMBOLS IS AVAILABLE ON REQUEST



ROAD CLASSIFICATION		
Primary highway, hard surface	Light-duty road, hard or improved surface	
Secondary highway, hard surface	Unimproved road	
Interstate Route	U. S. Route	State Route

RETURN TO:  
USGS AND HISTORICAL MAP ARCHIVES

LAFAYETTE, ALA.  
32085-H4-TF-024

1971  
PHOTOREVISED 1983  
DMA 3949 IV NW—SERIES V844