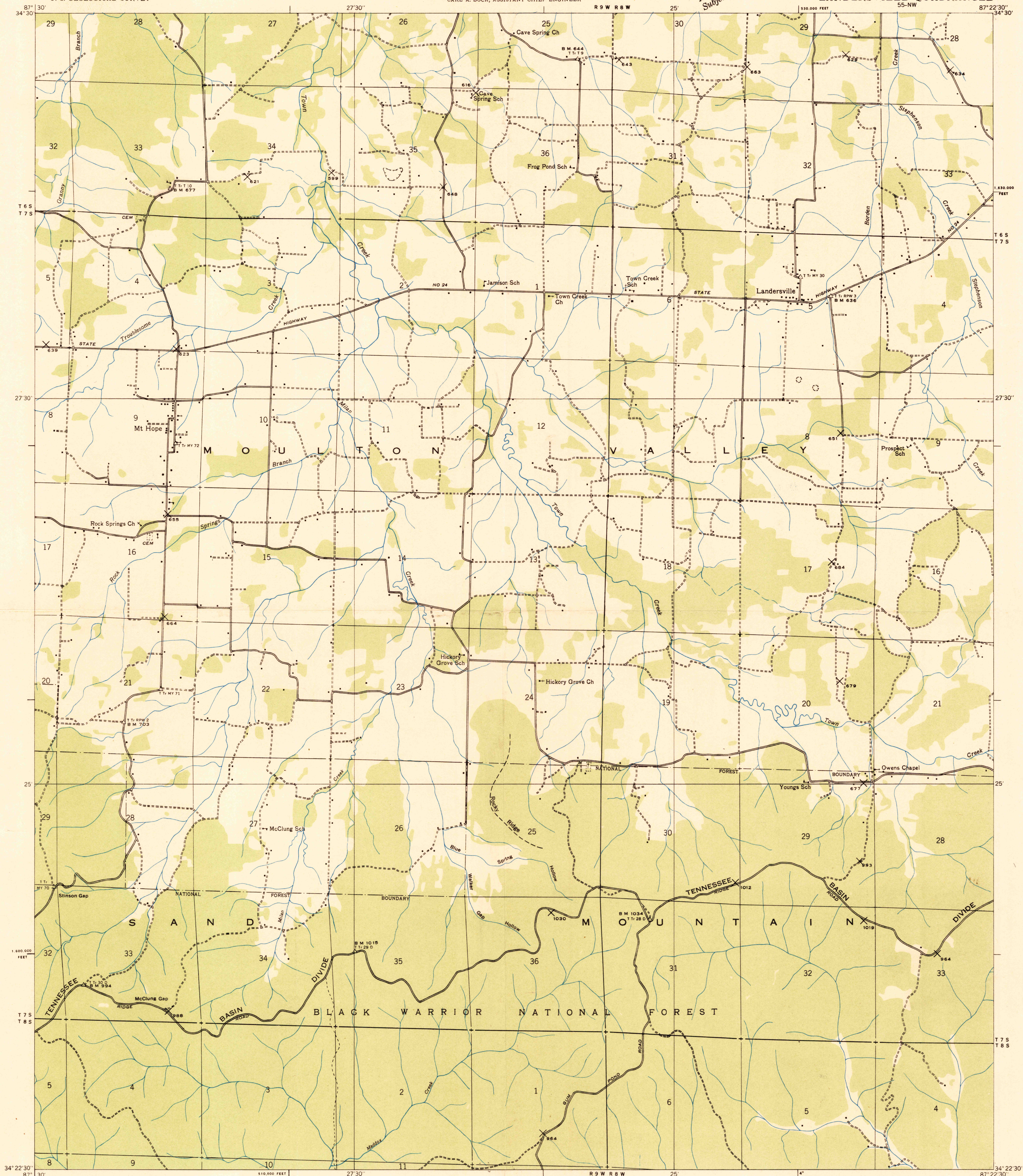


DEPARTMENT OF THE INTERIOR
U. S. GEOLOGICAL SURVEY

TENNESSEE VALLEY AUTHORITY
ARTHUR E. MORGAN, CHAIRMAN AND CHIEF ENGINEER
CARL A. BOCK, ASSISTANT CHIEF ENGINEER

ALABAMA
(LAWRENCE COUNTY)
LANDERSVILLE QUADRANGLE
55-NW

Advance sheet
Subject to correction



Albert Pike, Division Engineer
From map of Moulton quadrangle
Control by U. S. Geological Survey
Field examination in 1936
Forest boundary by U. S. Forest Service

Scale 24,000
5,000 0 5,000 10,000 Feet
Datum is mean sea level

Polyconic projection. 1927 North American datum
10,000 foot grid based on Alabama (West)
rectangular coordinate system
Ridge line
Trail
Sinks
Probable drainage
LANDERSVILLE, ALA. 55-NW
USGS
Historical File
Topographic Division