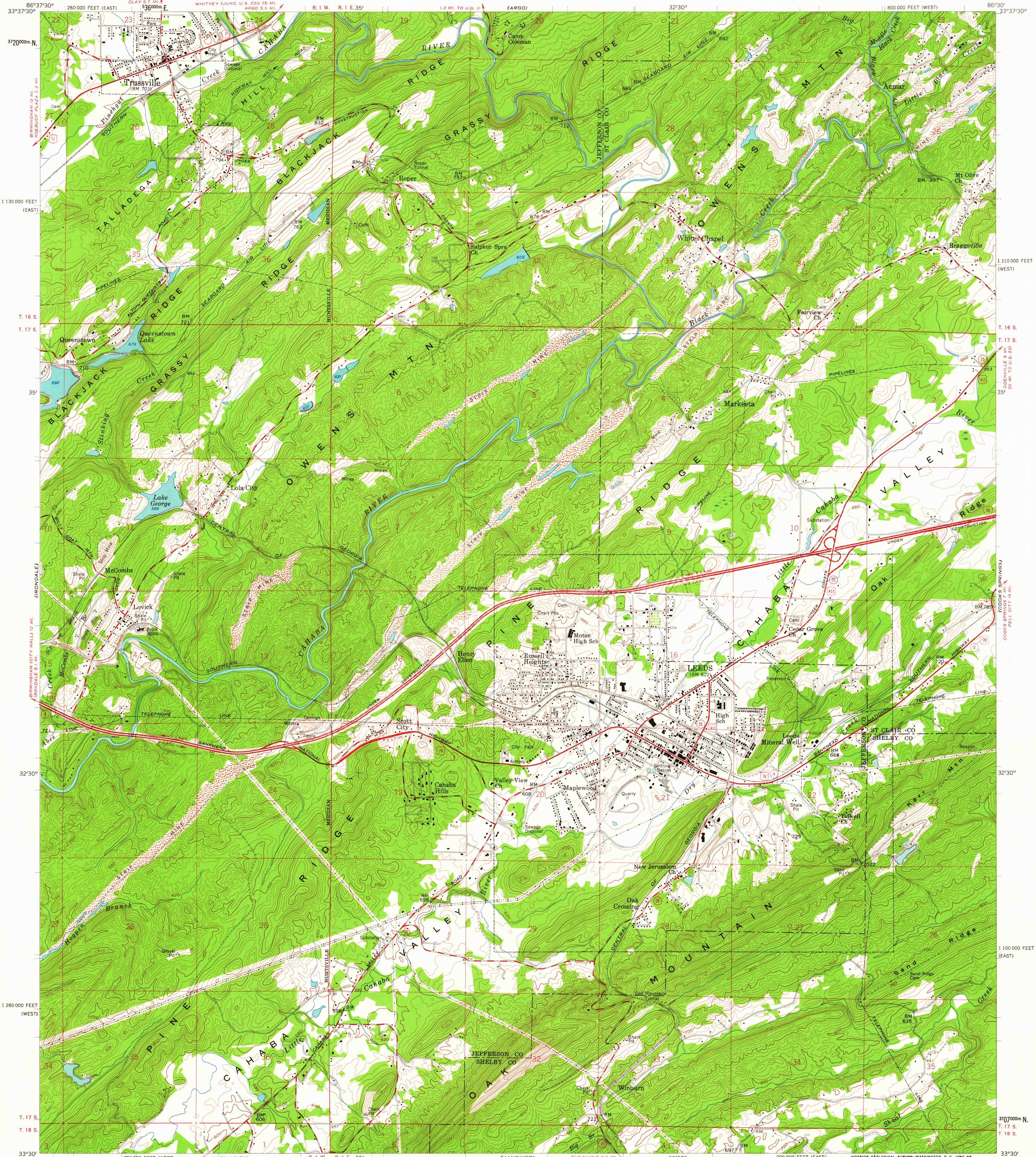


UNITED STATES  
DEPARTMENT OF THE INTERIOR  
GEOLOGICAL SURVEY

LEEDS QUADRANGLE  
ALABAMA  
7.5 MINUTE SERIES (TOPOGRAPHIC)  
SE 1/4 LEEDS 15' QUADRANGLE



Mapped, edited, and published by the Geological Survey  
Control by USGS and USC&GS  
Topography from aerial photographs by photogrammetric methods  
Aerial photographs taken 1957. Field check 1959  
Polyconic projection, 1927 North American datum  
10,000-foot grids based on Alabama coordinate system,  
west and east zones  
1000-meter Universal Transverse Mercator grid ticks,  
zone 16, shown in blue  
Unchecked elevations are shown in brown

TRUE NORTH  
MAGNETIC NORTH  
APPROXIMATE MEAN  
DECLINATION, 1959

SCALE 1:24,000  
1 0 1000 2000 3000 4000 5000 6000 7000 FEET  
1 0 1 2 3 4 5 6 7 8 9 10 KILOMETER  
CONTOUR INTERVAL 20 FEET  
DATUM IS MEAN SEA LEVEL

THIS MAP COMPLIES WITH NATIONAL MAP ACCURACY STANDARDS  
FOR SALE BY U. S. GEOLOGICAL SURVEY, WASHINGTON 25, D. C.  
A FOLDER DESCRIBING TOPOGRAPHIC MAPS AND SYMBOLS IS AVAILABLE ON REQUEST



ROAD CLASSIFICATION  
Heavy-duty ——— Light-duty ———  
Medium-duty ——— Unimproved dirt ———  
Interstate Route ——— U. S. Route ——— State Route ———  
USGS  
Historical File  
Topographic Division  
LEEDS, ALA.  
SE 1/4 LEEDS 15' QUADRANGLE  
N 3330—W 8630/7.5  
1959

U.S.G.S.  
FILE COPY  
TOPOGRAPHIC DIVISION  
HISTORICAL

JUL 11 1963  
Aug 2 1960

4520