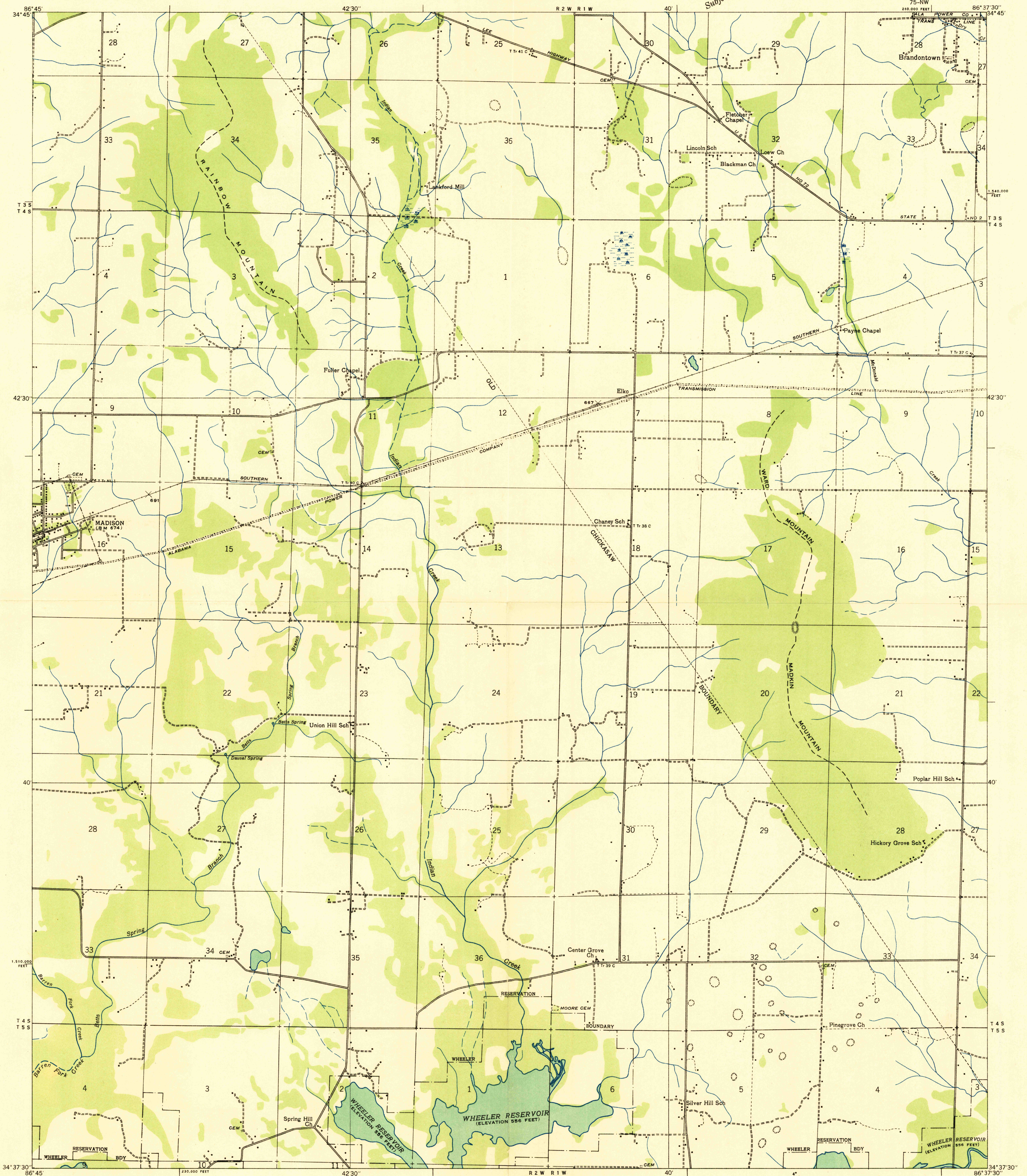
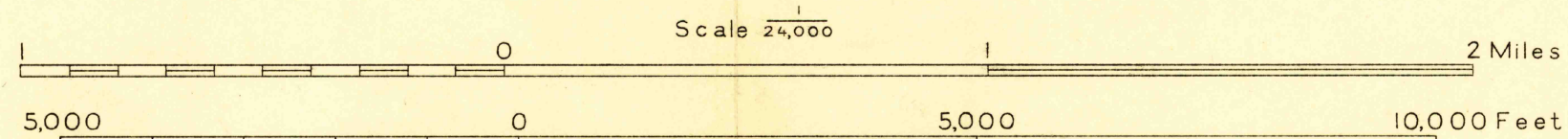


Advance sheet
Subject to correction



Albert Pike, Division Engineer
Compiled by U. S. Geological Survey from aerial photographs
Control by U. S. Geological Survey
Reservoir outline from surveys by the Tennessee Valley Authority
Field examination in 1936



Datum is mean sea level

APPROXIMATE MEAN
DECLINATION, 1936

USGS
Historical File
Topographic Division

Polyconic projection, 1927 North American datum
10,000 foot grid based on Alabama (East)
rectangular coordinate system

Ridge line
Trail
Sinks
Probable drainage
MADISON, ALA.
75-NW

HISTORICAL