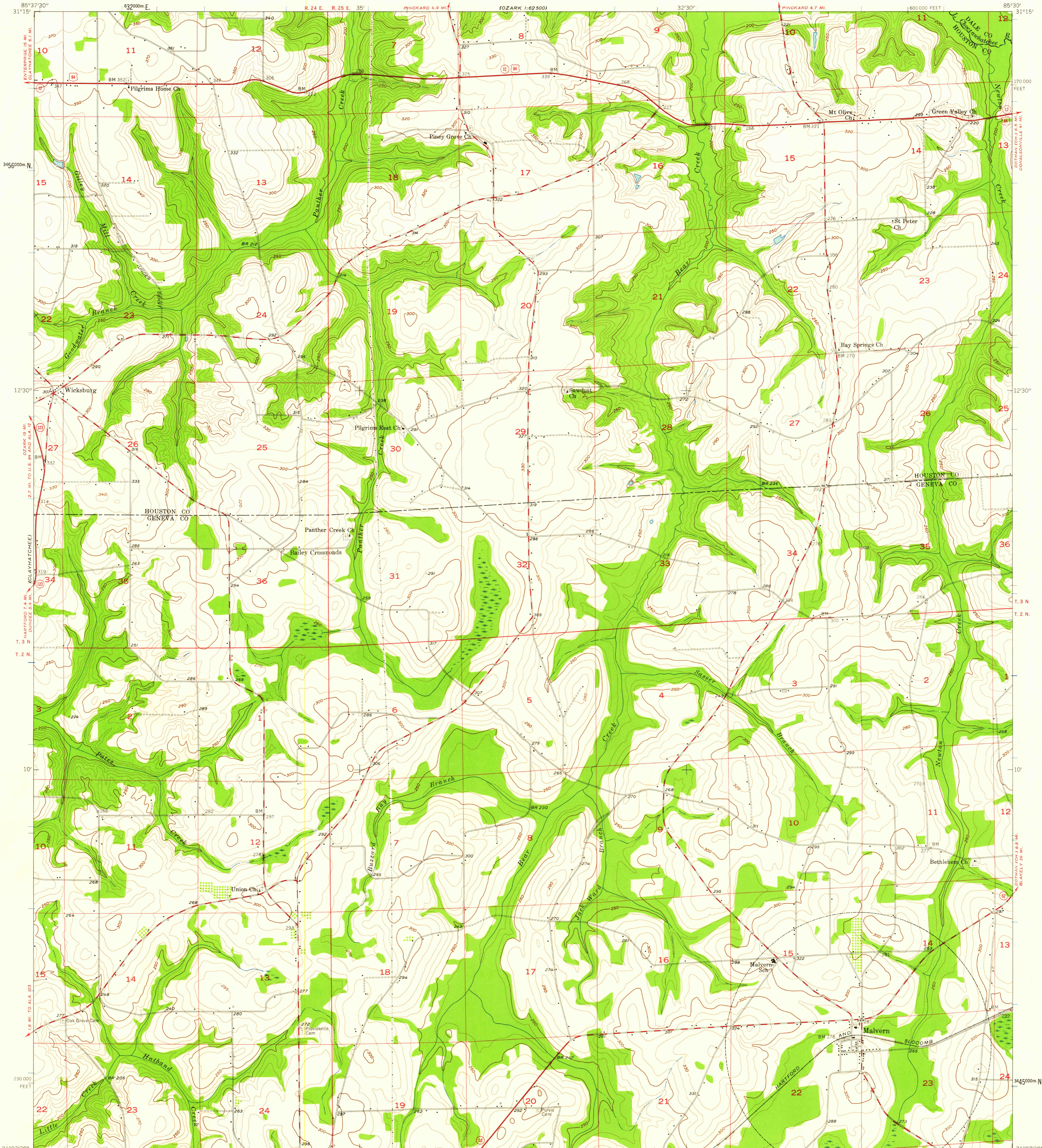


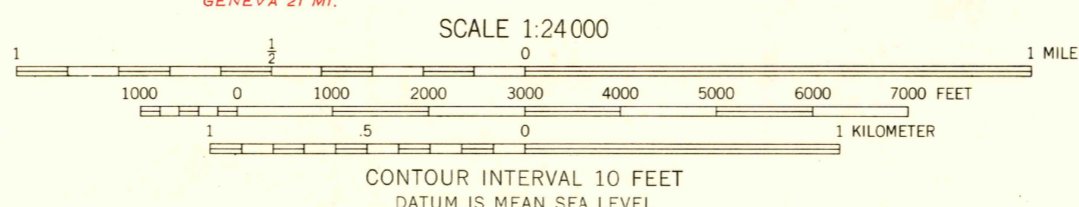
UNITED STATES
DEPARTMENT OF THE INTERIOR
GEOLOGICAL SURVEY

MALVERN QUADRANGLE
ALABAMA
7.5 MINUTE SERIES (TOPOGRAPHIC)
NE 1/4 HARTFORD 15' QUADRANGLE



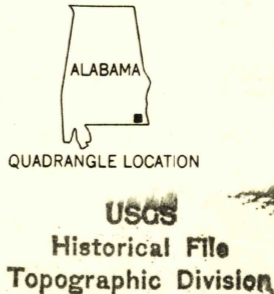
Mapped, edited, and published by the Geological Survey
Control by USGS and USC&GS
Topography from aerial photographs by photogrammetric methods
Aerial photographs taken 1957. Field check 1957
Polyconic projection. 1927 North American datum
10,000-foot grid based on Alabama coordinate system, east zone
1000-meter Universal Transverse Mercator grid ticks,
zone 16, shown in blue

TRUE NORTH
MAGNETIC NORTH
APPROXIMATE MEAN
DECLINATION, 1957



THIS MAP COMPLIES WITH NATIONAL MAP ACCURACY STANDARDS
FOR SALE BY U. S. GEOLOGICAL SURVEY, WASHINGTON 25, D. C.
A FOLDER DESCRIBING TOPOGRAPHIC MAPS AND SYMBOLS IS AVAILABLE ON REQUEST

ROAD CLASSIFICATION
Heavy-duty ——— Light-duty ———
Medium-duty ——— Unimproved dirt ———
U. S. Route ——— State Route ———



U.S.G.S.
FILE COPY
TOPOGRAPHIC DIVISION
HISTORICAL

MALVERN, ALA.
NE 1/4 HARTFORD 15' QUADRANGLE
N 3107.5 - W 8530.7.5

1957

JAN - 8 1959
2430