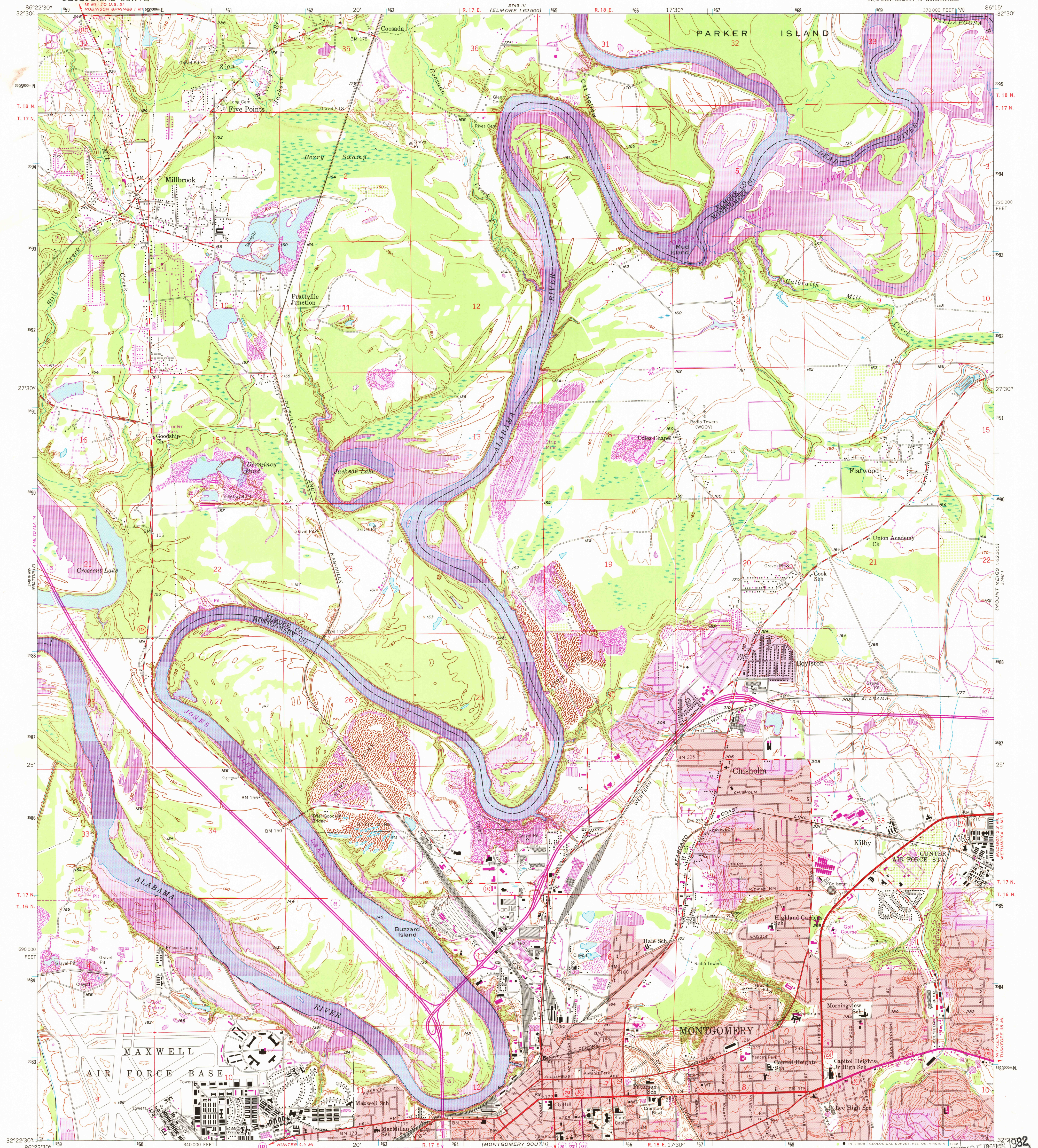


UNITED STATES
DEPARTMENT OF THE INTERIOR
GEOLOGICAL SURVEY

MONTGOMERY NORTH QUADRANGLE
ALABAMA
7.5 MINUTE SERIES (TOPOGRAPHIC)
NE 1/4 MONTGOMERY 15' QUADRANGLE



Mapped, edited, and published by the Geological Survey

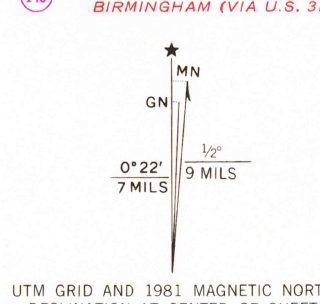
Control by USGS and NOS/NOAA

Topography by photogrammetric methods from aerial photographs taken 1955. Field checked 1958

Polyconic projection. 10,000-foot grid ticks based on Alabama coordinate system, east zone. 1000-meter Universal Transverse Mercator grid ticks, zone 16, shown in blue 1927 North American Datum. To place on the predicted North American Datum 1983 move the projection lines 12 meters south and 3 meters west as shown by dashed corner ticks

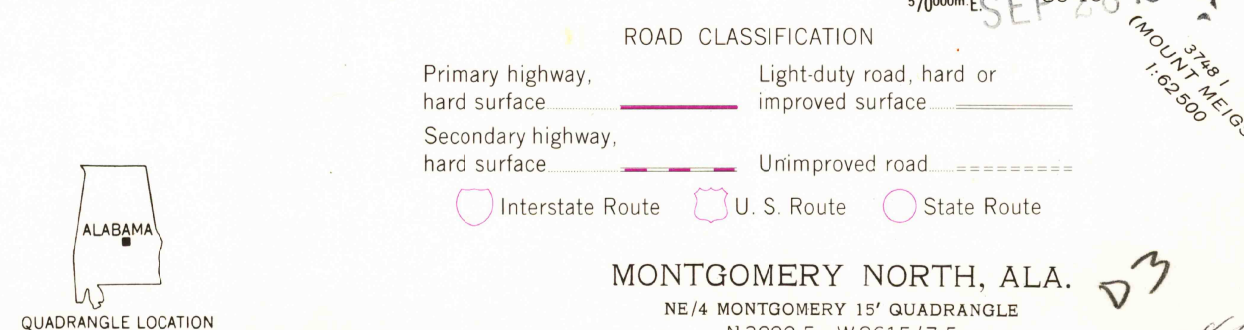
Red tint indicates areas in which only landmark buildings are shown. There may be private inholdings within the boundaries of the National or State reservations shown on this map

Revisions shown in purple and woodland compiled from aerial photographs taken 1979 and other sources. This information not field checked. Map edited 1981
Purple tint indicates extension of urban areas



SCALE 1:24,000
CONTOUR INTERVAL 10 FEET
NATIONAL GEODETIC VERTICAL DATUM OF 1929

THIS MAP COMPLIES WITH NATIONAL MAP ACCURACY STANDARDS
FOR SALE BY U. S. GEOLOGICAL SURVEY, RESTON, VIRGINIA 22092
A FOLDER DESCRIBING TOPOGRAPHIC MAPS AND SYMBOLS IS AVAILABLE ON REQUEST



MONTGOMERY NORTH, ALA.
NE 1/4 MONTGOMERY 15' QUADRANGLE
N 3222.5-W 8615.7/7.5

RETURN TO:
NHD HISTORICAL MAP ARCHIVES
USGS NATIONAL CENTER, MS-522
RESTON, VA 22092

1958
PHOTOREVISED 1981
DMA 3748 IV NE-SERIES V844