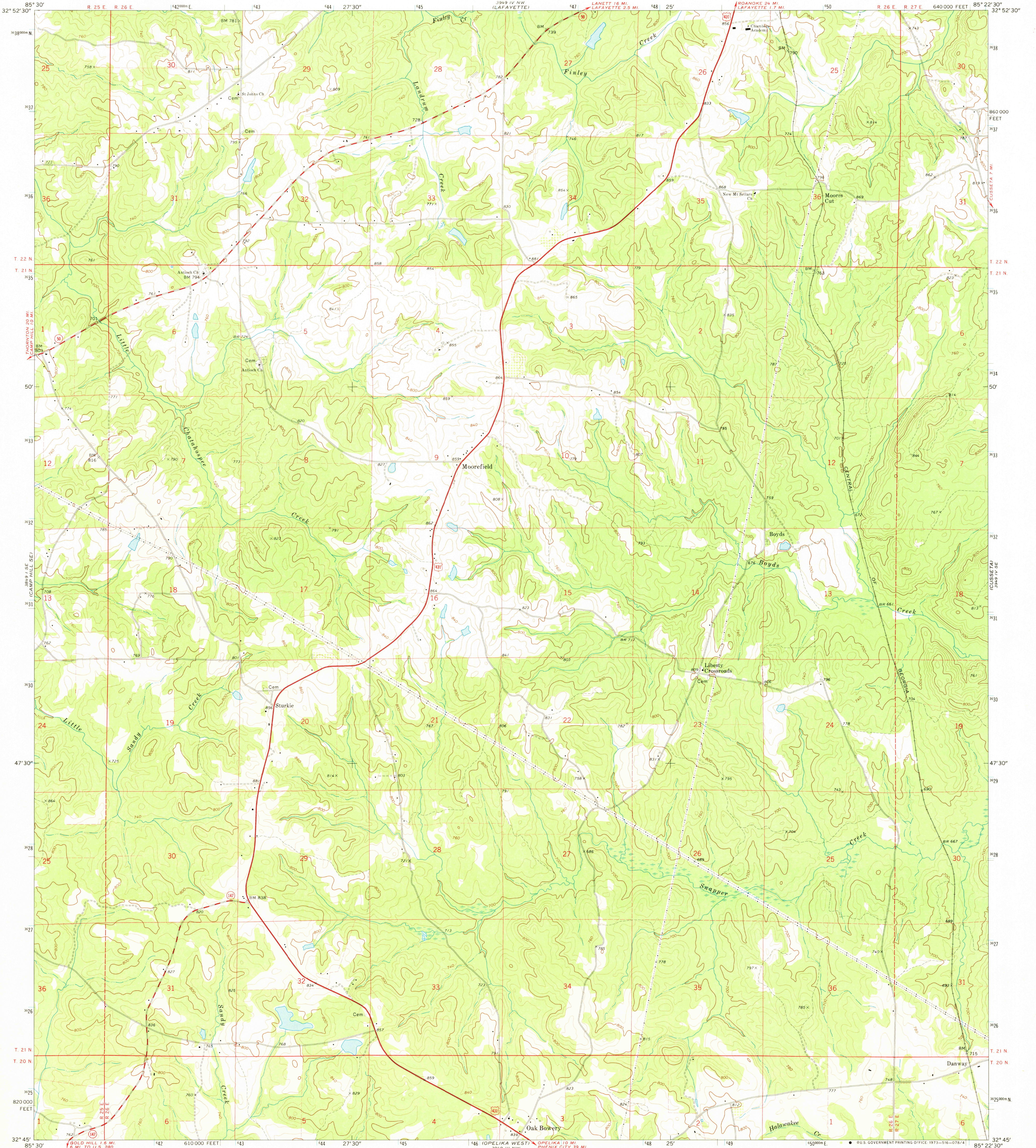


UNITED STATES
DEPARTMENT OF THE INTERIOR
GEOLOGICAL SURVEY

MOOREFIELD QUADRANGLE
ALABAMA—CHAMBERS CO.
7.5 MINUTE SERIES (TOPOGRAPHIC)



Mapped, edited, and published by the Geological Survey
Control by USGS and USC&GS
Topography by photogrammetric methods from aerial
photographs taken 1969. Field checked 1971
Polyconic projection. 1927 North American datum
10,000-foot grid based on Alabama coordinate system, east zone
1000-meter Universal Transverse Mercator grid ticks,
zone 16, shown in blue
Fine red dashed lines indicate selected fence and field lines where
generally visible on aerial photographs. This information is unchecked

UTM GRID AND 1971 MAGNETIC NORTH
DECLINATION AT CENTER OF SHEET

SCALE 1:24 000
CONTOUR INTERVAL 20 FEET
DATUM IS MEAN SEA LEVEL



ROAD CLASSIFICATION
Primary highway, hard surface
Secondary highway, hard surface
Light-duty road, hard or improved surface
Unimproved road
Interstate Route
U. S. Route
State Route

USGS
HISTORICAL FILE
TOPOGRAPHIC DIVISION

MOOREFIELD, ALA.
N3245-W8522.5/7.5

1971

AMS 3949 IV SW—SERIES V844