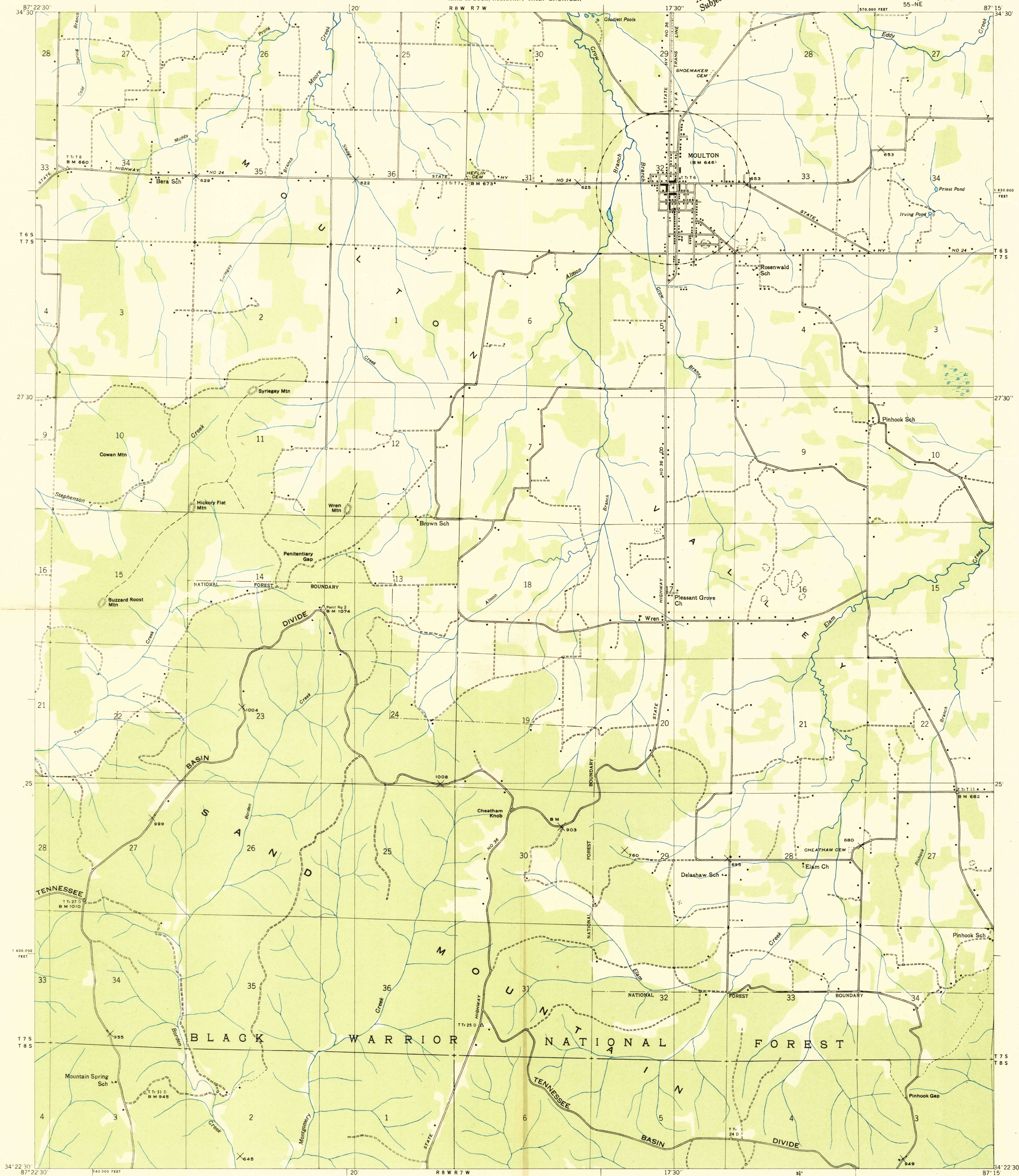
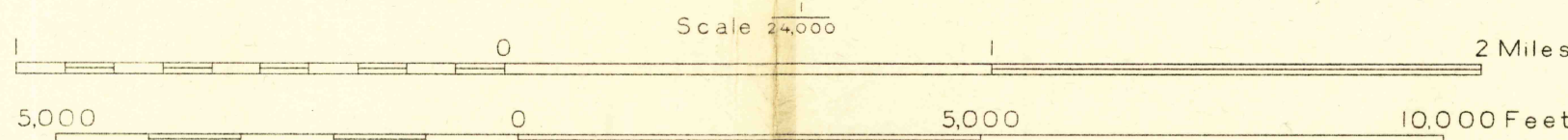


Advance sheet
Subject to correction



Albert Pike, Division Engineer
From map of Moulton quadrangle
Control by U. S. Geological Survey and U. S. Coast and Geodetic Survey
Field examination in 1935
Forest boundary by U. S. Forest Service



Datum is mean sea level

31°
TRUE NORTH
MAGNETIC NORTH
APPROXIMATE MEAN
DECLINATION, 1935

Polycyclic projection. 1927 North American datum
10,000 foot grid based on Alabama (West)
rectangular coordinate system

Ridge line
Trail
Sink

USGS
Historical File
Topographic Division

7½' MOULTON, ALA.
55-NE

HISTORICAL