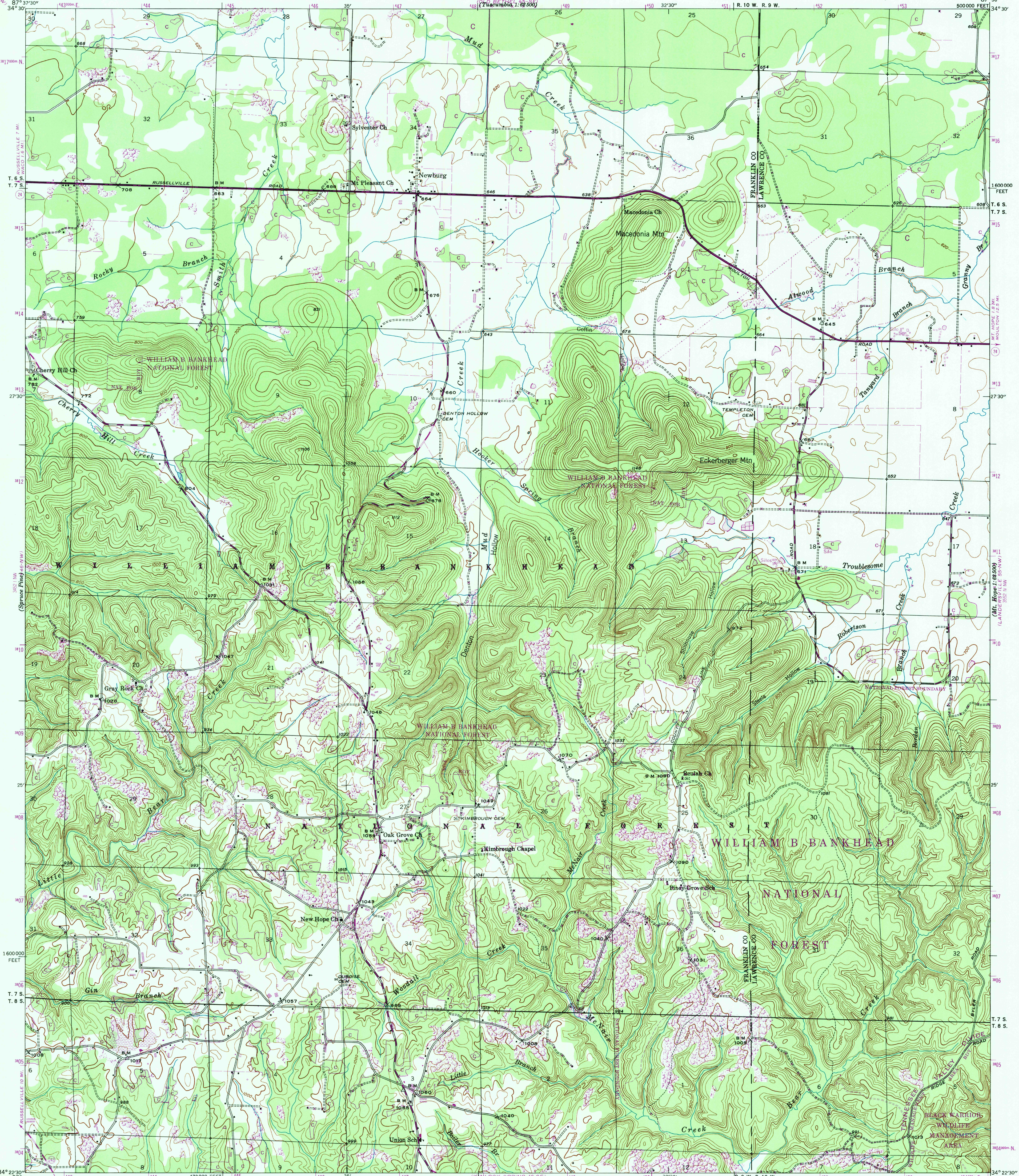


DEPARTMENT OF THE INTERIOR  
GEOLOGICAL SURVEY

ALABAMA  
NEWBURG QUADRANGLE  
7½-MINUTE SERIES



Map by the Geological Survey

1945

ROAD CLASSIFICATION

Heavy-duty ——— Light-duty ———  
Medium-duty ——— Unimproved dirt ———

State Route

1000-meter Universal Transverse Mercator grid ticks,  
zone 16, shown in purple.

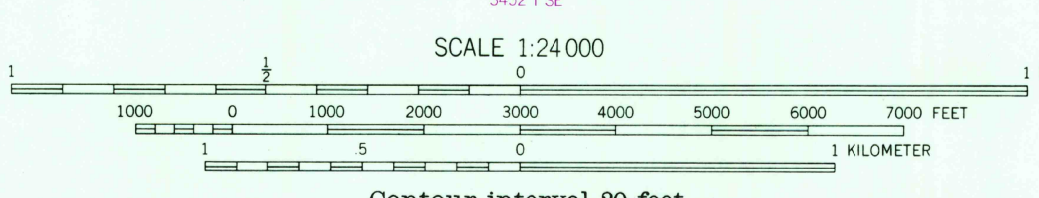
Grid declination 0°19' 6" mls West

Revisions in purple compiled by TVA, December 1967 from  
April 1967 photography without field examination

APPROXIMATE MEAN  
DECLINATION, 1945  
MAGNETIC NORTH  
TRUE NORTH  
MAGNETIC NORTH



QUADRANGLE LOCATION



Contour interval 20 feet  
Datum is mean sea level

FOR SALE BY U. S. GEOLOGICAL SURVEY, WASHINGTON, D. C. 20242,  
AND U. S. TENNESSEE VALLEY AUTHORITY, CHATTANOOGA, TENN. 37401 OR KNOXVILLE, TENN. 37902.  
A FOLDER DESCRIBING TOPOGRAPHIC MAPS AND SYMBOLS IS AVAILABLE ON REQUEST



LEGEND

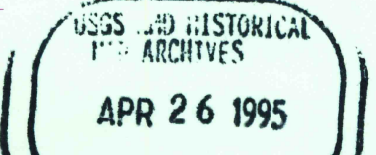
Fence and field line ———  
Stream ———  
Pond and dam ———  
Strip mine ———  
Woodland (formerly clearing) ———  
Clearing (formerly woodland) ———  
General deletion ———  
Heavy-duty road ———  
Medium-duty road ———  
Light-duty road ———  
Poor motor road ———  
Wagon and jeep track ———  
Foot trail ———

INTERIOR—GEOLOGICAL SURVEY WASHINGTON, D. C.—1970 87°30'  
Polyconic projection. 1927 North American datum  
10000 foot grid based on Alabama (West)  
rectangular coordinate system

NEWBURG, ALA.

N 3422.5—W 8730.7/5

1945



46-NE

ANS 3452 1 NE SERIES 1644