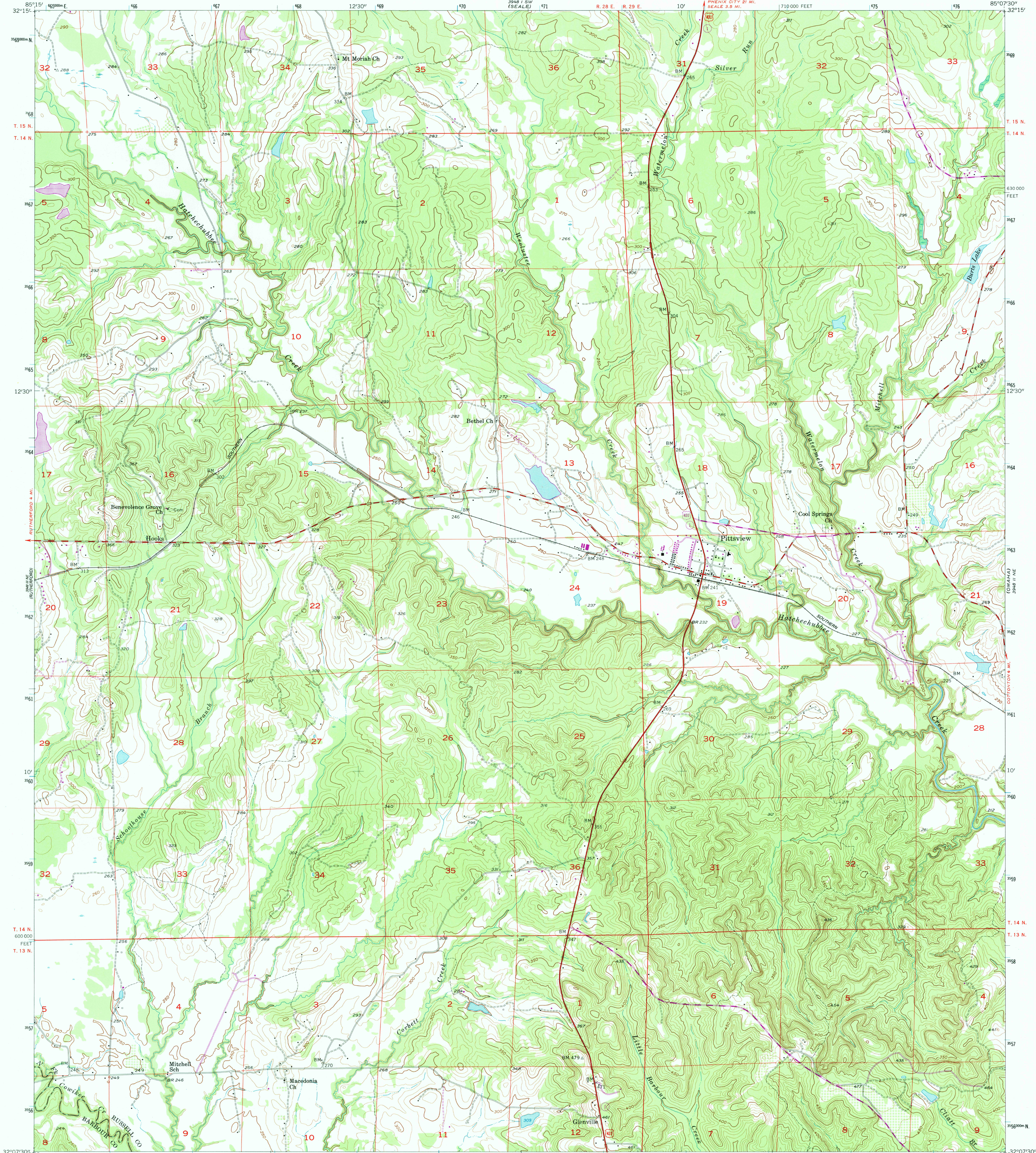


UNITED STATES  
DEPARTMENT OF THE INTERIOR  
GEOLOGICAL SURVEY

PITTSVIEW QUADRANGLE  
ALABAMA  
7.5 MINUTE SERIES (TOPOGRAPHIC)



Mapped, edited, and published by the Geological Survey

Control by USGS and NOS/NOAA

Topography by photogrammetric methods from aerial photographs taken 1955. Field checked 1957

Polyconic projection. 10,000-foot grid ticks based on Alabama coordinate system, east zone

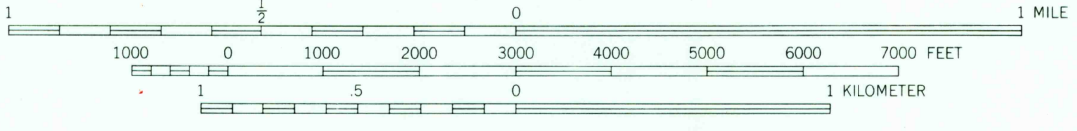
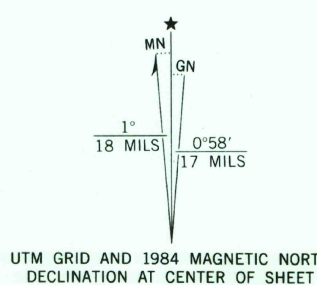
1000-meter Universal Transverse Mercator grid ticks, zone 16, shown in blue

1927 North American Datum

To place on the predicted North American Datum 1983 move the projection lines 13 meters south and 6 meters west as shown by dashed corner ticks

Revisions shown in purple and woodland compiled from aerial photographs taken 1981 and other sources

This information not field checked. Map edited 1984



CONTOUR INTERVAL 10 FEET  
NATIONAL GEODETIC VERTICAL DATUM OF 1929

THIS MAP COMPLIES WITH NATIONAL MAP ACCURACY STANDARDS  
FOR SALE BY U. S. GEOLOGICAL SURVEY, RESTON, VIRGINIA 22092  
A FOLDER DESCRIBING TOPOGRAPHIC MAPS AND SYMBOLS IS AVAILABLE ON REQUEST



ROAD CLASSIFICATION	
Primary highway, hard surface	Light-duty road, hard or improved surface
Secondary highway, hard surface	Unimproved road
Interstate Route	U. S. Route
	State Route

PITTSVIEW, ALA.  
32085-B2-TF-024

RETURN TO:  
NHD HISTORICAL MAP ARCHIVES  
USGS NATIONAL CENTER, MS-522  
RESTON, VA 22092

1957  
PHOTOREVISED 1984  
DMA 3948 II NW - SERIES V844