

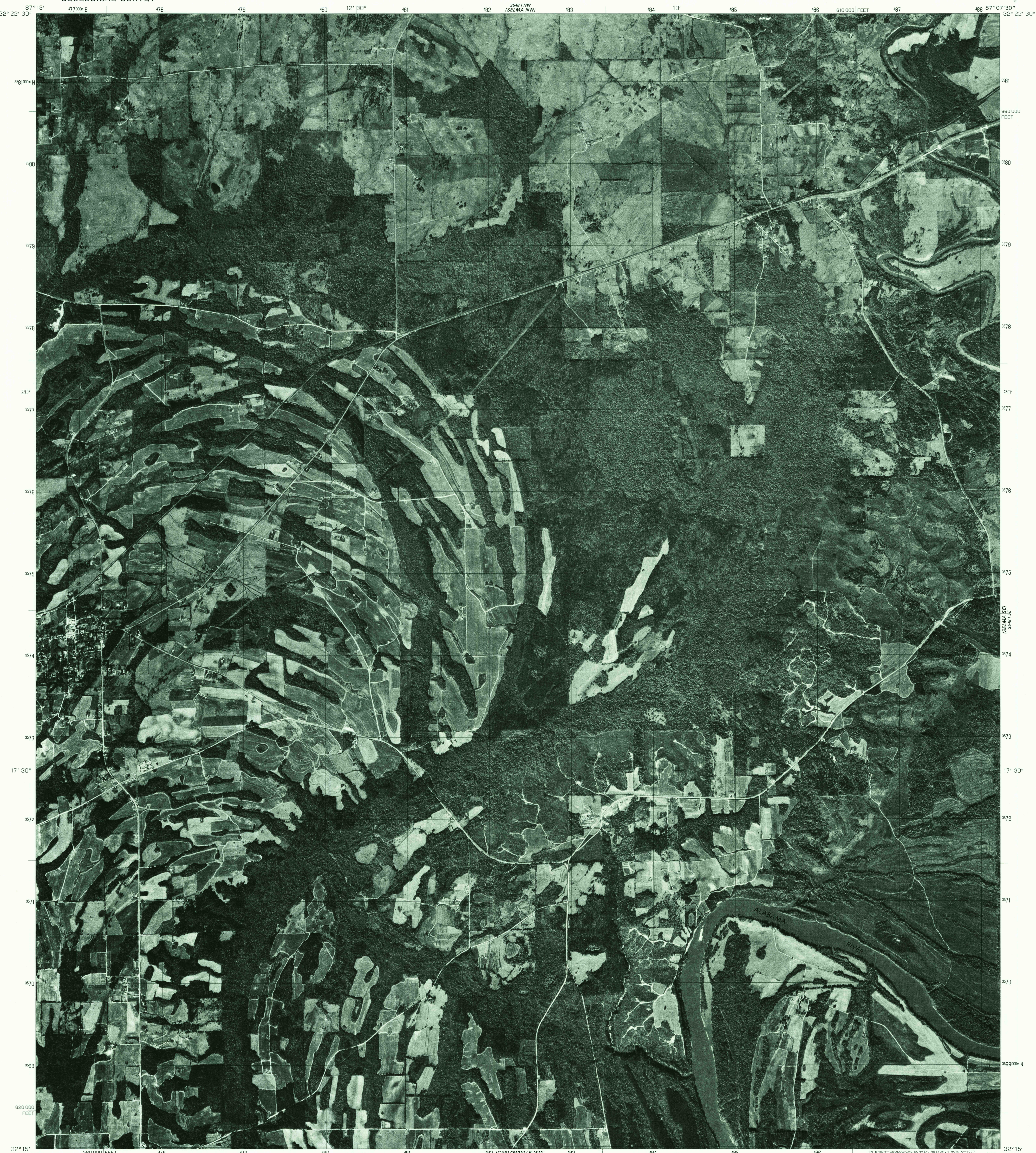
UNITED STATES
DEPARTMENT OF THE INTERIOR
GEOLOGICAL SURVEY

SELMA SW QUADRANGLE
ALABAMA
7.5 MINUTE SERIES ORTHOPHOTOQUAD

3548 I NE
(SELMA)

(SELMA SE)
3548 I SE

(CARLOWVILLE NE)
3548 I NE

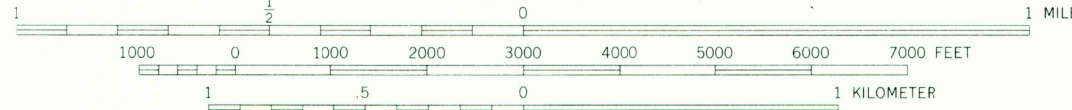
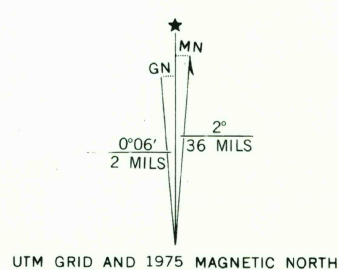


Produced by the Geological Survey

Orthophotograph prepared from 1:76,000-scale aerial photograph taken November 27, 1975

Projection and 10,000-foot grid ticks: Alabama coordinate system, (transverse Mercator) west zone 1000-meter Universal Transverse Mercator grid, zone 16. 1927 North American datum

Photoimagery transformed by scanning techniques which may produce double or mismatched images; use the mean of image positions for map point



PRINCIPAL NUMBERED HIGHWAYS

Interstate Route U. S. Route State Route



This quadrangle area also covered by SW quarter of Selma 1:62,500-scale topographic map

USGS
Historical File
Topographic Division

SELMA SW, ALA.
N3215-W8707.5/7.5
1975

AMS 3548 I SW—SERIES V044

THIS MAP COMPLIES WITH NATIONAL MAP ACCURACY STANDARDS
FOR SALE BY U. S. GEOLOGICAL SURVEY, RESTON, VIRGINIA 22092