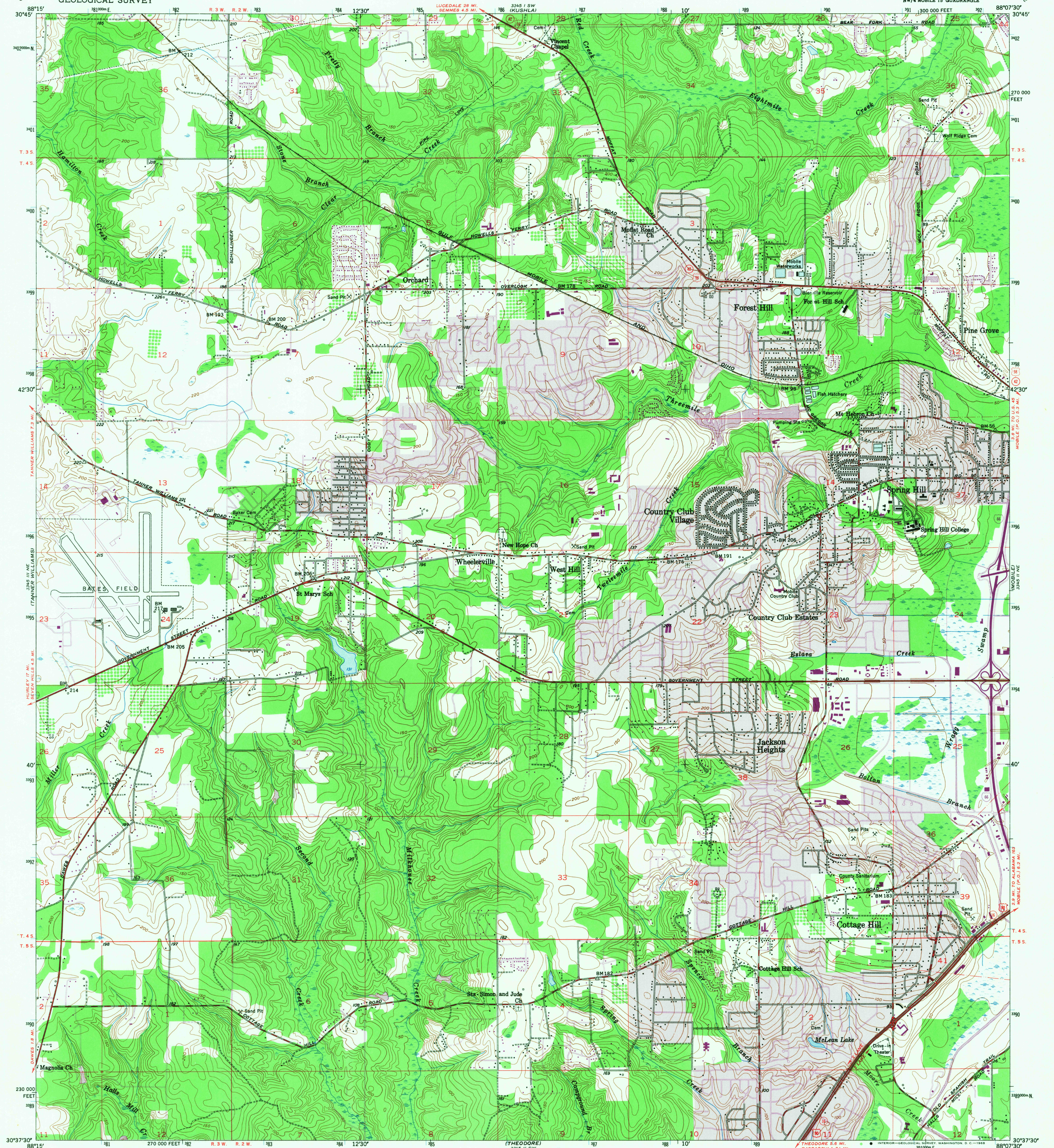
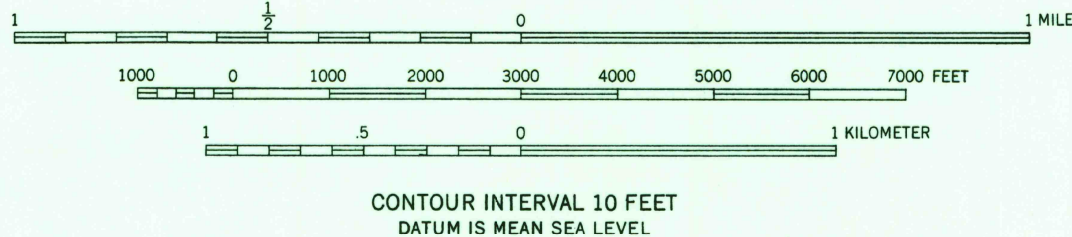
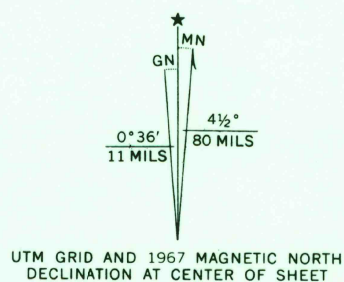


UNITED STATES  
DEPARTMENT OF THE INTERIOR  
GEOLOGICAL SURVEY

SPRING HILL QUADRANGLE  
ALABAMA-MOBILE CO.  
7.5 MINUTE SERIES (TOPOGRAPHIC)  
NW/4 MOBILE 15' QUADRANGLE



Mapped, edited, and published by the Geological Survey  
Control by USGS, USC&GS, and Alabama Geodetic Survey  
Culture and drainage in part compiled from aerial photographs  
Topography by plane-table surveys 1939-1940. Revised 1953  
Polyconic projection. 1927 North American datum  
10,000-foot grid based on Alabama coordinate system,  
west zone  
1000-meter Universal Transverse Mercator grid ticks,  
zone 16, shown in blue  
Revisions shown in purple compiled by Geological Survey from  
aerial photographs taken 1967. This information not field checked  
Purple tint indicates urban areas



USGS  
Historical File  
Topographic Division



U.S.G.S.  
FILE COPY  
TOPOGRAPHIC DIVISION

ROAD CLASSIFICATION  
Heavy-duty ——— Light-duty ———  
Medium-duty ——— Unimproved dirt ———  
Interstate Route U.S. Route State Route

SPRING HILL, ALA.  
NW/4 MOBILE 15' QUADRANGLE  
N3037.5-W8807.5/7.5  
1953  
PHOTOREVISED 1967  
AMS 3345 11 NW-SERIES V844

THIS MAP COMPLIES WITH NATIONAL MAP ACCURACY STANDARDS  
FOR SALE BY U.S. GEOLOGICAL SURVEY, WASHINGTON, D.C. 20242  
A FOLDER DESCRIBING TOPOGRAPHIC MAPS AND SYMBOLS IS AVAILABLE ON REQUEST

RETURN TO:  
AND HISTORICAL MAP ARCHIVES  
USGS NATIONAL CENTER, MS-522  
RESTON, VA 22092

2580  
JUL 19 1963  
HOLLINGS  
3345 11 NW