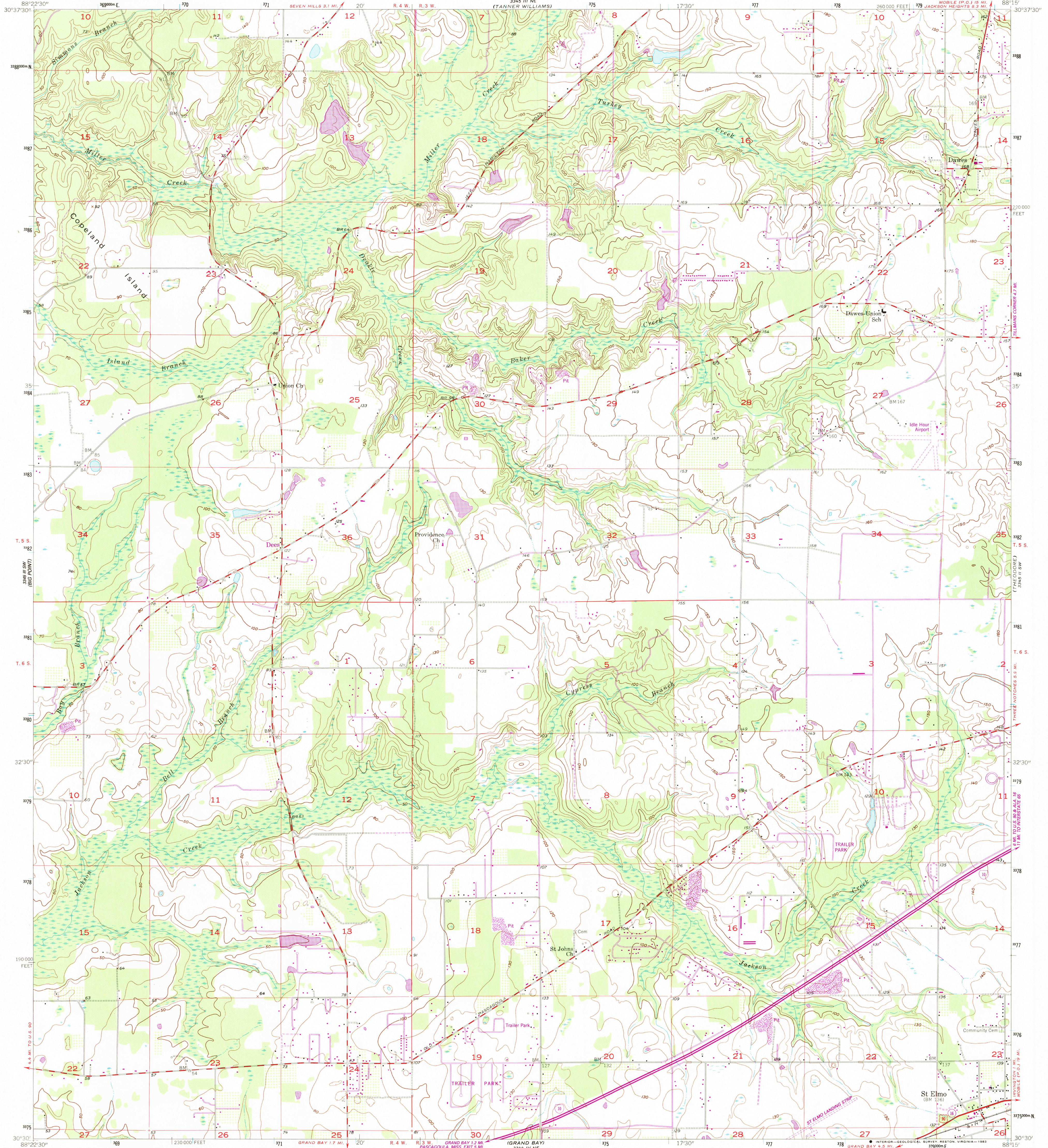


346 1 NW
(POLY)

UNITED STATES
DEPARTMENT OF THE INTERIOR
GEOLOGICAL SURVEY

ST. ELMO QUADRANGLE
ALABAMA—MOBILE CO.
7.5 MINUTE SERIES (TOPOGRAPHIC)
SE 1/4 HURLEY 15' QUADRANGLE
MOBILE (P.O.) 18 MI.
JACKSON HEIGHTS 6.3 MI.

346 1 NW
(SPRING HILL)



(MOBILE)
346 1 NW

Mapped, edited, and published by the Geological Survey

Control by USGS, USC&GS, and Alabama Geodetic Survey

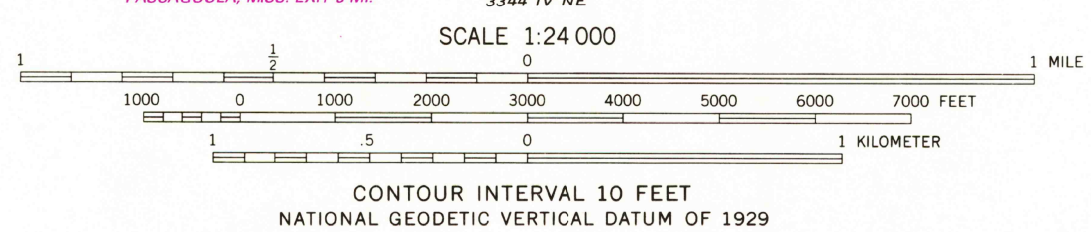
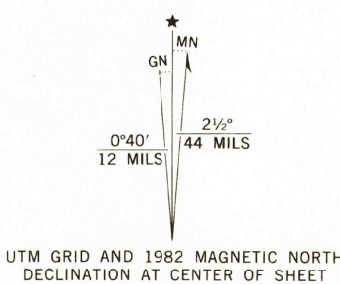
Topography from aerial photographs by Kelsh plotter

Aerial photographs taken 1954-1955. Field check 1957

Polyconic projection. 1927 North American datum
10,000-foot grid based on Alabama coordinate system,
west zone

1000-meter Universal Transverse Mercator grid ticks,
zone 16, shown in blue
To place on the predicted North American Datum 1983
move the projection lines 17 meters south and
2 meters east as shown by dashed corner ticks

Revisions shown in purple compiled from aerial photographs taken 1981
and other sources. This information not field checked. Map edited 1982



THIS MAP COMPLIES WITH NATIONAL MAP ACCURACY STANDARDS
FOR SALE BY U. S. GEOLOGICAL SURVEY, RESTON, VIRGINIA 22092
A FOLDER DESCRIBING TOPOGRAPHIC MAPS AND SYMBOLS IS AVAILABLE ON REQUEST



RETURN TO:
NHD HISTORICAL MAP ARCHIVES
USGS NATIONAL CENTER, MS-522
RESTON, VA 22092

ROAD CLASSIFICATION
Primary highway, hard surface
Secondary highway, hard surface
Light-duty road, hard or improved surface
Unimproved road
Interstate Route
U. S. Route
State Route

SEP 1 1985

ST. ELMO, ALA.
SE 1/4 HURLEY 15' QUADRANGLE
N 3030-W 8815/7.5
1957
PHOTOREVISED 1982
DMA 3345 III SE—SERIES V844

(CODE)
346 1 NW