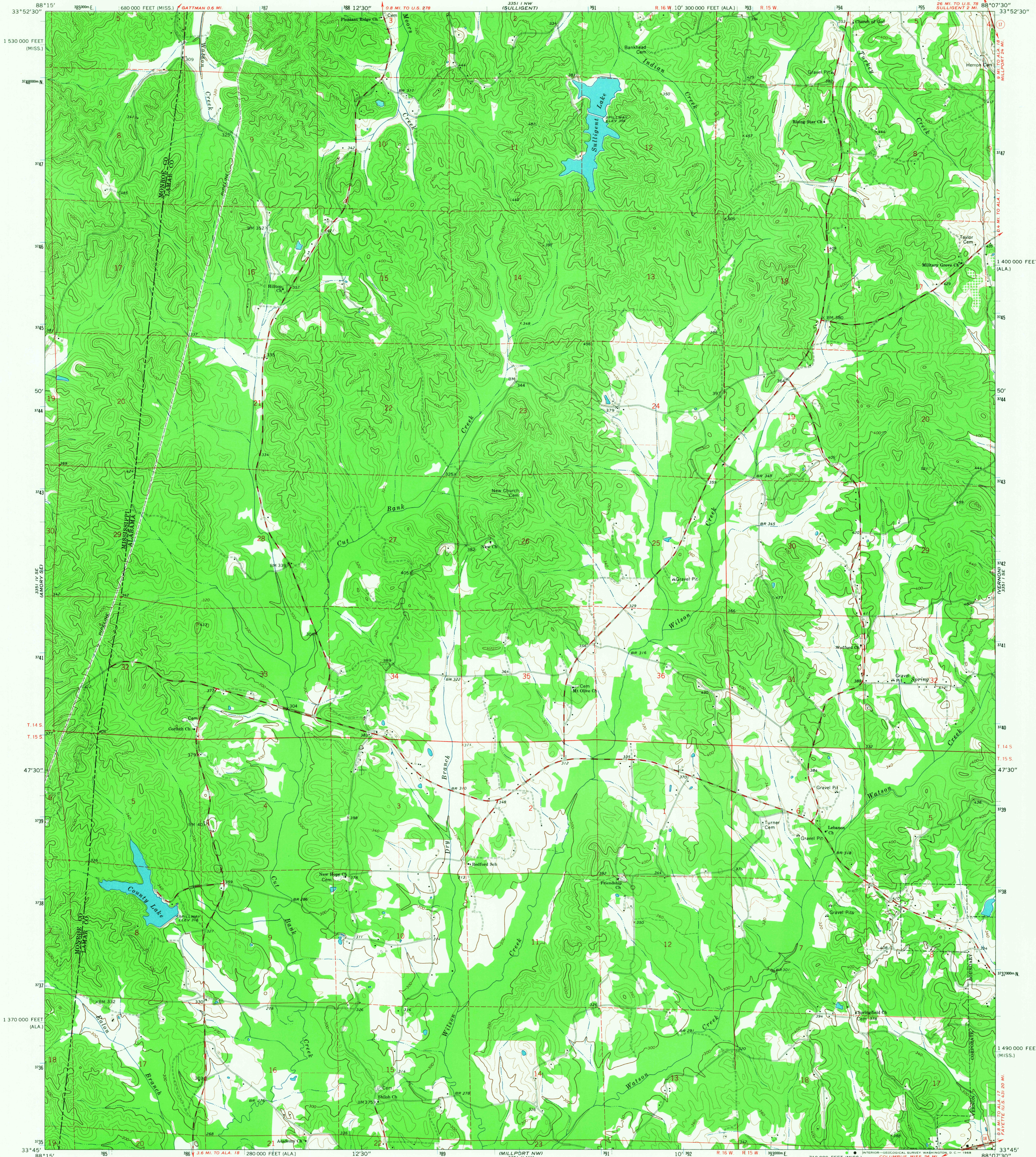
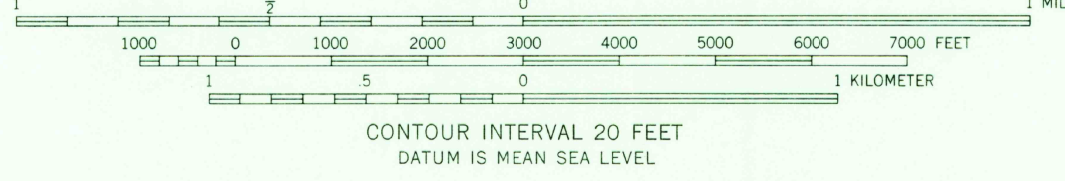
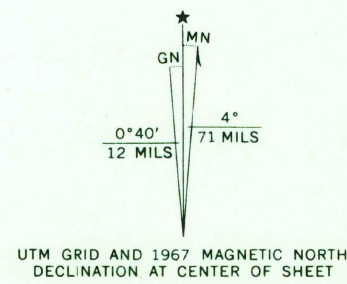


UNITED STATES
DEPARTMENT OF THE INTERIOR
GEOLOGICAL SURVEY

SULLIGENT SW QUADRANGLE
ALABAMA—MISSISSIPPI
7.5 MINUTE SERIES (TOPOGRAPHIC)



Mapped, edited, and published by the Geological Survey
Control by USGS and USC&GS
Topography by photogrammetric methods from aerial
photographs taken 1965. Field checked 1967
Polyconic projection. 1927 North American datum
10,000-foot grids based on Alabama coordinate system, west zone,
and Mississippi coordinate system, east zone
1000-meter Universal Transverse Mercator grid ticks,
zone 16, shown in blue
Fine red dashed lines indicate selected fence and field lines where
generally visible on aerial photographs. This information is unchecked



USGS
Historical File
Topographic Division

U.S.G.S.
FILE COPY
TOPOGRAPHIC DIVISION
HISTORICAL

ROAD CLASSIFICATION
Heavy-duty ——— Light-duty ———
Medium-duty ——— Unimproved dirt ———
State Route

SULLIGENT SW, ALA.—MISS.
N3345—W8807.5/7.5
1967
AMS 3351 1 SW—SERIES V844

JUN 12 1968
HISTORICAL