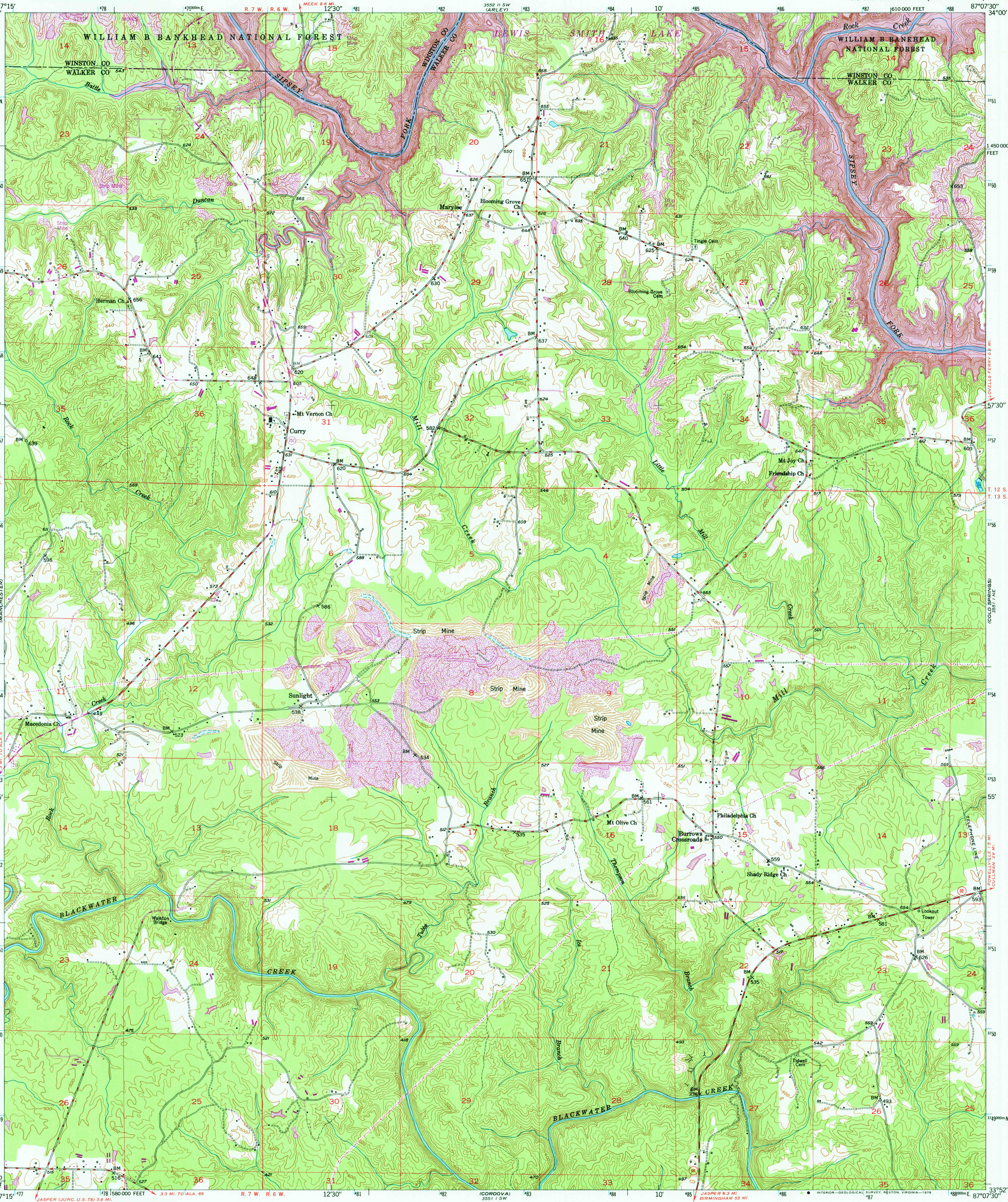
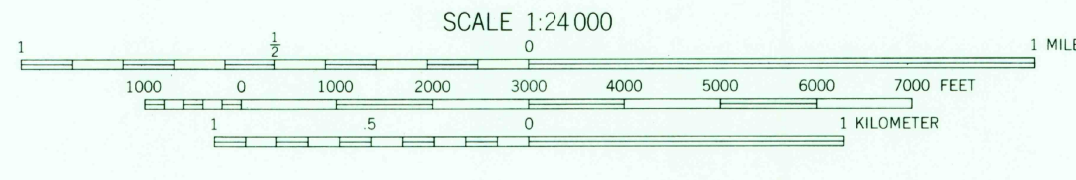
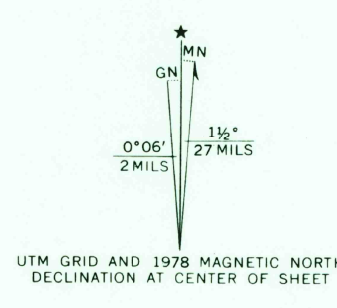


UNITED STATES  
DEPARTMENT OF THE INTERIOR  
GEOLOGICAL SURVEY

SUNLIGHT QUADRANGLE  
ALABAMA  
7.5 MINUTE SERIES (TOPOGRAPHIC)



Maped, edited, and published by the Geological Survey  
Control by USGS, USC&GS, and USED  
Topography from aerial photographs by multiplex methods  
Aerial photographs taken 1946. Field check 1949  
Polyconic projection. 1927 North American datum  
10,000-foot grid based on Alabama coordinate system  
west zone  
1000-meter Universal Transverse Mercator grid ticks,  
zone 16, shown in blue  
Revisions shown in purple compiled from aerial photographs taken 1975  
This information not field checked. Map edited 1978



CONTOUR INTERVAL 20 FEET  
NATIONAL GEODETIC VERTICAL DATUM OF 1929

THIS MAP COMPLIES WITH NATIONAL MAP ACCURACY STANDARDS  
FOR SALE BY U.S. GEOLOGICAL SURVEY, RESTON, VIRGINIA 22092  
A FOLDER DESCRIBING TOPOGRAPHIC MAPS AND SYMBOLS IS AVAILABLE ON REQUEST



ROAD CLASSIFICATION

HARD-SURFACE ALL WEATHER ROADS	DRY WEATHER ROADS
Heavy-duty <u>    </u> <u>    </u> <u>    </u>	Improved dirt <u>    </u> <u>    </u> <u>    </u>
Medium-duty <u>    </u> <u>    </u> <u>    </u>	Unimproved dirt <u>    </u> <u>    </u> <u>    </u>
Loose-surface, graded, or narrow hard-surface <u>    </u> <u>    </u> <u>    </u>	
U. S. Route <u>    </u> <u>    </u> <u>    </u>	State Route <u>    </u> <u>    </u> <u>    </u>

USGS  
Historical File  
Topographic Division

SUNLIGHT, ALA.  
N352.5-W8707.5/7.5  
1949  
PHOTOREVISED 1978  
AMS 3551 1 NW-SERIES V844

AUG 0 1 1978

3050  
P2