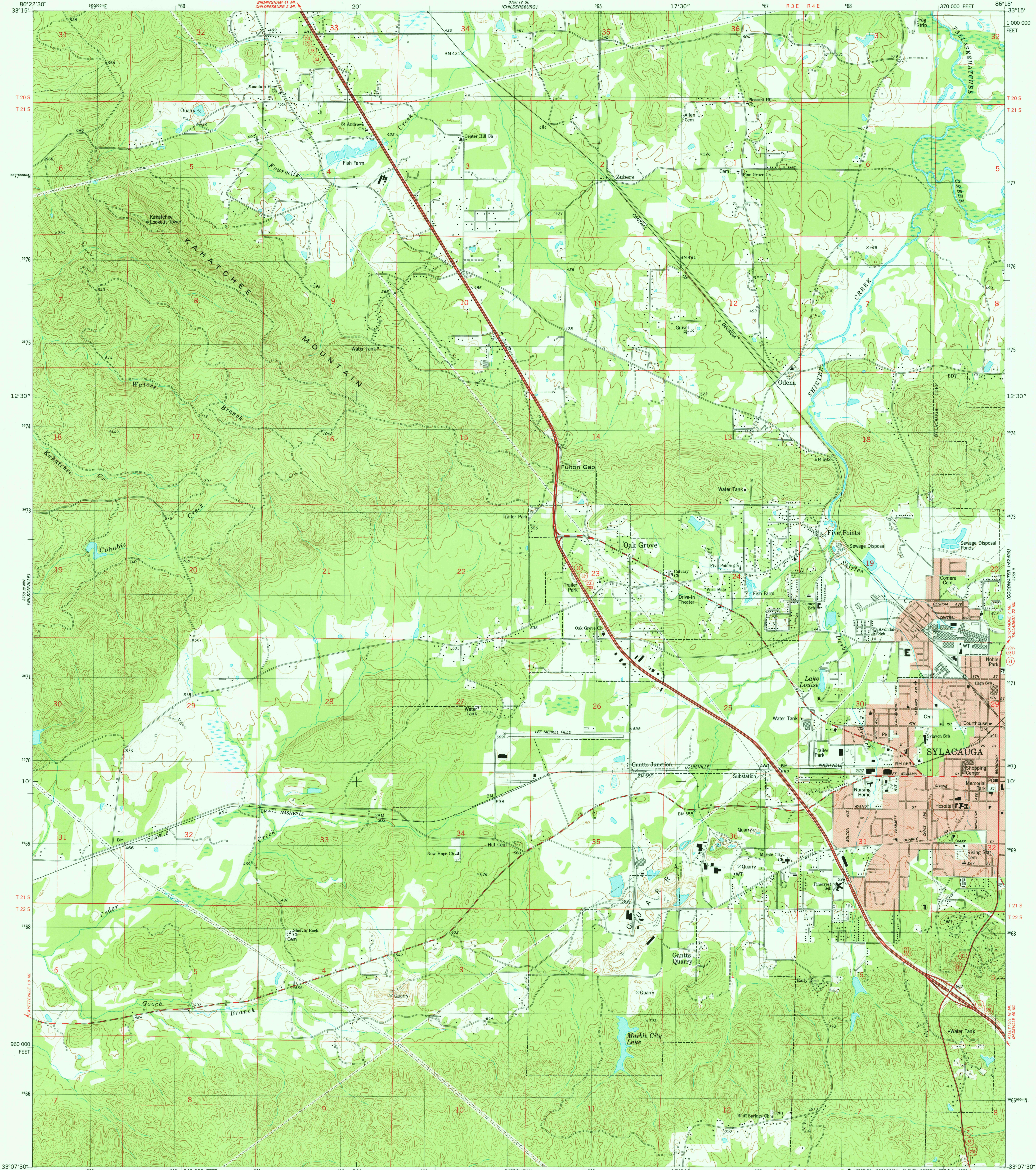
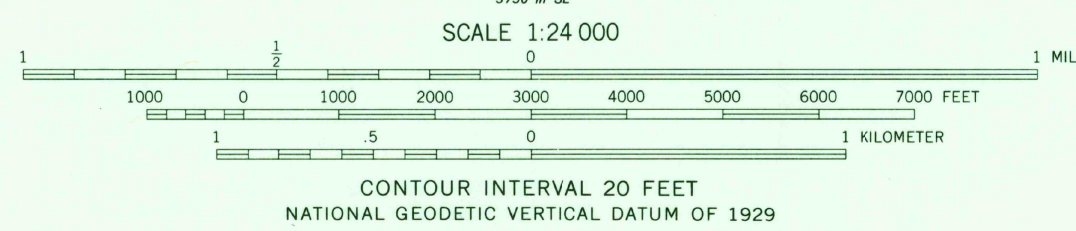
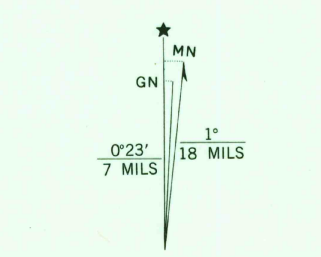


UNITED STATES  
DEPARTMENT OF THE INTERIOR  
GEOLOGICAL SURVEY

SYLACAUGA WEST QUADRANGLE  
ALABAMA—TALLADEGA CO.  
7.5 MINUTE SERIES (TOPOGRAPHIC)  
NE/4 GANTTS QUARRY 15' QUADRANGLE



Mapped, edited, and published by the Geological Survey  
Control by USGS and NOS/NOAA  
Topography by photogrammetric methods from aerial photographs taken 1974. Field checked 1975. Map edited 1980  
Projection and 10,000-foot grid ticks: Alabama coordinate system, east zone (transverse Mercator)  
1000-meter Universal Transverse Mercator grid, zone 16  
1927 North American Datum  
To place on the predicted North American Datum 1983 move the projection lines 10 meters south and 3 meters west as shown by dashed corner ticks  
Red tint indicates area in which only landmark buildings are shown  
Fine red dashed lines indicate selected fence and field lines where generally visible on aerial photographs. This information is unchecked



USGS  
Historical File  
Topographic Division  
SYLACAUGA WEST, ALA.  
NE/4 GANTTS QUARRY 15' QUADRANGLE  
N3307.5-W8615/7.5  
1980  
DMA 3750 III NE-SERIES V844

AUG 11 1980