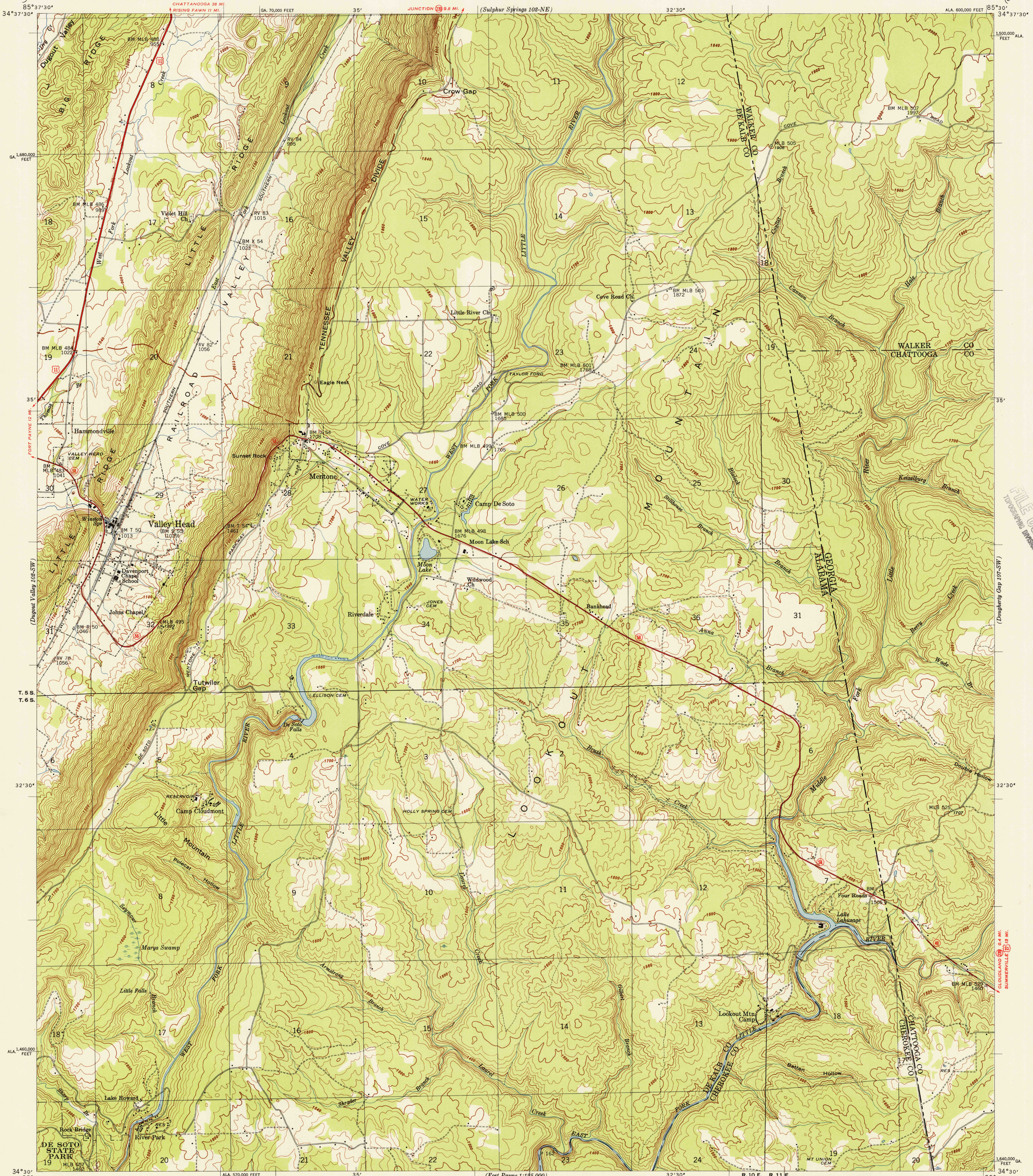


UNITED STATES
DEPARTMENT OF THE INTERIOR
GEOLOGICAL SURVEY

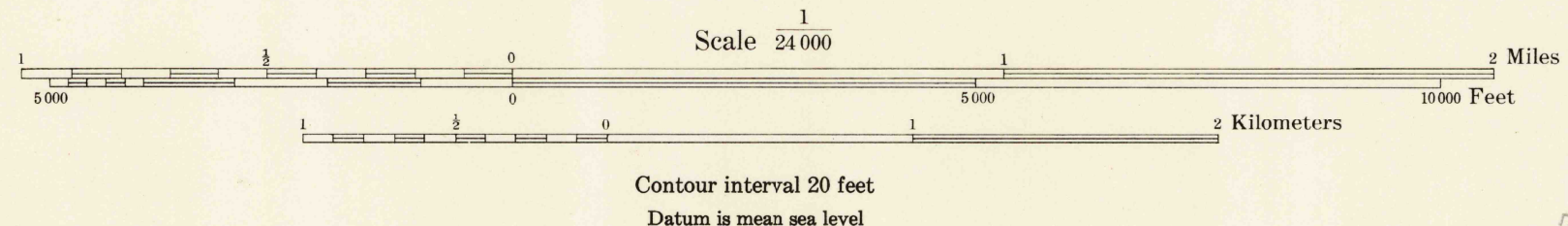
UNITED STATES
TENNESSEE VALLEY AUTHORITY
MAPS AND SURVEYS DIVISION

ALABAMA-GEORGIA
VALLEY HEAD QUADRANGLE
102-SE



Control by USC&GS, USGS, and TVA
Topography by USGS and TVA from aerial
photographs by stereophotogrammetric methods
Field examination by Tennessee Valley Authority, 1946

TRUE NORTH
MAGNETIC NORTH
APPROXIMATE MEAN
DECLINATION, 1947



FOR SALE BY U. S. GEOLOGICAL SURVEY, WASHINGTON 25, D. C.
AND U. S. TENNESSEE VALLEY AUTHORITY, CHATTANOOGA OR KNOXVILLE, TENN.
A FOLDER DESCRIBING TOPOGRAPHIC MAPS AND SYMBOLS IS AVAILABLE ON REQUEST

USGS
Historical File
Topographic Division

Polyconic projection, 1927 North American datum
10,000 foot grid based on Alabama (East) and
Georgia (West) rectangular coordinate systems

ROUTES USUALLY TRAVELED
HARD, IMPERVIOUS SURFACES
OTHER SURFACE IMPROVEMENTS
U. S. ROUTE STATE ROUTE

VALLEY HEAD, ALA.-GA.
102-SE
N3430-W8530/7.5
1946

U.S.G.S.
FILE COPY
TOPOGRAPHIC DIVISION
HISTORICAL

DEC 6 1956
1000