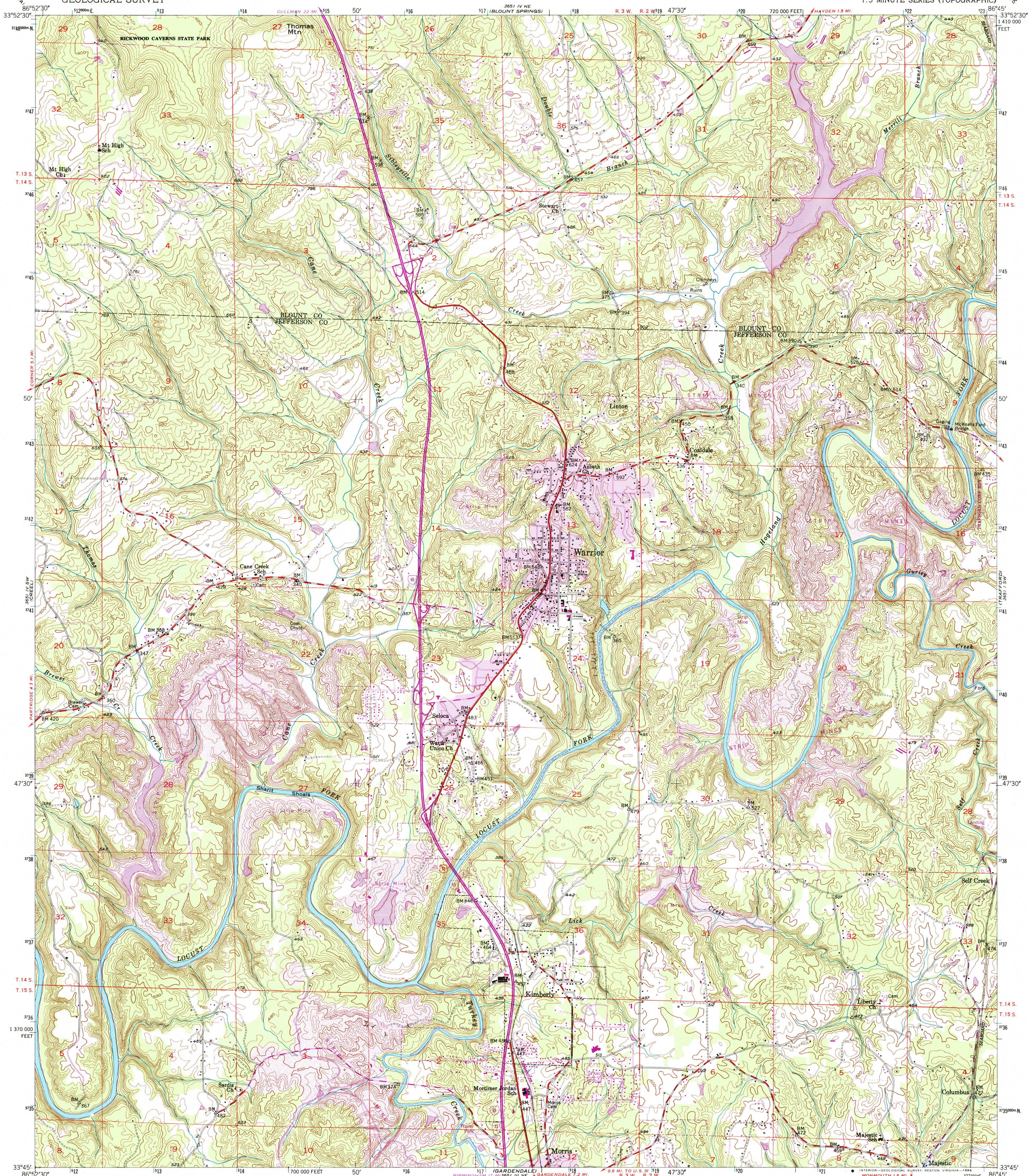
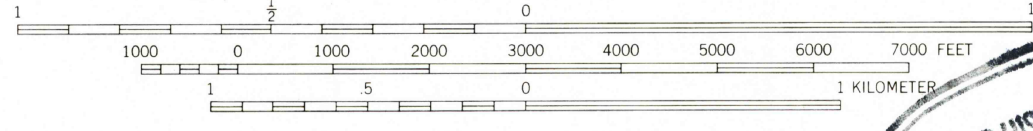
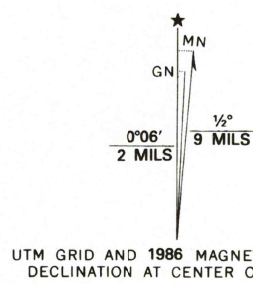


UNITED STATES  
DEPARTMENT OF THE INTERIOR  
GEOLOGICAL SURVEY

WARRIOR QUADRANGLE  
ALABAMA  
7.5 MINUTE SERIES (TOPOGRAPHIC)



Maped, edited, and published by the Geological Survey  
Control by USGS, USC&GS, USCE, and Alabama Geodetic Survey  
Topography from aerial photographs by multiplex methods  
Aerial photographs taken 1947. Field check 1951  
Polyconic projection. 1927 North American datum  
10,000-foot grid based on Alabama coordinate system,  
west zone  
1000-meter Universal Transverse Mercator grid ticks,  
zone 16, shown in blue  
To place on the predicted North American Datum 1983,  
move the projection lines 9 meters south and  
1 meter west as shown by dashed corner ticks  
There may be private inholdings within the boundaries of  
the National or State reservations shown on this map



ROAD CLASSIFICATION  
Heavy-duty ——— Light-duty ———  
Medium-duty ——— Unimproved dirt ———  
Interstate Route U. S. Route State Route

WARRIOR, ALA.  
33086-67-TF-024

1951  
PHOTOREVISED 1986  
DMA 3651 IV SE-SERIES V844

THIS MAP COMPLIES WITH NATIONAL MAP ACCURACY STANDARDS  
FOR SALE BY U. S. GEOLOGICAL SURVEY, DENVER, COLORADO 80225, OR RESTON, VIRGINIA 22092  
A FOLDER DESCRIBING TOPOGRAPHIC MAPS AND SYMBOLS IS AVAILABLE ON REQUEST

USGS AND HISTORICAL MAP ARCHIVES