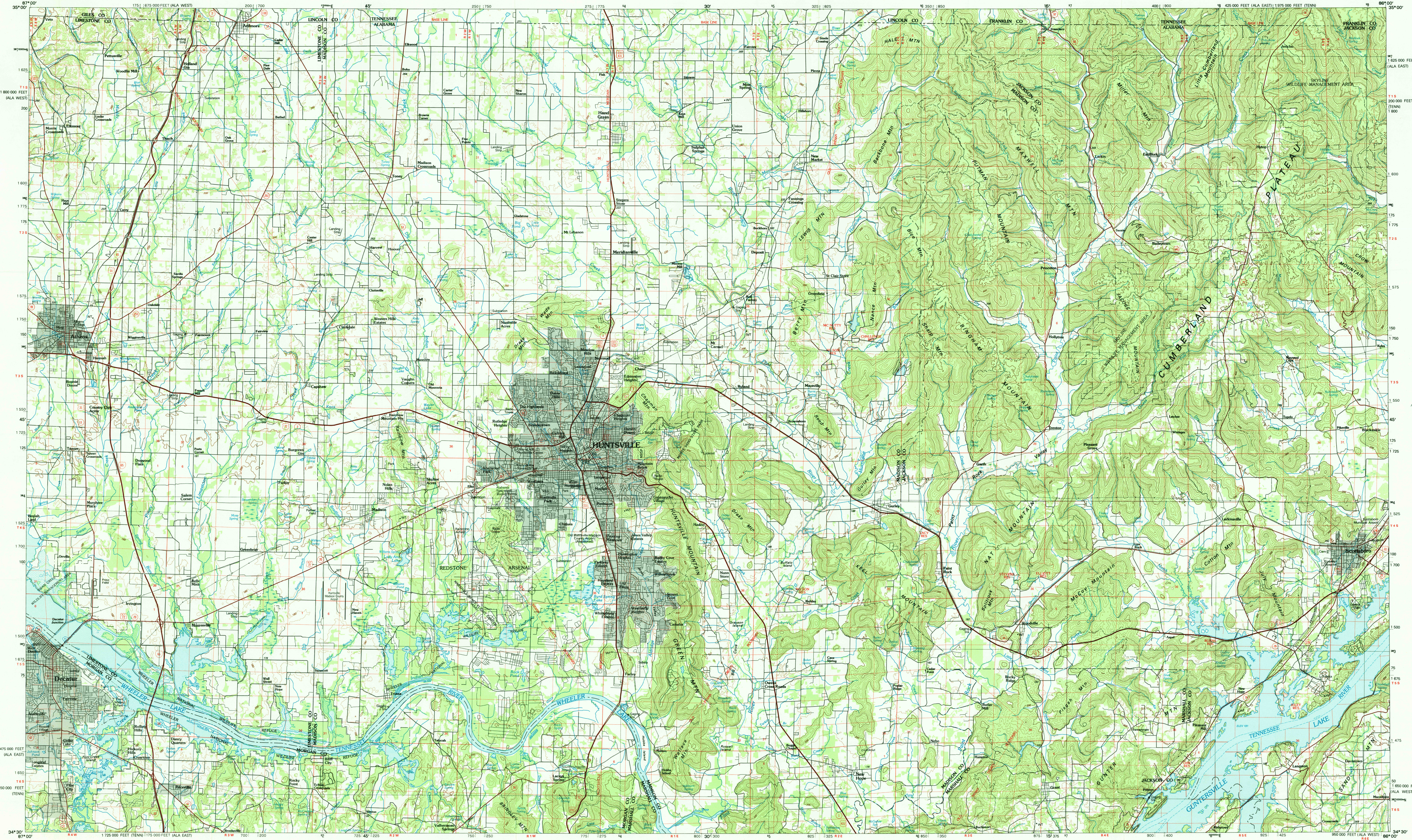


HUNTSVILLE, ALABAMA – TENNESSEE

30 X 60 MINUTE SERIES (TOPOGRAPHIC)



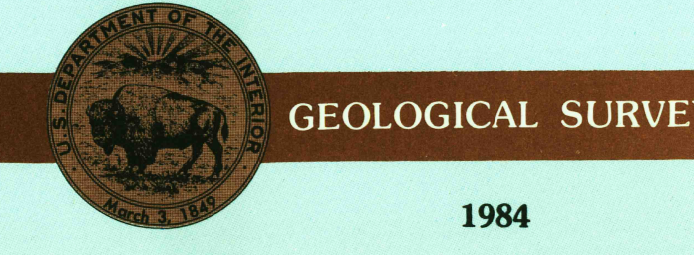
Huntsville
ALABAMA – TENNESSEE

1:100 000-scale metric
topographic map



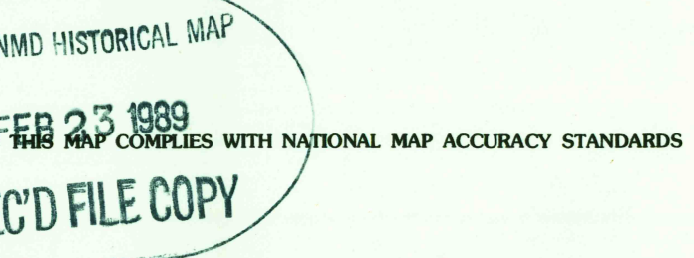
30 X 60 MINUTE QUADRANGLE
SHOWING

- Contours and elevations in meters
- Highways, roads and other manmade structures
- Water features
- Woodland areas
- Geographic names



Produced by the United States Geological Survey
Compiled from USGS 1:24 000-scale topographic maps dated 1964–1982. Planimetry revised from aerial photographs taken 1981 and other source data. Revised information not field checked. Map edited 1984.
Projection and 10 000-meter grid zone 16: Universal Transverse Mercator
25 000-foot grid ticks based on Alabama coordinate system, east and west zones, and Tennessee coordinate system
1927 North American Datum
To place on the predicted North American Datum 1983 move the projection lines 8 meters south and 1 meter west
There may be private inholdings within the boundaries of the National or State reservations shown on this map

CONTOUR INTERVAL 20 METERS
NATIONAL GEODETIC VERTICAL DATUM OF 1929
SEA LEVEL DATUM TO THE NEAREST METER



CONVERSION TABLE

Meters	Feet
1	3.2808
2	6.5616
3	9.8424
4	13.1232
5	16.4040
6	19.6848
7	22.9656
8	26.2464
9	29.5272
10	32.8080

To convert meters to feet multiply by 3.2808

To convert feet to meters multiply by 0.3048

DECLINATION DIAGRAM

The diagram shows two vertical lines representing north. The left line is labeled 'MN' (Magnetic North) and the right line is labeled 'N' (True North). An arc between the two lines is labeled '5°' and '5 MILS'. Below the lines, there are labels '5°' and '5 MILS' indicating the declination.

UTM grid convergence (G) and 1984 magnetic declination (M) at center of map
Diagram is approximate

ADJOINING MAPS

1	2	3
4	5	
6	7	8

- Lawrenceburg
- Tullahoma
- Chattanooga
- Tusculum
- Chickamauga
- Malheur
- Cumterville
- Knox

FOR SALE BY U.S. GEOLOGICAL SURVEY
DENVER, COLORADO 80225 OR RESTON, VIRGINIA 22092
TENNESSEE DEPARTMENT OF CONSERVATION, DIVISION OF GEOLOGY
NASHVILLE, TENNESSEE 37219, AND
U.S. TENNESSEE VALLEY AUTHORITY, CHATTANOOGA, TENNESSEE 37401
OR KNOXVILLE, TENNESSEE 37902

Topographic Map Symbols

Primary highway, hard surface	
Secondary highway, hard surface	
Light duty road, principal street, hard or improved surface	
Other road or street; trail	
Route marker: Interstate; U. S.; State	
Railroad: standard gauge; narrow gauge	
Bridge: covered; underpass	
Tunnel: road; railroad	
Built up area; locality; elevation	
Airport; landing field; landing strip	
National boundary	
State boundary	
County boundary	
National or State reservation boundary	
Land grant boundary	
U. S. public lands survey: range, township, section	
Range, township, section line; protected	
Power transmission line; pipeline	
Dam; dam with lock	
Cemetery; building	
Windmill; water well; spring	
Mine shaft; salt or cave; mine; quarry; gravel pit	
Campground; picnic area; U. S. location monument	
Ruin; cliff dwelling	
Distorted surface: strip mine; lava; sand	
Contours: index; intermediate; supplementary	
Bathymetric contours: index; intermediate	
Stream; lake; perennial; intermittent	
Rapids; large and small; falls; large and small	
Area to be submerged; marsh; swamp	
Land subject to controlled inundation; woodland	
Scrub; mangrove	
Orchard; vineyard	

A pamphlet describing topographic maps is available on request