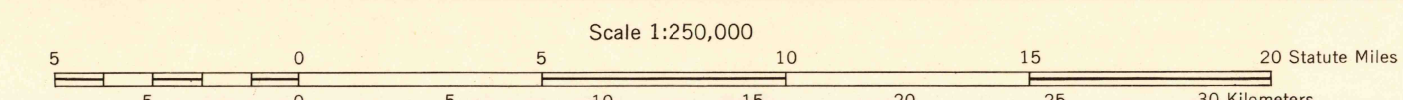
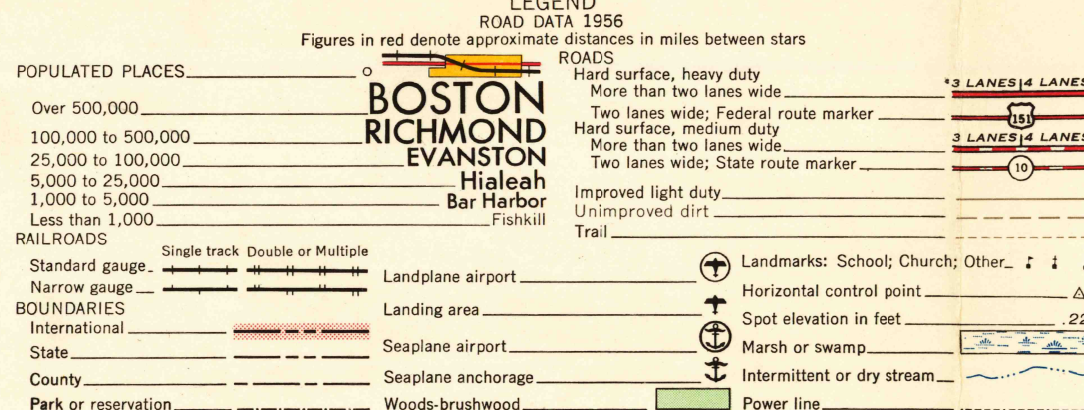
V501
Edition 1-AMS (First Printing, 12-58)

Prepared by the Army Map Service (TWS), Corps of Engineers, U. S. Army, Washington, D. C. Compiled in 1956 by photogrammetric methods and from: United States Quadrangles, 1:24,000, 1:25,000, 1:62,500, U. S. Geological Survey, Army Map Service and Tennessee Valley Authority, edition 1935-56. Planimetric detail revised by photogrammetric methods. Control by USCGS, USGS, CE, and TVA. Map field checked, 1956.



CONTOUR INTERVAL 100 FEET
WITH SUPPLEMENTARY CONTOURS AT 50 FOOT INTERVALS

TRANSVERSE MERCATOR PROJECTION

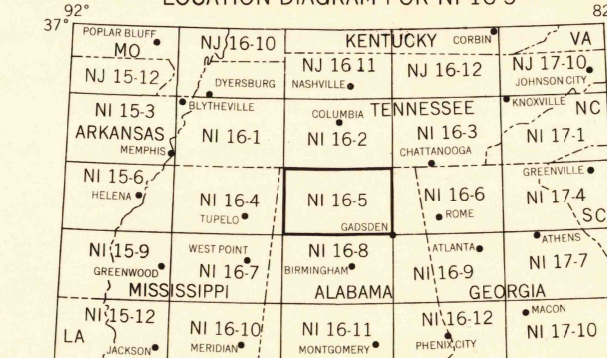
BLUE NUMBERED LINES INDICATE THE 10,000 METER UNIVERSAL TRANSVERSE MERCATOR GRID, ZONE 16

THE LAST FOUR DIGITS OF THE GRID NUMBERS ARE OMITTED

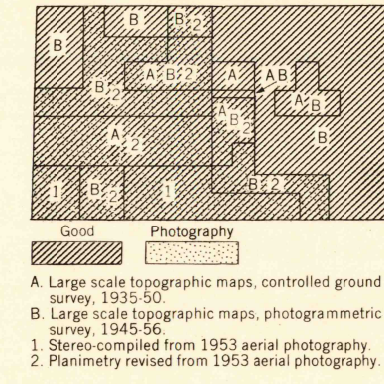
BLUE MAGNETIC DECLINATION FOR THIS SHEET VARIES FROM 4° 15' EAST AT THE CENTER OF THE SHEET TO 2° 45' WEST AT THE EAST EDGE. MEAN ANNUAL CHANGE IS 0° 20' WESTERLY.

USERS NOTING ERRORS OR OMISSIONS ON THIS MAP ARE URGED TO MARK HEREON AND FORWARD DIRECTLY TO COMMANDING OFFICER, ARMY MAP SERVICE, WASHINGTON, D. C. MAPS SO FORWARDED WILL BE RETURNED OR REPLACED IF DESIRED.

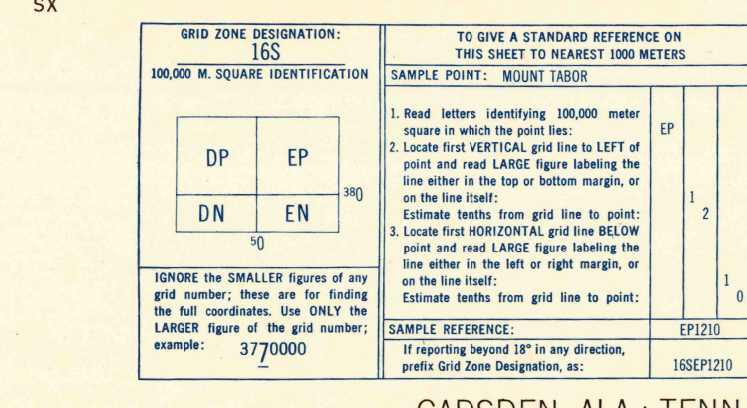
LOCATION DIAGRAM FOR NI 16-5



RELIABILITY DIAGRAM



PRINTED BY ARMY MAP SERVICE, CORPS OF ENGINEERS, 12-58, 665940



USGS
Historical File
Topographic Division

GADSDEN, ALA.; TENN.

USGS
FILE COPY
TOPOGRAPHIC DIVISION

HISTORICAL