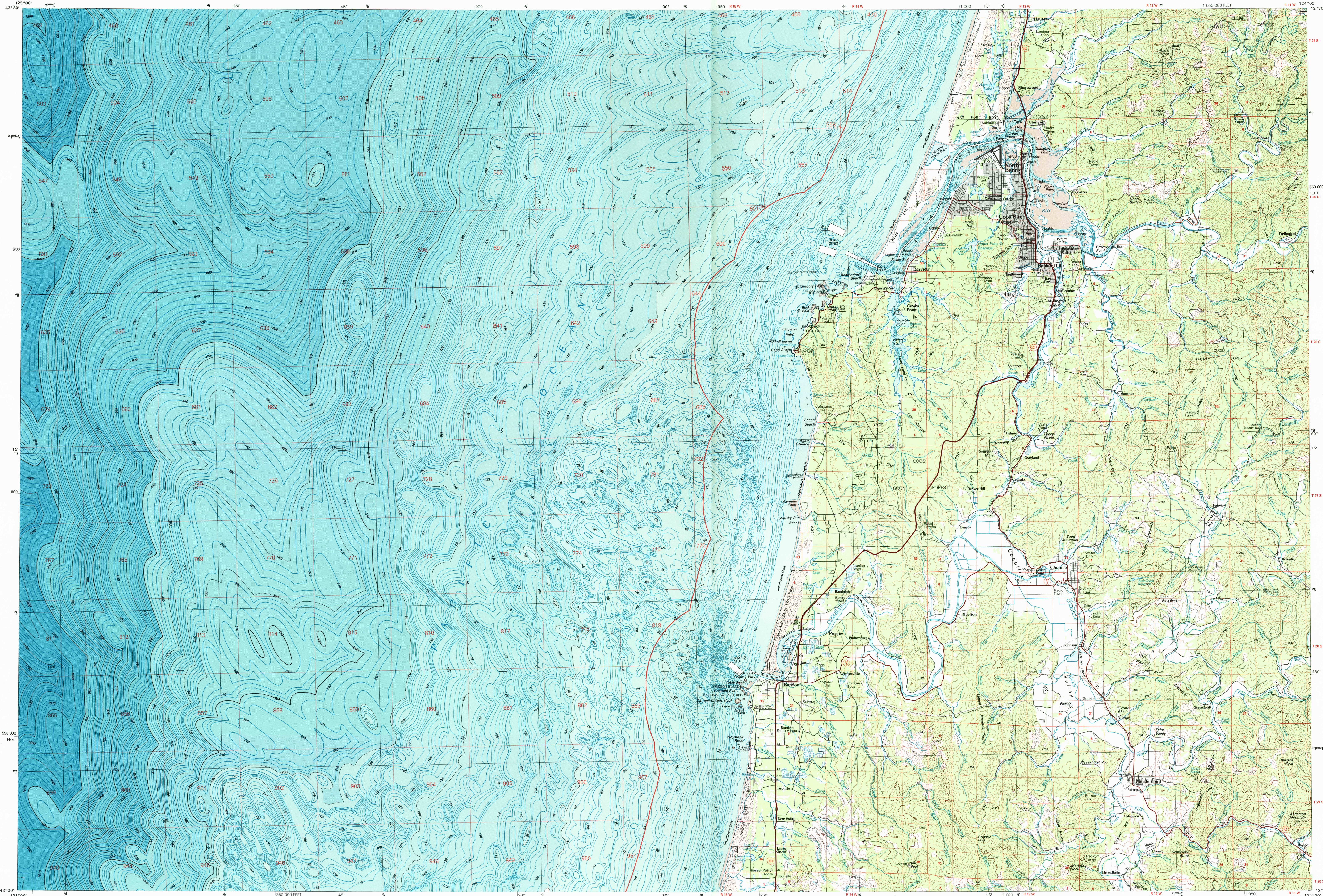


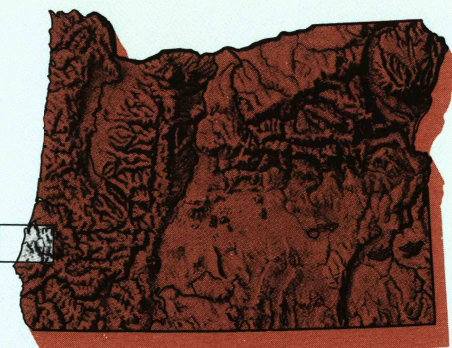
COOS BAY, OREGON

30X60 MINUTE SERIES (TOPOGRAPHIC-BATHYMETRIC)



Coos Bay
OREGON

1:100 000-scale metric
topographic-bathymetric map



30 X 60 MINUTE QUADRANGLE
SHOWING

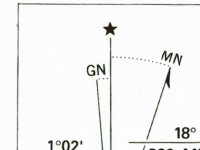
- Contours and elevations in meters
- Highways, roads and other manmade structures
- Water features
- Woodland areas
- Geographic names
- Bathymetric contours in meters



1993

Produced by the United States Geological Survey and the National Ocean Service
Compiled from USGS 1:24 000-scale topographic maps dated 1970-1971
Parameters revised from aerial photographs taken 1991
Revised information not field checked. Map edited 1993
Bathymetry compiled by the National Ocean Service from tide-coordinated hydrographic surveys. This information is not intended for navigational purposes. Mean lower low water (dotted) line and mean high water (heavy solid) line compiled by NOS from tide-coordinated aerial photographs
Apparent shoreline (outer edge of vegetation/shrub by light solid line 1927 North American Datum (NAD 27). Projection and 10 000-meter grid. Universal Transverse Mercator, zone 10
50 000-foot ticks: Oregon coordinate system, south zone
The difference between (NAD 27) and North American Datum of 1983 (NAD 83) is too small to show at this scale. The values of the shift between the datums for 7.5-minute intersections are given in USGS Bulletin 1875
Offshore protection survey data, shown in red, furnished by the Minerals Management Service. Heavy lines indicate limits of Outer Continental Shelf Official Protection Diagram dated November 2, 1976. The projections on this map are not for Federal leasing purposes; for such purposes, refer to the 1:250 000-scale OCS Official Protection Diagram available from the Minerals Management Service
There may be private inholdings within the boundaries of the National or State reservations shown on this map

CONTOUR INTERVAL: 50 METERS
NATIONAL GEODETIC VERTICAL DATUM OF 1929
ELEVATIONS SHOWN TO THE NEAREST METERS
BATHYMETRIC CONTOUR INTERVAL: 10 METERS TO 200 METERS DEPTH WITH SUPPLEMENTARY 2 METER CONTOURS; THERE 50 METERS TO MAXIMUM DEPTH WITH SUPPLEMENTARY 10 METER CONTOURS. DATUM: MEAN LOWER LOW WATER. THE RELATIONSHIP BETWEEN THE TWO DATUMS IS VARIABLE
MAP COMPLETES WITH NATIONAL MAP ACCURACY STANDARDS
BATHYMETRIC SURVEY DATA COMPLETES WITH INTERNATIONAL HYDROGRAPHIC ORGANIZATION (IHO) PUBLICATION 44 ACCURACY STANDARDS AND/OR STANDARDS USED AT THE DATE OF THE SURVEY

CONVERSION TABLE		DECLINATION DIAGRAM		ADJOINING MAPS			
Meters	Feet						
1	3.2808			1	2	3	
2	6.5617			4	5	6	
3	9.8425			7	8	9	
4	13.1234						
5	16.4042						
6	19.6850						
7	22.9659						
8	26.2467						
9	29.5275						
10	32.8084						
To convert meters to feet multiply by 3.2808		UTM grid convergence (GN) and 1983 magnetic declination (M) at center of map Diagram is approximate		1	2	3	
To convert feet to meters multiply by 0.3048				4	5	6	
				7	8	9	
				10	11	12	

FOR SALE BY U.S. GEOLOGICAL SURVEY
DENVER, COLORADO 80225, OR RESTON, VIRGINIA 20192
AND NATIONAL OCEAN SERVICE, ROCKVILLE, MARYLAND 20852

Topographic Map Symbols

- Primary highway, hard surface
- Secondary highway, hard surface
- Light duty road, principal street, hard or improved surface
- Other road or street, wall
- Route marker: Interstate, U. S. State
- Railroad: standard gauge, narrow gauge
- Bridge: overpass, underpass
- Tunnel: road, railroad
- Built up area, locality, elevation
- Airport: landing field, landing strip
- National boundary
- County boundary
- National or State reservation boundary
- Land grant boundary
- U. S. public lands survey: range, township, section
- Range, township, section line: protracted
- Power transmission line, pipeline
- Dam, dam with lock
- Cemetery, building
- Windmill, water well, spring
- Mine shaft, adit or cave, mine, quarry, gravel pit
- Campground, picnic area, U. S. location monument
- Ruins, cliff dwelling
- Distorted surface: strip mine, lava, sand
- Contours: index, intermediate, supplementary
- Bathymetric contours: index, intermediate
- Stream, lake, perennial, intermittent
- Rapids, large and small; falls, large and small
- Area to be submerged: marsh, swamp
- Land subject to controlled inundation; woodland
- Swamp, mangrove
- Orchard; vineyard

A pamphlet describing topographic maps is available on request

COOS BAY, OREGON

43124-A1-TB-100

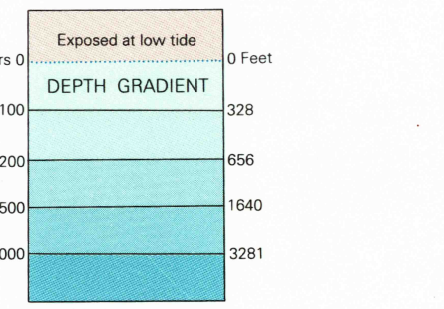
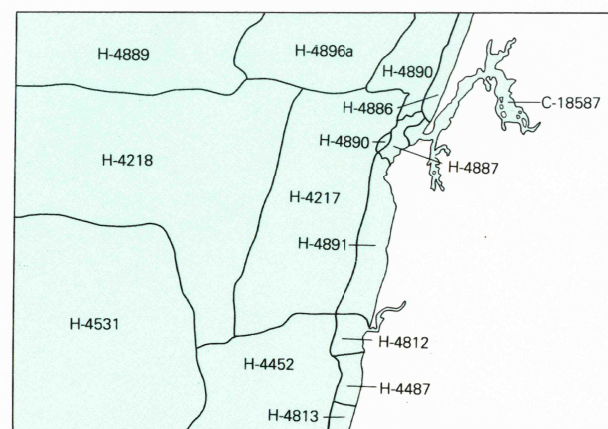
1993

HYDROGRAPHIC SURVEY INFORMATION

SURVEY NUMBER	SURVEY DATE	SURVEY SCALE	SURVEY LINE SPACING (NAUT. MILES)
H-4217	1922	1:40,000	15-45
H-4218	1922	1:120,000	40-150
H-4452	1924	1:40,000	20-40
H-4457	1925	1:20,000	20-30
H-4412	1928	1:10,000	20-50
H-4531	1928	1:20,000	20-25
H-4586	1928	1:20,000	20-25
H-4587	1928	1:10,000	20-25
H-4589	1928	1:20,000	20-40
H-4590	1928	1:40,000	20-40
H-4591	1928	1:20,000	10-25
H-4596a	1928	1:60,000	10-14

NOS CHART 18887 March 1984 1:20,000

HYDROGRAPHIC SURVEY INDEX



Photographic copies of the above and prior surveys may be obtained, at the cost of reproduction, by addressing the Director, NSICG, National Ocean Service, National Oceanic and Atmospheric Administration, Rockville, Maryland 20852