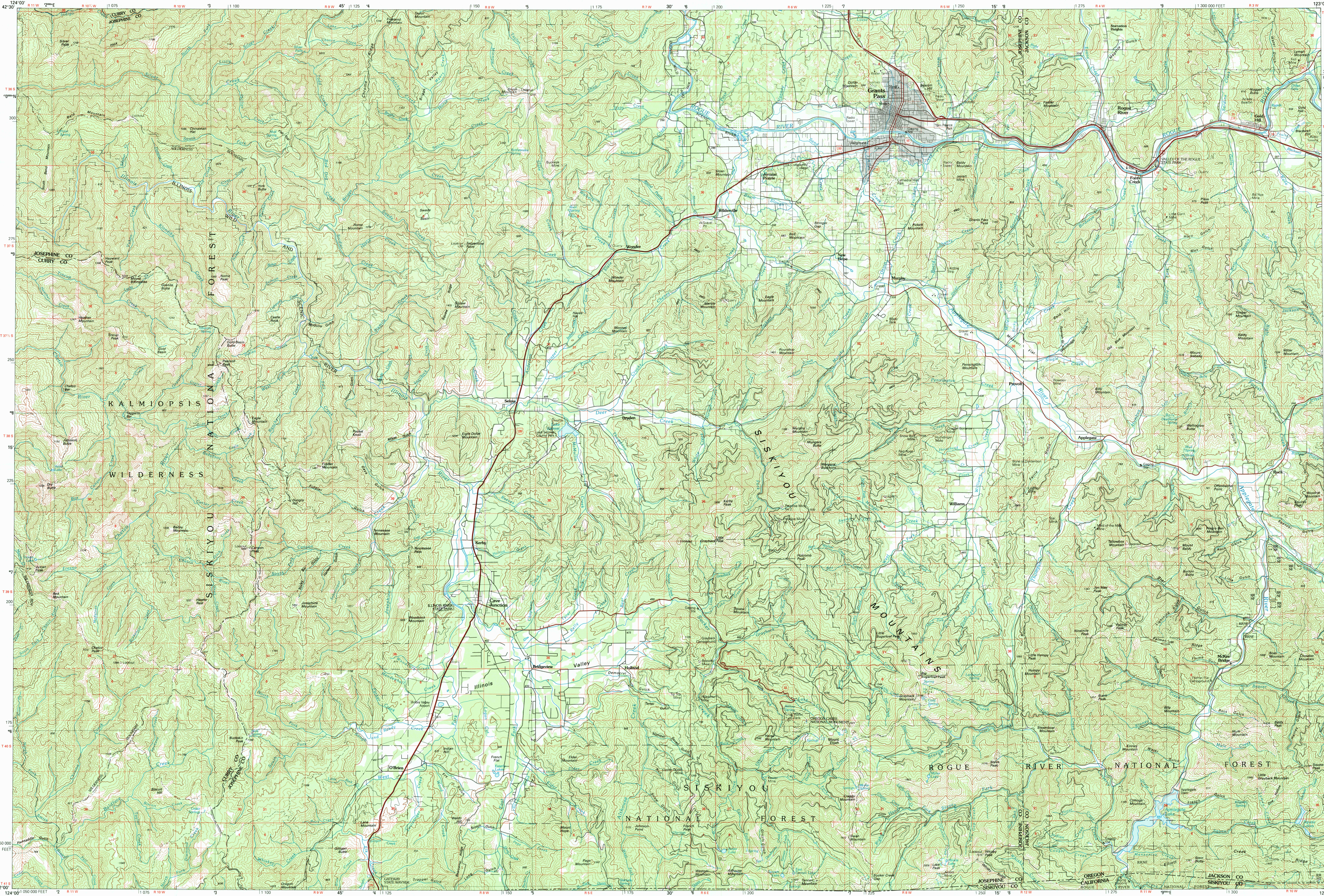


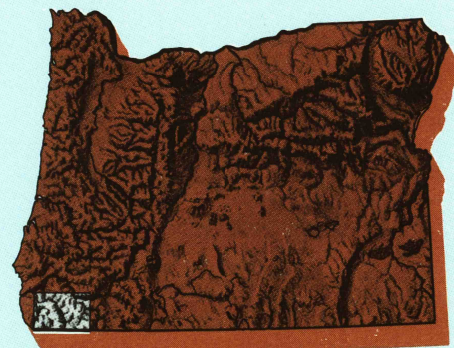
GRANTS PASS, OREGON-CALIFORNIA

30X60 MINUTE SERIES (TOPOGRAPHIC)



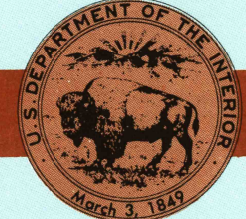
Grants Pass
OREGON-CALIFORNIA

1:100 000-scale *metric*
topographic map



30 X 60 MINUTE QUADRANGLE
SHOWING

- Contours and elevations in meters
- Highways, roads and other manmade structures
- Water features
- Woodland areas
- Geographic names



GEOLOGICAL SURVEY

1989

Produced by the United States Geological Survey

Compiled from USGS 1:24 000 and 1:62 500-scale topographic maps dated 1954-57. Planimetry revised from aerial photographs taken 1982 and other source data. Revised information not field checked. Map edited 1989.

Projection and 10 000-meter grid, zone 10
Universal Transverse Mercator
25 000-foot grid ticks based on Oregon coordinate system, south zone. 1927 North American Datum
To place on the predicted North American Datum 1983 move the projection lines 21 meters north and 96 meters east
There may be private inholdings within the boundaries of the National or State reservations shown on this map
Certain land lines are omitted because of insufficient data

CONTOUR INTERVAL 50 METERS
NATIONAL GEODETIC VERTICAL DATUM OF 1929
ELEVATIONS SHOWN TO THE NEAREST METER

THIS MAP COMPLIES WITH NATIONAL MAP ACCURACY STANDARDS

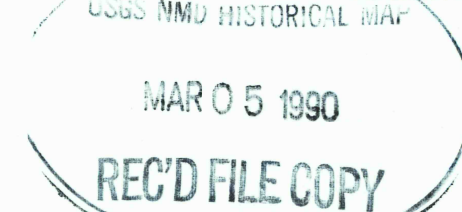
| CONVERSION TABLE | | DECLINATION DIAGRAM | ADJOINING MAPS | | | |
|------------------|---------|---------------------|----------------|---|---|--|
| Meters | Feet | | 1 | 2 | 3 | |
| 1 | 3.2808 | | 1 | 2 | 3 | |
| 2 | 6.5616 | | 4 | 5 | 6 | |
| 3 | 9.8424 | | 7 | 8 | | |
| 4 | 13.1232 | | | | | |
| 5 | 16.4040 | | | | | |
| 6 | 19.6848 | | | | | |
| 7 | 22.9656 | | | | | |
| 8 | 26.2464 | | | | | |
| 9 | 29.5272 | | | | | |
| 10 | 32.8080 | | | | | |

To convert meters to feet multiply by 3.2808
To convert feet to meters multiply by 0.3048

UTM grid convergence (GN) and 1983 magnetic declination (MN) at center of map
Diagram is approximate

1 Port Orford
2 Cannonville
3 Crater Lake
4 Cold Beach
5 Medford
6 Crescent City
7 Happy Camp
8 Yreka

FOR SALE BY U.S. GEOLOGICAL SURVEY, DENVER, COLORADO 80225
OR RESTON, VIRGINIA 22092



Topographic Map Symbols

| | |
|---|--|
| Primary highway, hard surface | |
| Secondary highway, hard surface | |
| Light duty road, principal street, hard or improved surface | |
| Other road or street, trail | |
| Route marker: Interstate, U.S., State | |
| Railroad: standard gage; narrow gage | |
| Bridge, overpass, underpass | |
| Tunnel: road; railroad | |
| Built up area, locality, elevation | |
| Airport, landing field, landing strip | |
| National boundary | |
| State boundary | |
| County boundary | |
| National or State reservation boundary | |
| Land grant boundary | |
| U.S. public lands survey: range, township, section | |
| Range, township, section line, uncontracted | |
| Power transmission line; pipeline | |
| Dam; dam with lock | |
| Cemetery; building | |
| Windmill; water well; spring | |
| Mine shaft; adit or cave; mine, quarry, gravel pit | |
| Compass rose; picnic area; U.S. location monument | |
| Ruin; cliff dwelling | |
| Distorted surface: strip mine, lava, sand | |
| Contours: index; intermediate; supplementary | |
| Bathymetric contours: index; intermediate | |
| Stream, lake: perennial; intermittent | |
| Rapids, large and small; falls, large and small | |
| Area to be submerged; marsh, swamp | |
| Land subject to controlled inundation; woodland | |
| Scrub; mangrove | |
| Orchard; vineyard | |

A pamphlet describing topographic maps is available on request

GRANTS PASS, OREGON-CALIFORNIA

42123-A1-TM-100

1989