

Compiled from USGS 1:24 000-scale topographic maps dated 1967-1971. Planimetry revised from aerial photographs taken 1980, and other source data. Revised information not field checked. Map edited 1983

Projection and 10 000-meter grid, zone 12.  
Universal Transverse Mercator  
25 000-foot grid ticks based on Arizona coordinate system, east and central zones  
1927 North American Datum

To place on the predicted North American Datum 1983  
move the projection lines 3 meters north and 62 meters east

There may be private inholdings within the boundaries of the National or State reservations shown on this map

CONTOUR INTERVAL 50 METERS  
NATIONAL GEODETIC VERTICAL DATUM OF 1929

THIS MAP COMPLIES WITH NATIONAL MAP ACCURACY STANDARDS

FOR SALE BY U.S. GEOLOGICAL SURVEY,  
P.O. BOX 25286, DENVER, COLORADO, 80225

CONVERSION TABLE		DECLINATION DIAGRAM		ADJOINING MAPS			
Meters	Ft			1	2	3	
1	3,280.8			4			5
2	6,561.7			6	7	8	
3	9,842.5			<ul style="list-style-type: none"> <li>1 Glen Canyon Dam</li> <li>2 Kayenta</li> <li>3 Rock Point</li> <li>4 Tuba City</li> <li>5 Canyon de Chelly</li> <li>6 Cameron</li> <li>7 Polacca</li> <li>8 Ganado</li> </ul>			
4	13,123.4						
5	16,404.2						
6	19,685.0						
7	22,965.9						
8	26,246.7						
9	29,527.6						
10	32,808.4						
To convert meters to feet multiply by 3.2808							
To convert feet to meters multiply by 0.3048							

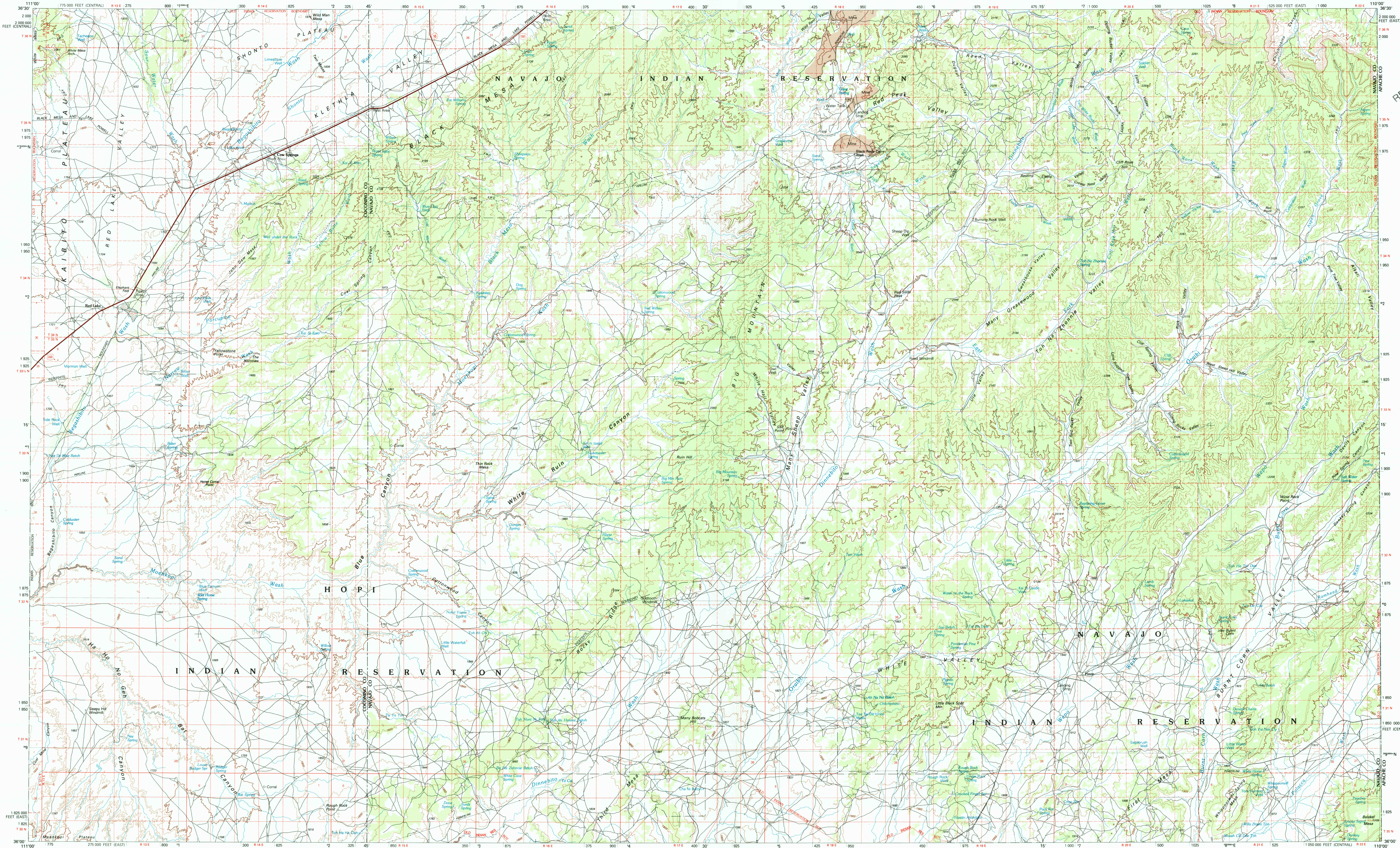
ISBN 0-607-07464-7



9 780607 074642

Primary highway, hard surface	
Secondary highway, hard surface	
Light duty road, principal street, hard or improved surface	
Other road or street	
Roundabout: Interstate, U.S. State	
Railroad: standard gage; narrow gage	
Gravel; overpass; underpass	
Standard road; railroad	
Built up area; landing, elevation	
Airport, local field, landing strip	
National boundary	
State boundary	
County boundary	
National or State reservation boundary	
Land grant boundary	
U.S. public lands: range, township; section	
Roadway, township; section line: protected	
Power transmission line; pipeline	
Dam; dam with lock	
Cemetery; building	
Windmill; water well; spring	
Water: shelf; soft or silt; mine; quarry; gravel pit	
Campground, picnic area; U.S. location monument	
Ruin; old dwelling	
Distorted surface: strip mine, land	
Stream: index; intermediate; supplementary	
Hydrographic contour: index; intermediate	
Contour line: perennial; intermittent	
Rapids, large and small; falls, large and small	
Area to be submerged; marsh, swamp	
Land subject to controlled inundation; woodland	
Forest	
Archipel; vineyard	

A pamphlet describing topographic maps is available on request.



SCALE 1:100 000

CONTOUR INTERVAL 50 METERS

## PINON, ARIZONA

N3600—W11000/30X60  
1982

1983