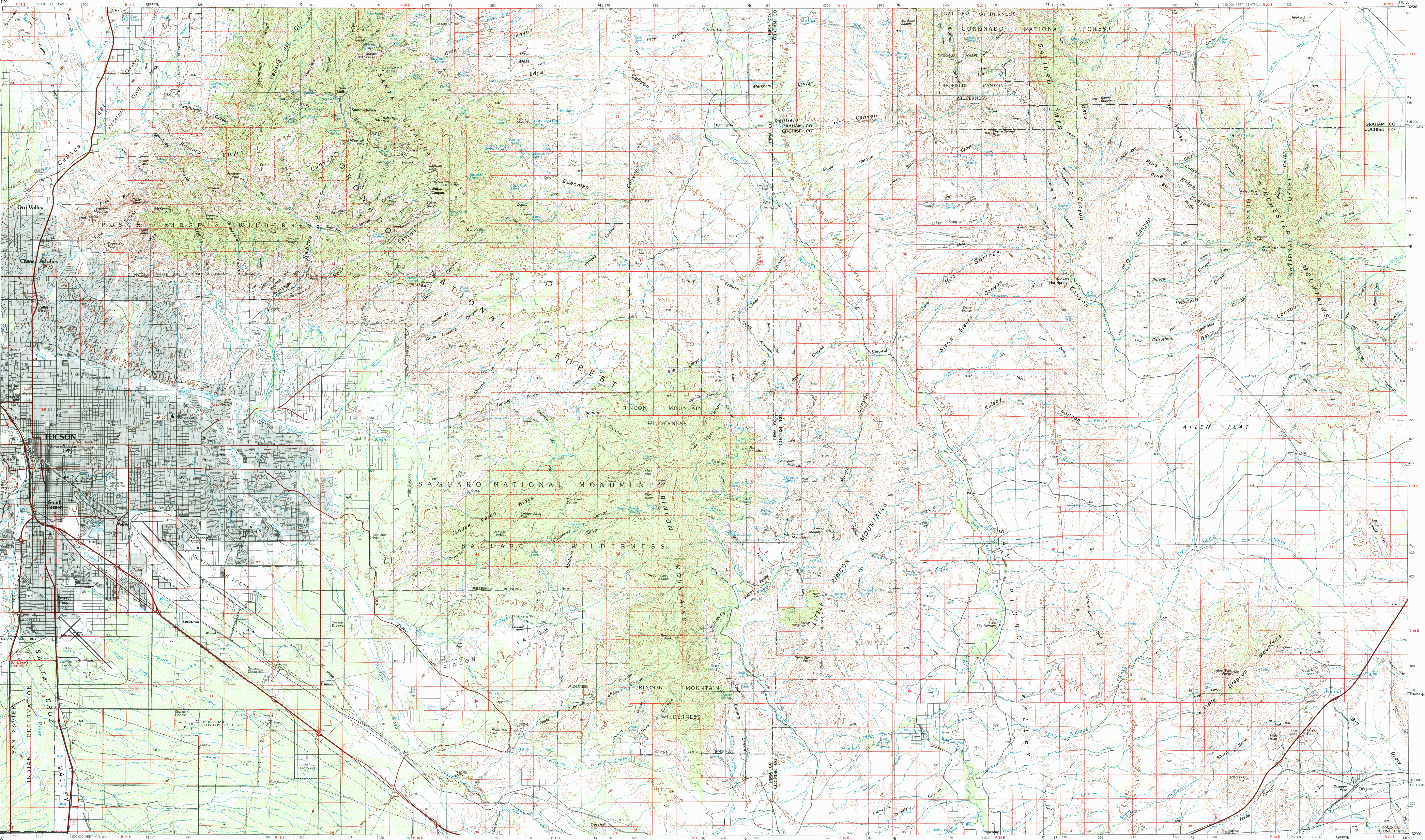


TUCSON, ARIZONA

30X60 MINUTE SERIES (TOPOGRAPHIC)



Tucson
ARIZONA

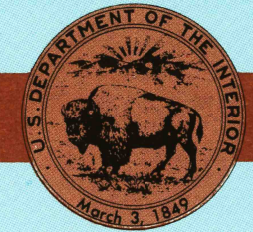
1:100 000-scale metric
topographic map

RECEIVED
MAR 31 2000

USGS NAD
HISTORICAL MAP ARCHIVE

30 X 60 MINUTE QUADRANGLE
SHOWING

- Contours and elevations in meters
- Highways, roads and other manmade structures
- Water features
- Woodland areas
- Geographic names



GEOLOGICAL SURVEY

1994

Produced by the United States Geological Survey

Compiled from USGS 1:24 000-scale topographic maps dated 1973-1985. Planimetry revised from aerial photographs taken 1992 and other source data. Revised information not field-checked. Map edited 1994.

North American Datum of 1927 (NAD 27). Projection and 10 000-meter grid: Universal Transverse Mercator, zone 12. 25 000-foot ticks: Arizona coordinate system, central and east zones. The values of the shift between NAD 27 and North American Datum of 1983 (NAD 83) for 7.5-minute intersections are obtainable from National Geodetic Survey NADCON software.

There may be private inholdings within the boundaries of the National or State reservations shown on this map.

CONTOUR INTERVAL 50 METERS
NATIONAL GEODETIC VERTICAL DATUM OF 1929
ELEVATIONS SHOWN TO THE NEAREST METER

THIS MAP COMPLIES WITH NATIONAL MAP ACCURACY STANDARDS

FOR SALE BY U.S. GEOLOGICAL SURVEY,
P.O. BOX 25286, DENVER, COLORADO, 80225

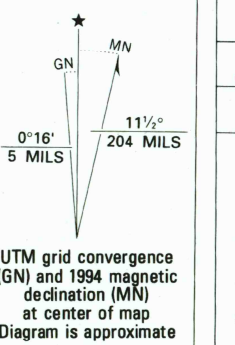
CONVERSION TABLE

Meters	Feet
2	6.5617
4	13.1234
6	19.6850
8	26.2467
10	32.8084

To convert meters to feet
multiply by 3.2808

To convert feet to meters
multiply by 0.3048

DECLINATION DIAGRAM



UTM grid convergence
(600 and 1000 meters)
declination (MM)
at center of map.
Diagram is approximate.

ADJOINING MAPS

1	2	3
4	5	
6	7	8

- Casa Grande
- Marathon
- Safford
- Sierra Vista
- Wilcox
- Yuma
- Fort Huachuca
- Chiricahua Peak



Topographic Map Symbols

- Primary highway, hard surface
- Secondary highway, hard surface
- Light duty road, principal street, hard or improved surface
- Other road or street, trail
- Route marker: Interstate, U. S., State
- Railroad: standard gauge, narrow gauge
- Bridge, overpass, underpass
- Tunnel: road, railroad
- Built up areas: locality, elevation
- Airport, landing field, landing strip
- National boundary
- County boundary
- National or State reservation boundary
- Land grant boundary
- Range, county, section line: protected
- Power transmission line, pipeline
- Dam, dam with lock
- Cemetery: building
- Windmill, water well, spring
- Mine shaft: soft or ore, mine, quarry, gravel pit
- Campground, picnic area, U. S. location monument
- Ruins, cliff dwelling
- Distorted surface: strip mine, lava, sand
- Contours: index, intermediate, supplementary
- Bottomlands: contour, index, intermediate
- Stream, lake, perennial, intermittent
- Rapids, large and small, falls, large and small
- Area to be submerged, marsh, swamp
- Land subject to controlled inundation, woodland
- Sand, meadow
- Orchard, vineyard

A pamphlet describing topographic maps is available on request

